

KellyDown Tips

Periodic tips to help you use KellyDown more effectively

Running KellyDown on Windows 10 computers

Here is a list of problems that some people have experienced when running KellyDown on the Windows 10 operating system. All issues have something to do with the screen display settings and are very easy to resolve.



Problem: A few people have commented on the fact that text on many of the forms in KellyDown does not fit inside the dialog when running under Windows 10. In some cases the **OK** and **Cancel** buttons are either half hidden or not visible at all on the form. In spreadsheet modules, the column headers do not fit within the width of the column and some numbers are clipped.



	Target Name	Inclination (°)	Azimuth (°)	Vertical Depth (m)	Northings (m)	Eastings (m)
1	AA16 LP (1)	82.747	131.739	453.14	6,789,205.2	572,633.12 E
2	AA16 LP (2)	90.000	85.000	486.60	6,789,090.2	572,958.02 E
3	AA16 LP	90.000	85.000	486.60	6,789,115.5	573,012.40 E

No.	Measured Depth (m)	Course Length (m)	Inclination (°)	Azimuth (°)	Vertical Depth (m)	Northings (m)	Eastings (m)	Dogleg Rate (°/30m)	Toolface (°)
1	0.00		0.000	0.000	0.00	789,330.21 N	572,493.04 E		
2	240.00	240.00	0.000	0.000	240.00	789,330.21 N	572,493.04 E	0.000	0.000
3	550.30	310.30	82.747	131.739	453.14	789,205.23 N	572,633.12 E	8.000	131.739
4	673.28	122.98	82.747	131.739	468.67	789,124.01 N	572,724.15 E	0.000	0.000
5	924.29	251.01	90.000	85.000	486.60	789,090.24 N	572,958.02 E	8.000	-86.893
6T	984.29	60.00	90.000	85.000	486.60	789,115.59 N	573,012.40 E	0.000	0.000
7T	1,784.29	800.00	90.000	85.000	486.60	789,453.69 N	573,737.45 E	0.000	0.000
8	1,794.29	10.00	90.000	85.000	486.60	789,457.92 N	573,746.51 E	0.000	0.000

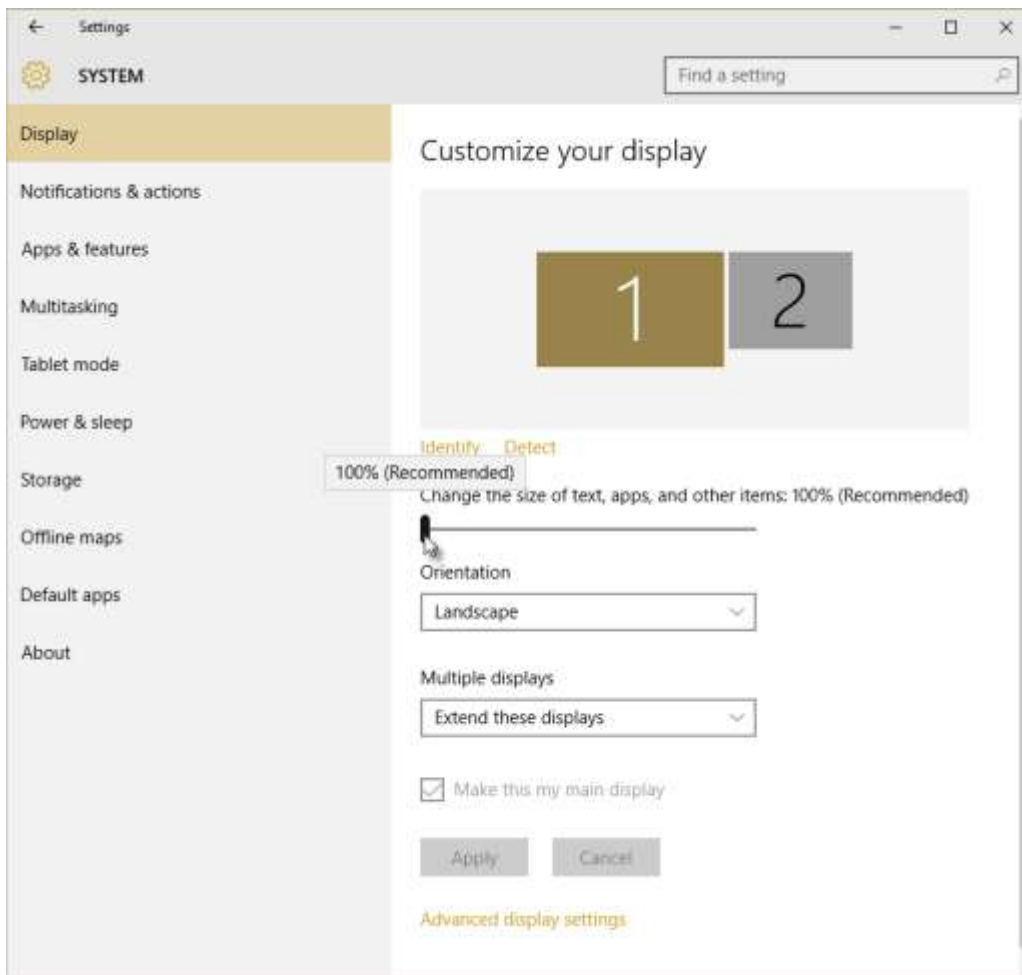
Cause: KellyDown is designed to Microsoft Windows specifications and rather than hard-code colours or allow custom configurations for the user interface, it relies on the **Windows Display Settings**. One

consequence of this however is that it is also affected by the Windows font size, which may be changed by the user if he or she has selected a theme in which the fonts are larger than the default size or in some instances, the font size is changed by the Windows operating system itself.

Solution: Under Windows 10, it is very simple to change the font size; simply right click on the Windows Desktop and select **Display Settings**.



Then change the **Font Size** to **100% (Recommended)** by sliding the cursor all the way to the left.



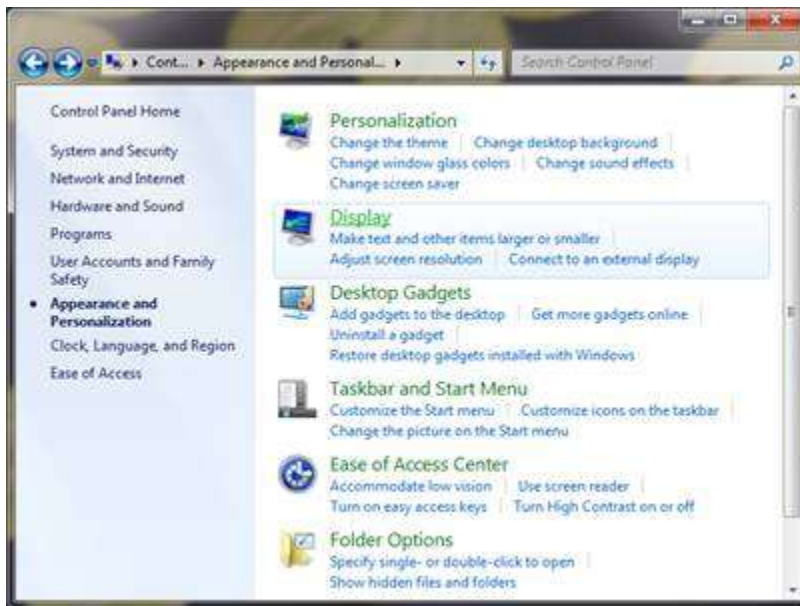
Under earlier versions of Windows, select the **Windows Control Panel** by clicking on the Windows **Start** button and selecting **Control Panel**.



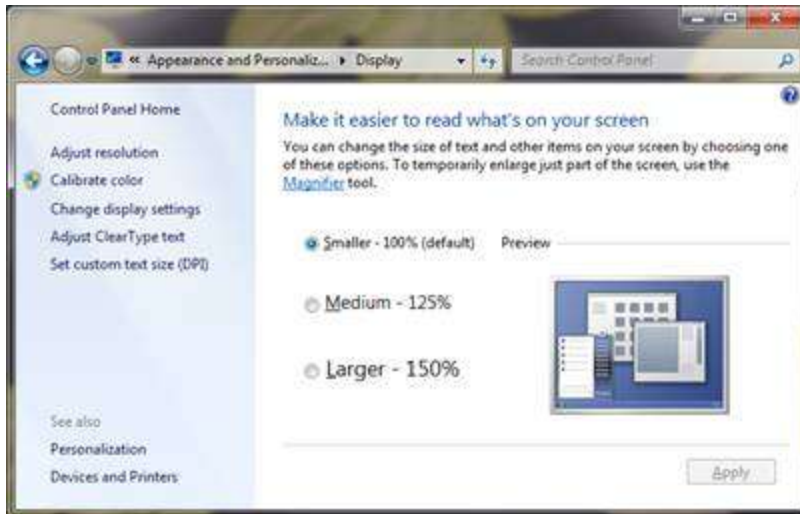
In the **Control Panel**, click on the **Appearance and Personalization** link.



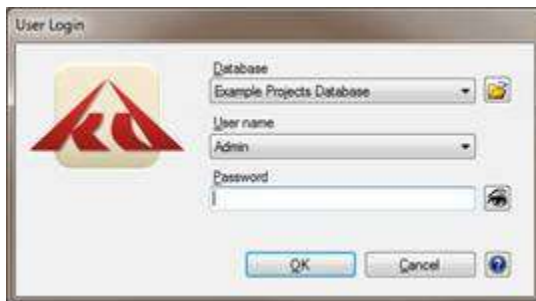
In the **Appearance and Personalization** window, click on the **Display** link.



Set the **Text Size to Smaller - 100% (default)** and click on the **Apply** button. You may have to log out of and back into Windows to affect the changes.



The KellyDown **User Login** screen should then look like this...



If you have a question you would like answered in KellyDown Tips, reply to this email with your question.
If you would like anything added to KellyDown to make it more useful or user friendly, reply to this email with your requests.
You can download the latest version of KellyDown from www.kellydown.ca
If you would like to be removed from this email distribution list, reply with "Unsubscribe" in the subject line.
