



**Anglian Oil Company Ltd.  
Northern Lights  
AA Pad  
AA16, Slot #09  
MWD Run #4**

**Job No. AB-CD-12345678  
Survey Date: January 11, 2013**

**True North Directional Services Inc.  
End of Well Report**

**May 31, 2017**  
Job No. AB-CD-12345678



**End of Well Report for AA Pad, AA16**

|                                       |  |                                |  |
|---------------------------------------|--|--------------------------------|--|
| Job Number:<br>AB-CD-12345678         | Region:<br>Northwest Territories, Canada | Lease/Block:<br>07654321       | Company Rep. #1:<br>Henry Samuel Quelch        |
| Customer:<br>Anglian Oil Company Ltd. | Field:<br>Northern Lights                | UWI No.:                       | Company Rep. #2:<br>Eusebius Twigg             |
| Well Name:<br>AA16                    | Project:<br>Northern Lights              | Start Date:<br>January 1, 2015 | Geologist:<br>Algernon Jasper Capper           |
| Rig Name:<br>Northern Skies III       | Structure:<br>AA Pad                     | End Date:<br>January 4, 2015   | Directional Supervisor:<br>Herbert Henry Locke |

**Personnel Summary**

| Directional Drillers |            |            |      | MWD Operators           |            |            |      | Gyro Surveyors       |            |            |      |
|----------------------|------------|------------|------|-------------------------|------------|------------|------|----------------------|------------|------------|------|
| Name                 | Start Date | End Date   | Days | Name                    | Start Date | End Date   | Days | Name                 | Start Date | End Date   | Days |
| Robert Cherry        | 01/01/2015 | 12/01/2015 | 12   | Herbert Henry Locke     | 01/01/2015 | 08/01/2015 | 8    | Herbert Vernon-Smith | 03/01/2015 | 12/01/2015 | 10   |
| Frank Nugent         | 12/01/2015 | 12/01/2015 | 1    | Hurree Janset Ram Singh | 01/01/2015 | 04/01/2015 | 4    |                      |            |            |      |
|                      |            |            |      | Hurree Janset Ram Singh | 09/01/2015 | 12/01/2015 | 4    |                      |            |            |      |
|                      |            |            |      | Herbert Henry Locke     | 13/01/2015 | 20/01/2015 | 8    |                      |            |            |      |

**Drilling Summary**

|                                   |                                  |                                 |                                |
|-----------------------------------|----------------------------------|---------------------------------|--------------------------------|
| Start Depth:<br>0.00m             | End Depth:<br>1,655.78m          | Below Rotary Hours:<br>72.88hrs | Circulating Hours:<br>54.22hrs |
| Total Depth Drilled:<br>1,655.78m | Total Drilled Hours:<br>54.22hrs | Ave. Total ROP:<br>30.54m/hr    | Percent Drilling:<br>74.39%    |
| Total Rotating:<br>851.78m        | Rotating Hours:<br>26.85hrs      | Ave. Rotating ROP:<br>31.72m/hr | Percent Rotating:<br>49.53%    |
| Total Sliding:<br>804.00m         | Sliding Hours:<br>27.37hrs       | Ave. Sliding ROP:<br>29.38m/hr  | Percent Sliding:<br>50.47%     |

**Pump Details**

| # | Model           | Liner Size (mm) | Liner Rating (%) | Volume Efficiency (%) | Vol. per Stroke (m³) | Maximum Pressure (kPa) | Maximum Flow (m³/min) |
|---|-----------------|-----------------|------------------|-----------------------|----------------------|------------------------|-----------------------|
| 1 | National N-1000 | 140             | 100.00           | 100.00                | 0.02                 | 27,200                 | 1.72                  |
| 2 | National N-1300 | 152             | 100.00           | 100.00                | 0.03                 | 29,647                 | 2.05                  |
| 3 | National N-1600 | 152             | 100.00           | 100.00                | 0.02                 | 37,507                 | 2.00                  |

**Drilling Parameters - MWD Run #1**

|                        | Min   | Max   |                       | Min   | Max   |
|------------------------|-------|-------|-----------------------|-------|-------|
| WOB (N):               | 15    | 16    | SPP Off Bottom (kPa): | 5,000 | 5,098 |
| Pick Up (N):           | 35    | 40    | SPP On Bottom (kPa):  | 5,022 | 5,160 |
| Slack Off (N):         | 35    | 39    | Delta Pressure (kPa): | 301   | 348   |
| Rot. Off Bottom (N):   | 34    | 39    | Flow Rate (m³/min):   | 2.52  | 3.00  |
| Bottom Hole Temp (°C): | 101.1 | 102.9 | Pump Rate (SPM):      | 15    | 20    |
| Rotary Speed (RPM):    | 29    | 38    | Motor Speed (RPM):    | 38    | 48    |
| Surface Torque (N-m):  | 3,029 | 3,473 |                       |       |       |

**Bit Record - MWD Run #1**

|   |                        |                            |
|---|------------------------|----------------------------|
| Bit Number:<br>1  | Description:           |                            |
| Manufacturer:<br>GoodEnough                             | TFA:<br>542.0mm²       | Jets:<br>3 x 10.3/3 x 11.1 |
| Model:<br>GE717 Revel                                   | Bit Diameter:<br>200mm | Bit Hours:<br>10.61Hrs.    |
| Type:<br>PDC  | IADC#:                 | Bit Footage:<br>320.09m    |
| Serial Number:<br>92873402182                           | Condition:<br>Good     |                            |
| Reason for pulling out of hole:<br>Reached Casing Depth |                        |                            |

**Drillstring Components - MWD Run #1 (BHA #1)**

| Item # | Description                     | Vendor       | Serial No. | Outside Diameter (mm) | Inside Diameter (mm) | Fishing Neck OD (mm) | Fishing Neck Length (m) | Top Connection | Length (m) | Total Length (m) |
|--------|---------------------------------|--------------|------------|-----------------------|----------------------|----------------------|-------------------------|----------------|------------|------------------|
| 1      | 12 1/4" Bit                     | GoodEnough   | 213651     | 311                   | 83                   | 0                    | 0.00                    |                | 0.46       | 0.46             |
| 2      | 6 3/4" Motor Lobe 6:7 - 5.0 stg | Cholmondeley | 753443     | 171                   | 86                   | 0                    | 0.00                    |                | 8.56       | 9.02             |
| 3      | Stabilizer                      | Jackson      | 872634     | 205                   | 73                   | 0                    | 0.00                    |                | 1.65       | 10.66            |
| 4      | Bottle Neck X/O Float Sub       |              |            | 203                   | 75                   | 0                    | 0.00                    |                | 0.69       | 11.36            |
| 5      | UBHO Sub                        |              |            | 165                   | 75                   | 0                    | 0.00                    |                | 1.02       | 12.38            |
| 6      | 6 3/4" Non Mag Drill Collar     |              |            | 171                   | 73                   | 0                    | 0.00                    |                | 9.40       | 21.78            |
| 7      | 6 5/8" Shock Sub                |              |            | 168                   | 51                   | 0                    | 0.00                    |                | 3.55       | 25.33            |
| 8      | 6 3/4" DC - 105.00 lb/ft        |              |            | 171                   | 64                   | 0                    | 0.00                    |                | 0.30       | 25.63            |
| 9      | 4" DP (E) H90 - 15.70 lb/ft     |              |            | 102                   | 82                   | 0                    | 0.00                    |                | 294.45     | 320.09           |

**Drilling Parameters - MWD Run #2**

|                        | Min   | Max   |                       | Min   | Max   |
|------------------------|-------|-------|-----------------------|-------|-------|
| WOB (N):               | 15    | 16    | SPP Off Bottom (kPa): | 5,005 | 5,099 |
| Pick Up (N):           | 35    | 40    | SPP On Bottom (kPa):  | 5,025 | 5,195 |
| Slack Off (N):         | 34    | 40    | Delta Pressure (kPa): | 300   | 350   |
| Rot. Off Bottom (N):   | 34    | 39    | Flow Rate (m³/min):   | 2.51  | 2.99  |
| Bottom Hole Temp (°C): | 101.3 | 109.7 | Pump Rate (SPM):      | 15    | 20    |
| Rotary Speed (RPM):    | 29    | 38    | Motor Speed (RPM):    | 39    | 48    |
| Surface Torque (N-m):  | 3,015 | 3,492 |                       |       |       |

**Bit Record - MWD Run #2**

|   |                        |                         |
|---|------------------------|-------------------------|
| Bit Number:<br>2  | Description:           |                         |
| Manufacturer:<br>GoodEnough                             | TFA:<br>418.1mm²       | Jets:<br>6 x 14.3       |
| Model:<br>GE516UR                                       | Bit Diameter:<br>222mm | Bit Hours:<br>15.45Hrs. |
| Type:<br>PDC  | IADC#:<br>19028743     | Bit Footage:<br>482.93m |
| Serial Number:<br>9873249                               | Condition:<br>Good     |                         |
| Reason for pulling out of hole:<br>Reached Casing Depth |                        |                         |

**End of Well Report for AA Pad, AA16**

| Drillstring Components - MWD Run #2 (BHA #2) |                                 |              |            |                       |                      |                      |                         |                |            |                  |
|--|---------------------------------|--------------|------------|-----------------------|----------------------|----------------------|-------------------------|----------------|------------|------------------|
| Item #                                       | Description                     | Vendor       | Serial No. | Outside Diameter (mm) | Inside Diameter (mm) | Fishing Neck OD (mm) | Fishing Neck Length (m) | Top Connection | Length (m) | Total Length (m) |
| 1  | 8 3/4" Bit                      | GoodEnough   | 213652     | 222                   | 76                   | 0                    | 0.00                    |                | 0.30       | 0.30             |
| 2  | 6 3/4" Motor Lobe 7:8 - 6.0 stg | Cholmondeley | 753442     | 171                   | 86                   | 0                    | 0.00                    |                | 10.94      | 11.24            |
| 3  | Stabilizer                      | Jackson      | 872634     | 205                   | 73                   | 0                    | 0.00                    |                | 1.65       | 12.89            |
| 4  | 6 9/16" Stabilizer              | Nortrac      | 0987234    | 167                   | 73                   | 0                    | 0.00                    |                | 1.56       | 14.44            |
| 5  | 6 3/4" Float Sub                |              |            | 171                   | 73                   | 0                    | 0.00                    |                | 0.51       | 14.95            |
| 6  | 6 1/2" UBHO Sub                 |              |            | 165                   | 75                   | 0                    | 0.00                    |                | 1.09       | 16.04            |
| 7  | 6 3/4" Non Mag Drill Collar     |              |            | 171                   | 73                   | 0                    | 0.00                    |                | 9.40       | 25.44            |
| 8  | 6 1/2" Non Mag Flex Collar      |              |            | 165                   | 83                   | 0                    | 0.00                    |                | 9.26       | 34.70            |
| 9  | 6 3/4" DC - 105.00 lb/ft        |              |            | 171                   | 64                   | 0                    | 0.00                    |                | 0.30       | 35.00            |
| 10   | 4" DP (E) H90 - 15.70 lb/ft     |              |            | 102                   | 82                   | 0                    | 0.00                    |                | 752.02     | 787.02           |

| Drilling Parameters - MWD Run #3 |       |       |                                  |       |       |
|----------------------------------|-------|-------|----------------------------------|-------|-------|
|                                  | Min   | Max   |                                  | Min   | Max   |
| WOB (N):                         | 15    | 16    | SPP Off Bottom (kPa):            | 5,003 | 5,100 |
| Pick Up (N):                     | 36    | 40    | SPP On Bottom (kPa):             | 5,016 | 5,186 |
| Slack Off (N):                   | 35    | 40    | Delta Pressure: (kPa):           | 302   | 348   |
| Rot. Off Bottom (N):             | 35    | 40    | Flow Rate (m <sup>3</sup> /min): | 2.51  | 2.98  |
| Bottom Hole Temp (°C):           | 101.7 | 109.9 | Pump Rate (SPM):                 | 15    | 20    |
| Rotary Speed (RPM):              | 29    | 38    | Motor Speed (RPM):               | 38    | 48    |
| Surface Torque (N-m):            | 3,001 | 3,483 |                                  |       |       |

| Bit Record - MWD Run #3         |                      |              |
|---------------------------------|----------------------|--------------|
| Bit Number:                     | Description:         |              |
| 3                               |                      |              |
| Manufacturer:                   | TFA:                 | Jets:        |
| GoodEnough                      | 962.0mm <sup>2</sup> | 6 x 14.3     |
| Model:                          | Bit Diameter:        | Bit Hours:   |
| GE626 Revel                     | 200mm                | 13.71Hrs.    |
| Type:                           | IADC#:               | Bit Footage: |
| PDC                             |                      | 430.13m      |
| Serial Number:                  | Condition:           |              |
| 90827349712                     | Good                 |              |
| Reason for pulling out of hole: |                      |              |
| Reached Casing Depth            |                      |              |

| Drillstring Components - MWD Run #3 (BHA #3) |                                  |            |            |                       |                      |                      |                         |                |            |                  |
|--|----------------------------------|------------|------------|-----------------------|----------------------|----------------------|-------------------------|----------------|------------|------------------|
| Item #                                       | Description                      | Vendor     | Serial No. | Outside Diameter (mm) | Inside Diameter (mm) | Fishing Neck OD (mm) | Fishing Neck Length (m) | Top Connection | Length (m) | Total Length (m) |
| 1  | 6" PDC Bit                       |            |            | 152                   | 57                   | 0                    | 0.00                    |                | 0.22       | 0.22             |
| 2  | 4 3/4" Motor Lobe 4:5 - 6.3 stg  | GoodEnough | 87623916   | 121                   | 57                   | 0                    | 0.00                    |                | 7.73       | 7.95             |
| 3  | Float Sub                        |            |            | 123                   | 50                   | 0                    | 0.00                    |                | 1.16       | 9.11             |
| 4  | Float Sub                        |            |            | 123                   | 50                   | 0                    | 0.00                    |                | 1.17       | 10.28            |
| 5  | 4 3/4" MWD                       |            |            | 121                   | 72                   | 0                    | 0.00                    |                | 20.29      | 30.57            |
| 6  | 4 3/4" DC - 44.00 lb/ft          |            |            | 121                   | 64                   | 0                    | 0.00                    |                | 18.86      | 49.43            |
| 7  | Cross Over                       |            |            | 133                   | 63                   | 0                    | 0.00                    |                | 0.58       | 50.01            |
| 8  | Mechanical Jar                   |            |            | 121                   | 57                   | 0                    | 0.00                    |                | 4.99       | 55.00            |
| 9  | Cross Over                       |            |            | 130                   | 58                   | 0                    | 0.00                    |                | 0.82       | 55.82            |
| 10   | 4" DP (X) H90 - 15.70 lb/ft      |            |            | 102                   | 82                   | 0                    | 0.00                    |                | 600.00     | 655.82           |
| 11   | 4" HWDP NC40(FH) - 29.70 lb/ft   |            |            | 102                   | 65                   | 0                    | 0.00                    |                | 800.00     | 1,455.82         |
| 12   | 4" DP (S) NC46(IF) - 15.70 lb/ft |            |            | 102                   | 82                   | 0                    | 0.00                    |                | 190.79     | 1,646.61         |

| Drilling Parameters - MWD Run #4 |       |       |                                  |       |       |
|----------------------------------|-------|-------|----------------------------------|-------|-------|
|                                  | Min   | Max   |                                  | Min   | Max   |
| WOB (N):                         | 15    | 16    | SPP Off Bottom (kPa):            | 5,001 | 5,100 |
| Pick Up (N):                     | 35    | 40    | SPP On Bottom (kPa):             | 5,017 | 5,174 |
| Slack Off (N):                   | 35    | 40    | Delta Pressure: (kPa):           | 304   | 349   |
| Rot. Off Bottom (N):             | 34    | 39    | Flow Rate (m <sup>3</sup> /min): | 2.53  | 3.00  |
| Bottom Hole Temp (°C):           | 100.4 | 109.7 | Pump Rate (SPM):                 | 15    | 20    |
| Rotary Speed (RPM):              | 29    | 38    | Motor Speed (RPM):               | 38    | 48    |
| Surface Torque (N-m):            | 3,007 | 3,495 |                                  |       |       |

| Bit Record - MWD Run #4         |                              |                        |
|---------------------------------|------------------------------|------------------------|
| Bit Number:                     | Description:                 |                        |
| 5                               | 6 5/8in PDC Bit              |                        |
| Manufacturer:                   | TFA:                         | Jets:                  |
| GoodEnuff                       | 2591.8mm <sup>2</sup>        | 2 x 10, 1 x 20, 3 x 30 |
| Model:                          | Bit Diameter:                | Bit Hours:             |
| True Blue                       | 167mm                        | 14.44Hrs.              |
| Type:                           | IADC#:                       | Bit Footage:           |
| PDC Bit                         |                              | 438.63m                |
| Serial Number:                  | Condition:                   |                        |
| 12345678                        | NO - No Dull Characteristics |                        |
| Reason for pulling out of hole: |                              |                        |
| Reached TD                      |                              |                        |

**End of Well Report for AA Pad, AA16**

| Motor Properties - MWD Run #4                   |   |                                     |                                      |                            |                             |                           |  |  |  |
|---|---|-------------------------------------|--------------------------------------|----------------------------|-----------------------------|---------------------------|--|--|--|
| Description:<br>4 3/4" Motor Lobe 4:5 - 6.3 stg | Motor Type:<br>Motor                          | Manufacturer:<br>GoodEnuff          | Model:<br>PowerPuff                  | Serial Number:<br>23456789 | Lobe/Stage:<br>4:5/6.0      |                           |  |  |  |
| Mud Type:<br>Oil Based Mud                      | Stabilizer Type:                              | Rubber Type:                        | Fit Type:                            |                            |                             |                           |  |  |  |
| Pad OD:<br>114mm                                | NB Stabilizer:<br>114                         | Bit to Bend:<br>1.22m               | Bend Angle:<br>2.00°                 | Pressure Drop:<br>6,206kPa | Rev. Rate:<br>2641.72Rev/m³ | Rotor Jet:<br>12mm        |  |  |  |
| Motor Footage:<br>438.63m                       | Below Rotary Hours:<br>22.61hrs               | Circulating Hours:<br>14.44hrs      | Rotating Footage:<br>224.63m         | Rotating Hours:<br>7.20hrs | Sliding Footage:<br>214.00m | Sliding Hours:<br>7.24hrs |  |  |  |
| Proposed Build Rate:<br>11.81°/30m              | Actual Build Rate:<br>11.81°/30m              | Date/Time In:<br>03/01/2015 8:15 AM | Date/Time Out:<br>04/01/2015 8:52 AM | Number of Stalls:<br>0     | Stall Duration:<br>0.00mins | Extended Motor:<br>No     |  |  |  |
| Motor Failed:<br>No                             | Condition:<br>Showing signs of fatigue stress |                                     |                                      |                            |                             |                           |  |  |  |

**Motor Discussion**

This is the Motor Comment

**Drillstring Components - MWD Run #4 (BHA #4)**

| Item # | Description                      | Vendor    | Serial No. | Outside Diameter (mm) | Inside Diameter (mm) | Fishing Neck OD (mm) | Fishing Neck Length (m) | Top Connection | Length (m) | Total Length (m) |
|--------|----------------------------------|-----------|------------|-----------------------|----------------------|----------------------|-------------------------|----------------|------------|------------------|
| 1      | 6 5/8in PDC Bit                  | GoodEnuff | 12345678   | 167                   | 89                   | 152                  | 0.00                    | 3 1/2 REG      | 0.35       | 0.35             |
| 2      | 4 3/4" Motor Lobe 4:5 - 6.3 stg  | GoodEnuff | 23456789   | 121                   | 60                   | 0                    | 0.00                    | 3 1/2 REG      | 7.87       | 8.22             |
| 3      | Float Sub                        |           |            | 123                   | 50                   | 0                    | 0.00                    | 3 1/2 REG      | 1.16       | 9.38             |
| 4      | Float Sub                        |           |            | 123                   | 50                   | 0                    | 0.00                    | 3 1/2 REG      | 1.17       | 10.55            |
| 5      | 4 3/4" MWD                       |           |            | 121                   | 72                   | 0                    | 0.00                    | 3 1/2 REG      | 20.29      | 30.84            |
| 6      | 4 3/4" DC - 44.00 lb/ft          |           |            | 121                   | 64                   | 0                    | 0.00                    | 3 1/2 REG      | 18.86      | 49.70            |
| 7      | Cross Over                       |           |            | 133                   | 63                   | 0                    | 0.00                    | 3 1/2 REG      | 0.58       | 50.28            |
| 8      | Mechanical Jar                   |           |            | 121                   | 57                   | 0                    | 0.00                    | 3 1/2 REG      | 4.99       | 55.27            |
| 9      | Cross Over                       |           |            | 130                   | 58                   | 0                    | 0.00                    | 2 3/8 REG      | 0.82       | 56.09            |
| 10     | 4" DP (X) H90 - 15.70 lb/ft      |           |            | 102                   | 82                   | 0                    | 0.00                    | 2 3/8 REG      | 600.00     | 656.09           |
| 11     | 4" HWD NC40(FH) - 29.70 lb/ft    |           |            | 102                   | 65                   | 0                    | 0.00                    | 2 3/8 REG      | 800.00     | 1,456.09         |
| 12     | 4" DP (S) NC46(IF) - 15.70 lb/ft |           |            | 102                   | 82                   | 0                    | 0.00                    | 2 3/8 REG      | 190.79     | 1,646.88         |

**Mud Properties**

| Date        | Time  | Bit Depth (m) | Mud Weight (kg/m³) | Yield Point (Pa) | Plastic Viscosity (Pa-s) | Funnel Viscosity (Secs) | Chlorides (ppm) | pH   | Oil (%) | Gas (%) | Sand (%) | Solids (%) | Water Line (m) | Bot.Hole Temp. (°C) | Flow Temp. (°C) |
|-------------|-------|---------------|--------------------|------------------|--------------------------|-------------------------|-----------------|------|---------|---------|----------|------------|----------------|---------------------|-----------------|
| 01 Jan 2015 | 08:17 | 63.35         | 1,598.43           | 10.21            | 0.02                     | 50                      | 101.70          | 5.59 | 0.00    | 2092.76 | 0.00     | 10.44      | 5.05           | 102.7               | 73.4            |
| 01 Jan 2015 | 11:20 | 155.35        | 1,690.83           | 10.80            | 0.02                     | 52                      | 101.68          | 5.02 | 0.00    | 2016.42 | 0.00     | 10.41      | 5.25           | 101.1               | 74.7            |
| 01 Jan 2015 | 14:25 | 246.66        | 1,649.71           | 10.46            | 0.02                     | 51                      | 108.90          | 5.67 | 0.00    | 2028.14 | 0.00     | 10.01      | 5.18           | 102.9               | 73.0            |
| 01 Jan 2015 | 22:03 | 402.89        | 1,622.53           | 10.85            | 0.02                     | 50                      | 100.55          | 5.51 | 0.00    | 2037.50 | 0.00     | 10.30      | 5.23           | 109.7               | 84.6            |
| 02 Jan 2015 | 01:08 | 493.77        | 1,652.92           | 10.40            | 0.02                     | 53                      | 100.46          | 5.45 | 0.00    | 2003.86 | 0.00     | 10.42      | 5.18           | 103.7               | 75.5            |
| 02 Jan 2015 | 04:12 | 585.30        | 1,693.18           | 11.00            | 0.02                     | 53                      | 101.75          | 5.18 | 0.00    | 2096.67 | 0.00     | 10.89      | 5.35           | 101.3               | 75.5            |
| 02 Jan 2015 | 07:12 | 676.65        | 1,634.52           | 10.69            | 0.02                     | 52                      | 108.53          | 5.99 | 0.00    | 2017.29 | 0.00     | 10.28      | 5.33           | 108.7               | 80.0            |
| 02 Jan 2015 | 10:08 | 768.58        | 1,659.78           | 10.48            | 0.02                     | 51                      | 103.40          | 5.08 | 0.00    | 2024.13 | 0.00     | 10.33      | 5.22           | 106.4               | 79.3            |
| 02 Jan 2015 | 17:53 | 869.61        | 1,667.20           | 10.68            | 0.02                     | 50                      | 105.95          | 5.23 | 0.00    | 2098.83 | 0.00     | 10.18      | 5.39           | 106.0               | 77.8            |
| 02 Jan 2015 | 20:56 | 960.92        | 1,629.31           | 10.48            | 0.02                     | 51                      | 107.46          | 5.73 | 0.00    | 2016.01 | 0.00     | 10.15      | 5.35           | 102.7               | 75.3            |
| 02 Jan 2015 | 23:53 | 1,052.37      | 1,638.25           | 10.58            | 0.02                     | 51                      | 105.37          | 5.62 | 0.00    | 2022.90 | 0.00     | 10.66      | 5.37           | 109.9               | 82.9            |
| 03 Jan 2015 | 02:48 | 1,144.09      | 1,515.96           | 10.11            | 0.02                     | 54                      | 100.80          | 5.58 | 0.00    | 2041.31 | 0.00     | 10.61      | 5.28           | 101.7               | 72.7            |
| 03 Jan 2015 | 14:18 | 1,299.22      | 1,623.61           | 10.54            | 0.02                     | 52                      | 101.71          | 5.95 | 0.00    | 2058.08 | 0.00     | 10.45      | 5.18           | 105.9               | 76.7            |
| 03 Jan 2015 | 17:07 | 1,390.76      | 1,509.98           | 10.39            | 0.02                     | 51                      | 109.24          | 5.32 | 0.00    | 2054.44 | 0.00     | 10.08      | 5.18           | 108.7               | 82.0            |
| 03 Jan 2015 | 20:15 | 1,463.55      | 1,635.90           | 10.18            | 0.02                     | 54                      | 100.44          | 5.28 | 0.00    | 2063.03 | 0.00     | 10.67      | 5.23           | 106.3               | 77.0            |
| 03 Jan 2015 | 23:09 | 1,555.23      | 1,623.14           | 10.10            | 0.02                     | 54                      | 103.61          | 5.54 | 0.00    | 2023.12 | 0.00     | 10.96      | 5.28           | 100.4               | 72.5            |
| 04 Jan 2015 | 02:12 | 1,647.48      | 1,697.60           | 10.24            | 0.02                     | 52                      | 102.22          | 5.48 | 0.00    | 2063.54 | 0.00     | 10.07      | 5.10           | 109.7               | 84.2            |

**Activity Breakdown**

| Date              | Start Time | End Time | Hours | Start Depth (m) | End Depth (m) | Course Length (m) | Rate of Penetr'n (m/hr) | Activity           | Comment |
|-------------------|------------|----------|-------|-----------------|---------------|-------------------|-------------------------|--------------------|---------|
| 01 Jan 2015       | 00:00      | 05:00    | 5.00  | 0.00            | 0.00          |                   |                         | Standby            |         |
| 01 Jan 2015       | 05:00      | 06:00    | 1.00  | 0.00            | 0.00          |                   |                         | Rig Up & Tear Down |         |
| <b>MWD Run #1</b> |            |          |       |                 |               |                   |                         |                    |         |
| 01 Jan 2015       | 06:00      | 06:30    | 0.50  | 0.00            | 0.00          |                   |                         | Tripping In        |         |
| 01 Jan 2015       | 06:30      | 17:06    | 10.61 | 0.00            | 320.09        | 320.09            | 30.17                   | Drilling           |         |
| 01 Jan 2015       | 17:06      | 18:06    | 1.00  | 320.09          | 320.09        |                   |                         | Tripping Out       |         |
| <b>MWD Run #2</b> |            |          |       |                 |               |                   |                         |                    |         |
| 01 Jan 2015       | 18:06      | 19:36    | 1.50  | 320.09          | 320.09        |                   |                         | Tripping In        |         |
| 01 Jan 2015       | 19:36      | 11:03    | 15.45 | 320.09          | 787.02        | 466.93            | 30.22                   | Drilling           |         |

**End of Well Report for AA Pad, AA16**

| Activity Breakdown |            |          |       |                 |               |                   |                         |                    |         |
|--------------------|------------|----------|-------|-----------------|---------------|-------------------|-------------------------|--------------------|---------|
| Date               | Start Time | End Time | Hours | Start Depth (m) | End Depth (m) | Course Length (m) | Rate of Penetr'n (m/hr) | Activity           | Comment |
| 02 Jan 2015        | 11:03      | 13:03    | 2.00  | 787.02          | 787.02        |                   |                         | Tripping Out       |         |
| <b>MWD Run #3</b>  |            |          |       |                 |               |                   |                         |                    |         |
| 02 Jan 2015        | 13:03      | 15:33    | 2.50  | 787.02          | 787.02        |                   |                         | Tripping In        |         |
| 02 Jan 2015        | 15:33      | 05:15    | 13.71 | 787.02          | 1,217.15      | 430.13            | 31.36                   | Drilling           |         |
| 03 Jan 2015        | 05:15      | 08:15    | 3.00  | 1,217.15        | 1,217.15      |                   |                         | Tripping Out       |         |
| <b>MWD Run #4</b>  |            |          |       |                 |               |                   |                         |                    |         |
| 03 Jan 2015        | 08:15      | 11:45    | 3.50  | 1,217.15        | 1,217.15      |                   |                         | Tripping In        |         |
| 03 Jan 2015        | 11:45      | 19:36    | 7.84  | 1,217.15        | 1,454.46      | 237.31            | 30.28                   | Drilling           |         |
| 03 Jan 2015        | 19:36      | 19:56    | 0.34  | 1,454.46        | 1,454.46      |                   |                         | Short Trip Out     |         |
| 03 Jan 2015        | 19:56      | 20:15    | 0.32  | 1,454.46        | 1,454.46      |                   |                         | Short Trip In      |         |
| 03 Jan 2015        | 20:15      | 02:52    | 6.61  | 1,454.46        | 1,655.78      | 201.32            | 30.48                   | Drilling           |         |
| 04 Jan 2015        | 02:52      | 06:52    | 4.00  | 1,655.78        | 1,655.78      |                   |                         | Tripping Out       |         |
| 04 Jan 2015        | 06:52      | 08:52    | 2.00  | 1,655.78        | 1,655.78      |                   |                         | Rig Up & Tear Down |         |

| Drilling Records  |               |            |          |       |                 |               |                   |         |            |           |                      |                                 |                 |         |         |         | *Surveys are interpolated from actual surveys |         |
|-------------------|---------------|------------|----------|-------|-----------------|---------------|-------------------|---------|------------|-----------|----------------------|---------------------------------|-----------------|---------|---------|---------|---|---------|
| Date              | Drilling Mode | Start Time | End Time | Hours | Start Depth (m) | End Depth (m) | Depth Drilled (m) | WOB (N) | ROP (m/hr) | RPM (RPM) | Surface Torque (N-m) | Flow Rate (m <sup>3</sup> /min) | Delta SPP (kPa) | TFO (°) | INC (°) | AZM (°) | DLS (°/30m)                                   | Comment |
| <b>MWD Run #1</b> |               |            |          |       |                 |               |                   |         |            |           |                      |                                 |                 |         |         |         |   |         |
| 01 Jan            | Sliding       | 06:30      | 06:43    | 0.22  | 0.00            | 5.00          | 5.00              |         | 22.67      |           |                      |                                 |                 | 30.00   | 0.17    | 98.80   | 0.43  |         |
| 01 Jan            | Rotating      | 06:43      | 06:49    | 0.11  | 5.00            | 9.11          | 4.11              | 16      | 36.55      | 29        | 3,050                | 3.00                            | 305             |         | 0.20    | 114.50  | 0.43  |         |
| 01 Jan            | Sliding       | 06:49      | 07:00    | 0.17  | 9.11            | 14.11         | 5.00              |         | 29.58      |           |                      |                                 |                 | 60.00   | 0.16    | 141.58  | 0.90  |         |
| 01 Jan            | Rotating      | 07:00      | 07:05    | 0.09  | 14.11           | 18.14         | 4.03              | 15      | 44.16      | 35        | 3,206                | 2.58                            | 314             |         | 0.14    | 189.33  | 0.90  |         |
| 01 Jan            | Sliding       | 07:05      | 07:13    | 0.13  | 18.14           | 22.14         | 4.00              |         | 30.14      |           |                      |                                 |                 | 60.00   | 0.15    | 193.58  | 0.87  |         |
| 01 Jan            | Rotating      | 07:13      | 07:24    | 0.19  | 22.14           | 27.00         | 4.86              | 15      | 25.78      | 37        | 3,314                | 2.69                            | 339             |         | 0.18    | 143.78  | 0.87  |         |
| 01 Jan            | Sliding       | 07:24      | 07:30    | 0.09  | 27.00           | 32.00         | 5.00              |         | 57.11      |           |                      |                                 |                 | 150.00  | 0.29    | 115.17  | 1.06  |         |
| 01 Jan            | Rotating      | 07:30      | 07:42    | 0.21  | 32.00           | 36.32         | 4.32              | 16      | 21.04      | 33        | 3,202                | 2.75                            | 334             |         | 0.43    | 103.22  | 1.06  |         |
| 01 Jan            | Sliding       | 07:42      | 07:47    | 0.08  | 36.32           | 41.32         | 5.00              |         | 64.98      |           |                      |                                 |                 | -90.00  | 0.29    | 101.23  | 2.22  |         |
| 01 Jan            | Rotating      | 07:47      | 07:59    | 0.20  | 41.32           | 45.29         | 3.97              | 15      | 19.86      | 30        | 3,327                | 2.81                            | 313             |         | 0.02    | 207.86  | 2.22  |         |
| 01 Jan            | Sliding       | 07:59      | 08:07    | 0.13  | 45.29           | 49.29         | 4.00              |         | 29.89      |           |                      |                                 |                 | -30.00  | 0.13    | 271.19  | 0.51  |         |
| 01 Jan            | Rotating      | 08:07      | 08:17    | 0.17  | 49.29           | 54.49         | 5.20              | 15      | 31.18      | 30        | 3,268                | 2.55                            | 304             |         | 0.04    | 272.46  | 0.51  |         |
| 01 Jan            | Sliding       | 08:17      | 08:26    | 0.16  | 54.49           | 57.49         | 3.00              |         | 18.20      |           |                      |                                 |                 | 150.00  | 0.01    | 55.75   | 0.28  |         |
| 01 Jan            | Rotating      | 08:26      | 08:36    | 0.15  | 57.49           | 63.35         | 5.86              | 15      | 38.83      | 36        | 3,231                | 2.77                            | 346             |         | 0.06    | 77.00   | 0.28  |         |
| 01 Jan            | Sliding       | 08:36      | 08:43    | 0.13  | 63.35           | 68.35         | 5.00              |         | 39.80      |           |                      |                                 |                 | 160.00  | 0.11    | 86.01   | 0.42  |         |
| 01 Jan            | Rotating      | 08:43      | 08:55    | 0.20  | 68.35           | 72.52         | 4.16              | 15      | 20.87      | 29        | 3,103                | 2.63                            | 324             |         | 0.17    | 94.16   | 0.42  |         |
| 01 Jan            | Sliding       | 08:55      | 09:06    | 0.18  | 72.52           | 77.52         | 5.00              |         | 27.30      |           |                      |                                 |                 | 180.00  | 0.06    | 134.65  | 1.54  |         |
| 01 Jan            | Rotating      | 09:06      | 09:15    | 0.15  | 77.52           | 82.14         | 4.62              | 15      | 30.15      | 32        | 3,240                | 2.96                            | 306             |         | 0.21    | 249.41  | 1.54  |         |
| 01 Jan            | Sliding       | 09:15      | 09:27    | 0.20  | 82.14           | 88.14         | 6.00              |         | 29.54      |           |                      |                                 |                 |         | 0.21    | 247.35  | 0.92  |         |
| 01 Jan            | Rotating      | 09:27      | 09:32    | 0.07  | 88.14           | 90.53         | 2.39              | 15      | 34.71      | 38        | 3,248                | 2.84                            | 341             |         | 0.14    | 237.55  | 0.92  |         |
| 01 Jan            | Sliding       | 09:32      | 09:42    | 0.17  | 90.53           | 93.53         | 3.00              |         | 17.23      |           |                      |                                 |                 | 160.00  | 0.08    | 202.38  | 0.92  |         |
| 01 Jan            | Rotating      | 09:42      | 09:49    | 0.12  | 93.53           | 100.42        | 6.90              | 16      | 58.84      | 37        | 3,151                | 2.74                            | 331             |         | 0.05    | 224.13  | 0.17  |         |
| 01 Jan            | Sliding       | 09:49      | 09:54    | 0.09  | 100.42          | 104.42        | 4.00              |         | 44.05      |           |                      |                                 |                 | 180.00  | 0.10    | 254.41  | 0.98  |         |
| 01 Jan            | Rotating      | 09:54      | 10:06    | 0.19  | 104.42          | 109.63        | 5.20              | 16      | 27.61      | 30        | 3,101                | 2.81                            | 337             |         | 0.26    | 262.30  | 0.98  |         |
| 01 Jan            | Sliding       | 10:06      | 10:12    | 0.10  | 109.63          | 114.63        | 5.00              |         | 51.12      |           |                      |                                 |                 | 170.00  | 0.20    | 258.97  | 0.97  |         |
| 01 Jan            | Rotating      | 10:12      | 10:27    | 0.25  | 114.63          | 118.67        | 4.04              | 15      | 16.32      | 31        | 3,373                | 2.77                            | 336             |         | 0.08    | 240.32  | 0.97  |         |
| 01 Jan            | Sliding       | 10:27      | 10:35    | 0.15  | 118.67          | 121.67        | 3.00              |         | 20.52      |           |                      |                                 |                 | 40.00   | 0.03    | 181.58  | 0.35  |         |
| 01 Jan            | Rotating      | 10:35      | 10:46    | 0.18  | 121.67          | 127.16        | 5.49              | 15      | 30.64      | 35        | 3,367                | 2.99                            | 314             |         | 0.04    | 43.62   | 0.35  |         |
| 01 Jan            | Sliding       | 10:46      | 10:53    | 0.12  | 127.16          | 132.16        | 5.00              |         | 42.04      |           |                      |                                 |                 | -150.00 | 0.06    | 35.80   | 0.26  |         |
| 01 Jan            | Rotating      | 10:53      | 11:03    | 0.16  | 132.16          | 136.68        | 4.52              | 15      | 28.46      | 33        | 3,109                | 2.98                            | 322             |         | 0.02    | 48.93   | 0.26  |         |
| 01 Jan            | Sliding       | 11:03      | 11:10    | 0.13  | 136.68          | 141.68        | 5.00              |         | 38.77      |           |                      |                                 |                 | -160.00 | 0.08    | 200.58  | 0.91  |         |
| 01 Jan            | Rotating      | 11:10      | 11:20    | 0.16  | 141.68          | 146.28        | 4.60              | 15      | 28.93      | 36        | 3,249                | 2.85                            | 322             |         | 0.22    | 202.80  | 0.91  |         |
| 01 Jan            | Sliding       | 11:20      | 11:26    | 0.10  | 146.28          | 150.28        | 4.00              |         | 41.63      |           |                      |                                 |                 | -170.00 | 0.19    | 198.70  | 1.17  |         |
| 01 Jan            | Rotating      | 11:26      | 11:36    | 0.17  | 150.28          | 155.35        | 5.08              | 15      | 29.97      | 37        | 3,062                | 2.84                            | 340             |         | 0.05    | 105.86  | 1.17  |         |
| 01 Jan            | Sliding       | 11:36      | 11:49    | 0.21  | 155.35          | 159.35        | 4.00              |         | 18.87      |           |                      |                                 |                 | 10.00   | 0.10    | 54.65   | 0.38  |         |
| 01 Jan            | Rotating      | 11:49      | 11:55    | 0.10  | 159.35          | 164.09        | 4.73              | 16      | 46.27      | 32        | 3,430                | 2.94                            | 312             |         | 0.04    | 47.52   | 0.38  |         |
| 01 Jan            | Sliding       | 11:55      | 12:08    | 0.22  | 164.09          | 168.09        | 4.00              |         | 18.11      |           |                      |                                 |                 | 180.00  | 0.02    | 204.19  | 0.69  |         |
| 01 Jan            | Rotating      | 12:08      | 12:13    | 0.09  | 168.09          | 173.83        | 5.74              | 16      | 65.43      | 35        | 3,406                | 2.92                            | 337             |         | 0.15    | 196.90  | 0.69  |         |
| 01 Jan            | Sliding       | 12:13      | 12:22    | 0.15  | 173.83          | 178.83        | 5.00              |         | 32.90      |           |                      |                                 |                 | 180.00  | 0.23    | 166.43  | 0.96  |         |
| 01 Jan            | Rotating      | 12:22      | 12:33    | 0.17  | 178.83          | 182.89        | 4.06              | 15      | 23.58      | 30        | 3,316                | 2.62                            | 348             |         | 0.32    | 147.80  | 0.96  |         |
| 01 Jan            | Sliding       | 12:33      | 12:46    | 0.22  | 182.89          | 185.89        | 3.00              |         | 13.80      |           |                      |                                 |                 | 180.00  | 0.35    | 142.54  | 1.72  |         |
| 01 Jan            | Rotating      | 12:46      | 12:51    | 0.09  | 185.89          | 191.22        | 5.33              | 16      | 57.63      | 34        | 3,039                | 2.76                            | 320             |         | 0.08    | 191.41  | 1.72  |         |
| 01 Jan            | Sliding       | 12:51      | 12:58    | 0.10  | 191.22          | 195.22        | 4.00              |         | 38.53      |           |                      |                                 |                 | -60.00  | 0.09    | 266.52  | 0.98  |         |

**End of Well Report for AA Pad, AA16**

| Drilling Records  |               |            |          |       |                 |               |                   |         |            |           |                      |                                 |                 |         |         |         | *Surveys are interpolated from actual surveys |         |
|-------------------|---------------|------------|----------|-------|-----------------|---------------|-------------------|---------|------------|-----------|----------------------|---------------------------------|-----------------|---------|---------|---------|---|---------|
| Date              | Drilling Mode | Start Time | End Time | Hours | Start Depth (m) | End Depth (m) | Depth Drilled (m) | WOB (N) | ROP (m/hr) | RPM (RPM) | Surface Torque (N-m) | Flow Rate (m <sup>3</sup> /min) | Delta SPP (kPa) | TFO (°) | INC (°) | AZM (°) | DLS (°/30m)                                   | Comment |
| 01 Jan            | Rotating      | 12:58      | 13:12    | 0.24  | 195.22          | 201.26        | 6.04              | 15      | 25.64      | 32        | 3,076                | 2.69                            | 342             |         | 0.14    | 152.74  | 0.98  |         |
| 01 Jan            | Sliding       | 13:12      | 13:17    | 0.09  | 201.26          | 206.26        | 5.00              |         | 53.47      |           |                      |                                 |                 | 180.00  | 0.11    | 176.68  | 1.13  |         |
| 01 Jan            | Rotating      | 13:17      | 13:30    | 0.22  | 206.26          | 209.83        | 3.56              | 16      | 16.31      | 36        | 3,054                | 2.88                            | 314             |         | 0.13    | 244.28  | 1.13  |         |
| 01 Jan            | Sliding       | 13:30      | 13:35    | 0.08  | 209.83          | 212.83        | 3.00              |         | 36.68      |           |                      |                                 |                 | -170.00 | 0.21    | 264.50  | 0.82  |         |
| 01 Jan            | Rotating      | 13:35      | 13:45    | 0.17  | 212.83          | 219.14        | 6.31              | 16      | 37.29      | 36        | 3,225                | 2.91                            | 301             |         | 0.31    | 232.44  | 0.82  |         |
| 01 Jan            | Sliding       | 13:45      | 13:57    | 0.20  | 219.14          | 223.14        | 4.00              |         | 20.09      |           |                      |                                 |                 | 130.00  | 0.27    | 226.53  | 1.17  |         |
| 01 Jan            | Rotating      | 13:57      | 14:04    | 0.11  | 223.14          | 228.53        | 5.39              | 15      | 50.67      | 31        | 3,467                | 2.53                            | 329             |         | 0.06    | 216.92  | 1.17  |         |
| 01 Jan            | Sliding       | 14:04      | 14:18    | 0.23  | 228.53          | 233.53        | 5.00              |         | 21.37      |           |                      |                                 |                 | -60.00  | 0.10    | 105.52  | 0.85  |         |
| 01 Jan            | Rotating      | 14:18      | 14:25    | 0.12  | 233.53          | 236.97        | 3.44              | 16      | 29.80      | 31        | 3,280                | 2.56                            | 335             |         | 0.20    | 111.04  | 0.85  |         |
| 01 Jan            | Sliding       | 14:25      | 14:31    | 0.11  | 236.97          | 240.97        | 4.00              |         | 35.77      |           |                      |                                 |                 | 170.00  | 0.39    | 104.81  | 2.77  |         |
| 01 Jan            | Rotating      | 14:31      | 14:42    | 0.17  | 240.97          | 246.66        | 5.69              | 15      | 33.61      | 34        | 3,291                | 2.98                            | 320             |         | 0.90    | 94.06   | 2.77  |         |
| 01 Jan            | Sliding       | 14:42      | 14:52    | 0.18  | 246.66          | 252.66        | 6.00              |         | 34.04      |           |                      |                                 |                 | 30.00   | 1.75    | 108.07  | 5.71  |         |
| 01 Jan            | Rotating      | 14:52      | 15:01    | 0.15  | 252.66          | 255.68        | 3.03              | 16      | 20.19      | 33        | 3,473                | 2.73                            | 304             |         | 2.29    | 113.52  | 5.71  |         |
| 01 Jan            | Sliding       | 15:01      | 15:13    | 0.19  | 255.68          | 260.68        | 5.00              |         | 26.29      |           |                      |                                 |                 | -20.00  | 3.27    | 112.07  | 6.75  |         |
| 01 Jan            | Rotating      | 15:13      | 15:22    | 0.16  | 260.68          | 264.66        | 3.98              | 15      | 25.14      | 29        | 3,029                | 2.78                            | 327             |         | 4.12    | 107.63  | 6.75  |         |
| 01 Jan            | Sliding       | 15:22      | 15:31    | 0.16  | 264.66          | 269.66        | 5.00              |         | 32.24      |           |                      |                                 |                 | 40.00   | 5.24    | 105.51  | 6.99  |         |
| 01 Jan            | Rotating      | 15:31      | 15:39    | 0.13  | 269.66          | 274.14        | 4.47              | 15      | 35.48      | 36        | 3,173                | 2.53                            | 308             |         | 6.29    | 105.43  | 6.99  |         |
| 01 Jan            | Sliding       | 15:39      | 15:51    | 0.21  | 274.14          | 279.14        | 5.00              |         | 24.32      |           |                      |                                 |                 | -10.00  | 7.46    | 105.50  | 7.05  |         |
| 01 Jan            | Rotating      | 15:51      | 15:58    | 0.11  | 279.14          | 283.31        | 4.18              | 15      | 37.01      | 29        | 3,037                | 2.83                            | 301             |         | 8.44    | 105.60  | 7.05  |         |
| 01 Jan            | Sliding       | 15:58      | 16:07    | 0.15  | 283.31          | 286.31        | 3.00              |         | 19.84      |           |                      |                                 |                 | -30.00  | 9.21    | 105.68  | 9.07  |         |
| 01 Jan            | Rotating      | 16:07      | 16:15    | 0.13  | 286.31          | 292.08        | 5.77              | 15      | 45.00      | 33        | 3,382                | 2.66                            | 323             |         | 10.96   | 105.91  | 9.07  |         |
| 01 Jan            | Sliding       | 16:15      | 16:25    | 0.18  | 292.08          | 297.08        | 5.00              |         | 28.18      |           |                      |                                 |                 | 12.41   | 105.91  | 8.22    |   |         |
| 01 Jan            | Rotating      | 16:25      | 16:33    | 0.13  | 297.08          | 301.24        | 4.17              | 16      | 31.89      | 36        | 3,092                | 2.62                            | 303             |         | 13.55   | 105.77  | 8.22  |         |
| 01 Jan            | Sliding       | 16:33      | 16:45    | 0.20  | 301.24          | 306.24        | 5.00              |         | 25.63      |           |                      |                                 |                 | -10.00  | 14.92   | 109.89  | 16.88   |         |
| 01 Jan            | Rotating      | 16:45      | 16:50    | 0.08  | 306.24          | 310.94        | 4.70              | 16      | 59.78      | 32        | 3,178                | 2.95                            | 336             |         | 16.43   | 117.93  | 16.88   |         |
| 01 Jan            | Sliding       | 16:50      | 16:59    | 0.15  | 310.94          | 314.94        | 4.00              |         | 27.42      |           |                      |                                 |                 | -20.00  | 17.65   | 121.89  | 9.49  |         |
| 01 Jan            | Rotating      | 16:59      | 17:06    | 0.12  | 314.94          | 320.09        | 5.14              | 15      | 41.31      | 32        | 3,274                | 2.99                            | 325             |         | 19.02   | 124.71  | 9.49  |         |
| <b>MWD Run #2</b> |               |            |          |       |                 |               |                   |         |            |           |                      |                                 |                 |         |         |         |   |         |
| 01 Jan            | Sliding       | 19:36      | 19:40    | 0.08  | 320.09          | 326.09        | 6.00              |         | 73.55      |           |                      |                                 |                 | 50.00   | 20.84   | 126.01  | 9.56  |         |
| 01 Jan            | Rotating      | 19:40      | 19:52    | 0.20  | 326.09          | 329.67        | 3.59              | 16      | 18.27      | 33        | 3,015                | 2.54                            | 315             |         | 21.97   | 126.37  | 9.56  |         |
| 01 Jan            | Sliding       | 19:52      | 19:58    | 0.09  | 329.67          | 335.67        | 6.00              |         | 66.99      |           |                      |                                 |                 | 50.00   | 23.83   | 127.61  | 9.60  |         |
| 01 Jan            | Rotating      | 19:58      | 20:09    | 0.19  | 335.67          | 338.75        | 3.07              | 16      | 15.99      | 34        | 3,357                | 2.66                            | 345             |         | 24.78   | 128.22  | 9.60  |         |
| 01 Jan            | Sliding       | 20:09      | 20:21    | 0.20  | 338.75          | 342.75        | 4.00              |         | 19.91      |           |                      |                                 |                 | 10.00   | 25.99   | 129.14  | 9.53  |         |
| 01 Jan            | Rotating      | 20:21      | 20:28    | 0.12  | 342.75          | 347.22        | 4.47              | 16      | 37.90      | 29        | 3,069                | 2.79                            | 326             |         | 27.33   | 130.17  | 9.53  |         |
| 01 Jan            | Sliding       | 20:28      | 20:34    | 0.10  | 347.22          | 351.22        | 4.00              |         | 38.83      |           |                      |                                 |                 | 10.00   | 28.58   | 130.84  | 9.88  |         |
| 01 Jan            | Rotating      | 20:34      | 20:47    | 0.21  | 351.22          | 356.83        | 5.62              | 15      | 26.45      | 37        | 3,229                | 2.61                            | 335             |         | 30.41   | 131.44  | 9.88  |         |
| 01 Jan            | Sliding       | 20:47      | 20:59    | 0.20  | 356.83          | 360.83        | 4.00              |         | 19.68      |           |                      |                                 |                 |         | 31.56   | 132.04  | 8.70  |         |
| 01 Jan            | Rotating      | 20:59      | 21:07    | 0.12  | 360.83          | 366.27        | 5.43              | 15      | 45.06      | 34        | 3,044                | 2.90                            | 312             |         | 33.07   | 132.87  | 8.70  |         |
| 01 Jan            | Sliding       | 21:07      | 21:14    | 0.12  | 366.27          | 372.27        | 6.00              |         | 49.30      |           |                      |                                 |                 |         | 34.79   | 132.96  | 8.64  |         |
| 01 Jan            | Rotating      | 21:14      | 21:26    | 0.20  | 372.27          | 374.68        | 2.41              | 16      | 12.11      | 35        | 3,343                | 2.61                            | 311             |         | 35.49   | 132.94  | 8.64  |         |
| 01 Jan            | Sliding       | 21:26      | 21:36    | 0.17  | 374.68          | 377.68        | 3.00              |         | 17.61      |           |                      |                                 |                 | -10.00  | 36.29   | 132.91  | 7.58  |         |
| 01 Jan            | Rotating      | 21:36      | 21:44    | 0.14  | 377.68          | 384.12        | 6.44              | 15      | 46.46      | 29        | 3,081                | 2.76                            | 345             |         | 37.91   | 132.84  | 7.58  |         |
| 01 Jan            | Sliding       | 21:44      | 21:58    | 0.23  | 384.12          | 387.12        | 3.00              |         | 12.88      |           |                      |                                 |                 | -20.00  | 38.71   | 132.83  | 8.58  |         |
| 01 Jan            | Rotating      | 21:58      | 22:03    | 0.08  | 387.12          | 392.84        | 5.72              | 16      | 70.13      | 37        | 3,339                | 2.55                            | 343             |         | 40.35   | 132.89  | 8.58  |         |
| 01 Jan            | Sliding       | 22:03      | 22:15    | 0.19  | 392.84          | 396.84        | 4.00              |         | 20.70      |           |                      |                                 |                 | 20.00   | 41.41   | 132.97  | 7.43  |         |
| 01 Jan            | Rotating      | 22:15      | 22:21    | 0.10  | 396.84          | 402.89        | 6.04              | 15      | 62.70      | 33        | 3,322                | 2.76                            | 344             |         | 42.90   | 133.13  | 7.43  |         |
| 01 Jan            | Sliding       | 22:21      | 22:31    | 0.18  | 402.89          | 407.89        | 5.00              |         | 28.50      |           |                      |                                 |                 | -30.00  | 44.15   | 133.24  | 7.54  |         |
| 01 Jan            | Rotating      | 22:31      | 22:40    | 0.14  | 407.89          | 411.71        | 3.83              | 16      | 27.42      | 35        | 3,288                | 2.62                            | 318             |         | 45.11   | 133.32  | 7.54  |         |
| 01 Jan            | Sliding       | 22:40      | 22:53    | 0.23  | 411.71          | 415.71        | 4.00              |         | 17.44      |           |                      |                                 |                 | -10.00  | 46.22   | 133.35  | 8.64  |         |
| 01 Jan            | Rotating      | 22:53      | 22:58    | 0.08  | 415.71          | 420.20        | 4.49              | 16      | 57.30      | 34        | 3,055                | 2.98                            | 307             |         | 47.52   | 133.35  | 8.64  |         |
| 01 Jan            | Sliding       | 22:58      | 23:10    | 0.20  | 420.20          | 425.20        | 5.00              |         | 25.63      |           |                      |                                 |                 |         | 48.83   | 133.15  | 7.68  |         |
| 01 Jan            | Rotating      | 23:10      | 23:17    | 0.12  | 425.20          | 429.91        | 4.71              | 15      | 39.24      | 34        | 3,208                | 2.66                            | 307             |         | 50.02   | 132.91  | 7.68  |         |
| 01 Jan            | Sliding       | 23:17      | 23:22    | 0.08  | 429.91          | 435.91        | 6.00              |         | 71.74      |           |                      |                                 |                 | 0.00    | 51.86   | 132.48  | 9.62  |         |
| 01 Jan            | Rotating      | 23:22      | 23:35    | 0.21  | 435.91          | 438.59        | 2.67              | 16      | 12.54      | 35        | 3,273                | 2.63                            | 320             |         | 52.70   | 132.29  | 9.62  |         |
| 01 Jan            | Sliding       | 23:35      | 23:44    | 0.16  | 438.59          | 442.59        | 4.00              |         | 25.63      |           |                      |                                 |                 | -20.00  | 53.86   | 132.15  | 7.85  |         |
| 01 Jan            | Rotating      | 23:44      | 23:55    | 0.18  | 442.59          | 447.74        | 5.15              | 15      | 28.30      | 37        | 3,400                | 2.52                            | 307             |         | 55.21   | 132.15  | 7.85  |         |
| 01 Jan            | Sliding       | 23:55      | 00:06    | 0.18  | 447.74          | 452.74        | 5.00              |         | 28.02      |           |                      |                                 |                 | 0.00    | 56.57   | 132.28  | 8.36  |         |
| 02 Jan            | Rotating      | 00:06      | 00:16    | 0.17  | 452.74          | 457.59        | 4.85              | 15      | 28.52      | 34        | 3,365                | 2.58                            | 344             |         | 57.91   | 132.45  | 8.36  |         |
| 02 Jan            | Sliding       | 00:16      | 00:22    | 0.11  | 457.59          | 460.59        | 3.00              |         | 27.72      |           |                      |                                 |                 | 20.00   | 58.61   | 132.58  | 6.79  |         |
| 02 Jan            | Rotating      | 00:22      | 00:32    | 0.15  | 460.59          | 466.22        | 5.64              | 16      | 36.57      | 34        | 3,067                | 2.66                            | 318             |         | 59.86   | 132.83  | 6.79  |         |
| 02 Jan            | Sliding       | 00:32      | 00:37    | 0.09  | 466.22          | 469.22        | 3.00              |         | 33.24      |           |                      |                                 |                 | 20.00   | 60.65   | 132.80  | 8.84  |         |
| 02 Jan            | Rotating      | 00:37      | 00:52    | 0.25  | 469.22          | 475.13        | 5.91              | 15      | 23.68      | 35        | 3,033                | 2.78                            | 330             |         | 62.37   | 132.51  | 8.84  |         |

**End of Well Report for AA Pad, AA16**

| Drilling Records |               |            |          |       |                 |               |                   |         |            |           |                      |                                 |                 |         |         |         |             | *Surveys are interpolated from actual surveys |  |
|------------------|---------------|------------|----------|-------|-----------------|---------------|-------------------|---------|------------|-----------|----------------------|---------------------------------|-----------------|---------|---------|---------|-------------|---|--|
| Date             | Drilling Mode | Start Time | End Time | Hours | Start Depth (m) | End Depth (m) | Depth Drilled (m) | WOB (N) | ROP (m/hr) | RPM (RPM) | Surface Torque (N-m) | Flow Rate (m <sup>3</sup> /min) | Delta SPP (kPa) | TFO (°) | INC (°) | AZM (°) | DLS (°/30m) | Comment                                       |  |
| 02 Jan           | Sliding       | 00:52      | 00:57    | 0.08  | 475.13          | 480.13        | 5.00              |         | 62.70      |           |                      |                                 |                 | 10.00   | 63.86   | 132.57  | 9.06        |   |  |
| 02 Jan           | Rotating      | 00:57      | 01:08    | 0.19  | 480.13          | 484.53        | 4.40              | 16      | 23.66      | 38        | 3,412                | 2.53                            | 342             |         | 65.18   | 132.74  | 9.06        |   |  |
| 02 Jan           | Sliding       | 01:08      | 01:16    | 0.13  | 484.53          | 487.53        | 3.00              |         | 23.22      |           |                      |                                 |                 | 0.00    | 65.99   | 132.76  | 7.51        |   |  |
| 02 Jan           | Rotating      | 01:16      | 01:29    | 0.22  | 487.53          | 493.77        | 6.24              | 16      | 28.29      | 37        | 3,480                | 2.68                            | 330             |         | 67.55   | 132.63  | 7.51        |   |  |
| 02 Jan           | Sliding       | 01:29      | 01:36    | 0.13  | 493.77          | 498.77        | 5.00              |         | 39.94      |           |                      |                                 |                 | 40.00   | 68.72   | 132.69  | 6.88        |   |  |
| 02 Jan           | Rotating      | 01:36      | 01:45    | 0.14  | 498.77          | 502.84        | 4.07              | 15      | 28.50      | 33        | 3,462                | 2.99                            | 344             |         | 69.65   | 132.82  | 6.88        |   |  |
| 02 Jan           | Sliding       | 01:45      | 01:57    | 0.21  | 502.84          | 505.84        | 3.00              |         | 14.45      |           |                      |                                 |                 | -10.00  | 70.45   | 132.88  | 10.31       |   |  |
| 02 Jan           | Rotating      | 01:57      | 02:03    | 0.09  | 505.84          | 512.64        | 6.80              | 16      | 73.62      | 36        | 3,369                | 2.92                            | 346             |         | 72.78   | 132.84  | 10.31       |   |  |
| 02 Jan           | Sliding       | 02:03      | 02:09    | 0.10  | 512.64          | 517.64        | 5.00              |         | 49.10      |           |                      |                                 |                 | 10.00   | 74.12   | 132.84  | 7.59        |   |  |
| 02 Jan           | Rotating      | 02:09      | 02:21    | 0.20  | 517.64          | 521.82        | 4.18              | 16      | 20.43      | 29        | 3,290                | 2.89                            | 322             |         | 75.17   | 132.83  | 7.59        |   |  |
| 02 Jan           | Sliding       | 02:21      | 02:35    | 0.22  | 521.82          | 525.82        | 4.00              |         | 18.17      |           |                      |                                 |                 | 20.00   | 76.00   | 132.58  | 6.32        |   |  |
| 02 Jan           | Rotating      | 02:35      | 02:42    | 0.12  | 525.82          | 530.39        | 4.57              | 15      | 39.39      | 32        | 3,101                | 2.63                            | 349             |         | 76.90   | 132.23  | 6.32        |   |  |
| 02 Jan           | Sliding       | 02:42      | 02:50    | 0.15  | 530.39          | 535.39        | 5.00              |         | 34.42      |           |                      |                                 |                 | 20.00   | 78.39   | 132.37  | 9.93        |   |  |
| 02 Jan           | Rotating      | 02:50      | 02:57    | 0.12  | 535.39          | 539.42        | 4.03              | 15      | 34.22      | 36        | 3,304                | 2.99                            | 315             |         | 79.71   | 132.60  | 9.93        |   |  |
| 02 Jan           | Sliding       | 02:57      | 03:07    | 0.16  | 539.42          | 544.42        | 5.00              |         | 32.25      |           |                      |                                 |                 | -20.00  | 81.09   | 132.64  | 7.84        |   |  |
| 02 Jan           | Rotating      | 03:07      | 03:14    | 0.13  | 544.42          | 548.45        | 4.03              | 15      | 30.87      | 37        | 3,026                | 2.93                            | 321             |         | 82.15   | 132.62  | 7.84        |   |  |
| 02 Jan           | Sliding       | 03:14      | 03:20    | 0.09  | 548.45          | 553.45        | 5.00              |         | 56.80      |           |                      |                                 |                 | 20.00   | 82.49   | 132.65  | 1.25        |   |  |
| 02 Jan           | Rotating      | 03:20      | 03:34    | 0.24  | 553.45          | 557.60        | 4.15              | 15      | 17.30      | 32        | 3,020                | 2.55                            | 330             |         | 82.32   | 132.70  | 1.25        |   |  |
| 02 Jan           | Sliding       | 03:34      | 03:44    | 0.17  | 557.60          | 560.60        | 3.00              |         | 17.81      |           |                      |                                 |                 | 20.00   | 82.33   | 132.68  | 1.69        |   |  |
| 02 Jan           | Rotating      | 03:44      | 03:55    | 0.17  | 560.60          | 567.24        | 6.63              | 15      | 38.88      | 31        | 3,162                | 2.57                            | 319             |         | 82.63   | 132.45  | 1.69        |   |  |
| 02 Jan           | Sliding       | 03:55      | 04:05    | 0.18  | 567.24          | 571.24        | 4.00              |         | 22.04      |           |                      |                                 |                 | 160.00  | 82.67   | 132.46  | 0.45        |   |  |
| 02 Jan           | Rotating      | 04:05      | 04:12    | 0.11  | 571.24          | 576.15        | 4.91              | 16      | 44.30      | 35        | 3,453                | 2.84                            | 325             |         | 82.65   | 132.53  | 0.45        |   |  |
| 02 Jan           | Sliding       | 04:12      | 04:23    | 0.19  | 576.15          | 579.15        | 3.00              |         | 15.90      |           |                      |                                 |                 | -40.00  | 82.63   | 132.52  | 0.83        |   |  |
| 02 Jan           | Rotating      | 04:23      | 04:29    | 0.10  | 579.15          | 585.30        | 6.15              | 15      | 62.59      | 30        | 3,022                | 2.83                            | 300             |         | 82.54   | 132.38  | 0.83        |   |  |
| 02 Jan           | Sliding       | 04:29      | 04:34    | 0.07  | 585.30          | 589.30        | 4.00              |         | 54.34      |           |                      |                                 |                 | 130.00  | 82.73   | 132.46  | 2.53        |   |  |
| 02 Jan           | Rotating      | 04:34      | 04:46    | 0.20  | 589.30          | 594.75        | 5.45              | 15      | 26.80      | 29        | 3,231                | 2.55                            | 310             |         | 83.14   | 132.67  | 2.53        |   |  |
| 02 Jan           | Sliding       | 04:46      | 04:53    | 0.12  | 594.75          | 598.75        | 4.00              |         | 33.53      |           |                      |                                 |                 | -120.00 | 83.17   | 132.25  | 5.03        |   |  |
| 02 Jan           | Rotating      | 04:53      | 05:07    | 0.23  | 598.75          | 603.51        | 4.76              | 15      | 21.17      | 37        | 3,353                | 2.73                            | 321             |         | 83.07   | 131.45  | 5.03        |   |  |
| 02 Jan           | Sliding       | 05:07      | 05:14    | 0.13  | 603.51          | 607.51        | 4.00              |         | 31.37      |           |                      |                                 |                 | 10.00   | 83.02   | 131.20  | 0.65        |   |  |
| 02 Jan           | Rotating      | 05:14      | 05:24    | 0.16  | 607.51          | 612.97        | 5.46              | 15      | 34.08      | 32        | 3,453                | 2.75                            | 335             |         | 82.95   | 131.10  | 0.65        |   |  |
| 02 Jan           | Sliding       | 05:24      | 05:35    | 0.19  | 612.97          | 616.97        | 4.00              |         | 20.62      |           |                      |                                 |                 | -110.00 | 82.85   | 131.43  | 3.36        |   |  |
| 02 Jan           | Rotating      | 05:35      | 05:42    | 0.11  | 616.97          | 621.70        | 4.72              | 16      | 44.11      | 37        | 3,164                | 2.95                            | 306             |         | 82.71   | 131.95  | 3.36        |   |  |
| 02 Jan           | Sliding       | 05:42      | 05:54    | 0.20  | 621.70          | 626.70        | 5.00              |         | 24.86      |           |                      |                                 |                 | -100.00 | 82.79   | 131.61  | 4.79        |   |  |
| 02 Jan           | Rotating      | 05:54      | 06:00    | 0.10  | 626.70          | 630.82        | 4.13              | 15      | 40.21      | 30        | 3,246                | 2.83                            | 301             |         | 82.94   | 130.96  | 4.79        |   |  |
| 02 Jan           | Sliding       | 06:00      | 06:07    | 0.11  | 630.82          | 633.82        | 3.00              |         | 26.36      |           |                      |                                 |                 | 110.00  | 82.89   | 130.89  | 2.47        |   |  |
| 02 Jan           | Rotating      | 06:07      | 06:21    | 0.23  | 633.82          | 640.37        | 6.55              | 15      | 28.94      | 37        | 3,085                | 2.98                            | 301             |         | 82.58   | 131.34  | 2.47        |   |  |
| 02 Jan           | Sliding       | 06:21      | 06:31    | 0.17  | 640.37          | 646.37        | 6.00              |         | 34.44      |           |                      |                                 |                 | -90.00  | 82.56   | 131.77  | 2.21        |   |  |
| 02 Jan           | Rotating      | 06:31      | 06:37    | 0.10  | 646.37          | 649.02        | 2.65              | 15      | 25.33      | 32        | 3,189                | 2.63                            | 347             |         | 82.59   | 131.97  | 2.21        |   |  |
| 02 Jan           | Sliding       | 06:37      | 06:49    | 0.20  | 649.02          | 654.02        | 5.00              |         | 25.62      |           |                      |                                 |                 | 110.00  | 82.63   | 131.73  | 4.08        |   |  |
| 02 Jan           | Rotating      | 06:49      | 06:56    | 0.12  | 654.02          | 658.55        | 4.53              | 15      | 38.02      | 36        | 3,195                | 2.64                            | 345             |         | 82.67   | 131.11  | 4.08        |   |  |
| 02 Jan           | Sliding       | 06:56      | 07:05    | 0.14  | 658.55          | 663.55        | 5.00              |         | 35.17      |           |                      |                                 |                 | 70.00   | 82.89   | 130.96  | 1.59        |   |  |
| 02 Jan           | Rotating      | 07:05      | 07:12    | 0.12  | 663.55          | 668.14        | 4.60              | 16      | 37.27      | 37        | 3,360                | 2.98                            | 313             |         | 83.13   | 130.96  | 1.59        |   |  |
| 02 Jan           | Sliding       | 07:12      | 07:24    | 0.20  | 668.14          | 672.14        | 4.00              |         | 20.46      |           |                      |                                 |                 | -80.00  | 82.94   | 130.74  | 3.47        |   |  |
| 02 Jan           | Rotating      | 07:24      | 07:29    | 0.08  | 672.14          | 676.65        | 4.51              | 15      | 55.41      | 33        | 3,071                | 2.75                            | 329             |         | 82.55   | 130.40  | 3.47        |   |  |
| 02 Jan           | Sliding       | 07:29      | 07:34    | 0.09  | 676.65          | 679.65        | 3.00              |         | 34.69      |           |                      |                                 |                 | -20.00  | 82.54   | 129.90  | 7.68        |   |  |
| 02 Jan           | Rotating      | 07:34      | 07:46    | 0.20  | 679.65          | 686.32        | 6.67              | 16      | 32.88      | 30        | 3,405                | 2.97                            | 342             |         | 83.03   | 128.26  | 7.68        |   |  |
| 02 Jan           | Sliding       | 07:46      | 07:57    | 0.19  | 686.32          | 691.32        | 5.00              |         | 26.28      |           |                      |                                 |                 | -150.00 | 83.03   | 127.14  | 6.51        |   |  |
| 02 Jan           | Rotating      | 07:57      | 08:03    | 0.09  | 691.32          | 695.07        | 3.74              | 16      | 40.79      | 31        | 3,080                | 2.63                            | 316             |         | 82.98   | 126.33  | 6.51        |   |  |
| 02 Jan           | Sliding       | 08:03      | 08:08    | 0.09  | 695.07          | 700.07        | 5.00              |         | 53.93      |           |                      |                                 |                 | -50.00  | 82.92   | 124.87  | 9.90        |   |  |
| 02 Jan           | Rotating      | 08:08      | 08:19    | 0.18  | 700.07          | 704.13        | 4.06              | 15      | 22.38      | 35        | 3,190                | 2.97                            | 302             |         | 82.89   | 123.52  | 9.90        |   |  |
| 02 Jan           | Sliding       | 08:19      | 08:28    | 0.14  | 704.13          | 709.13        | 5.00              |         | 36.43      |           |                      |                                 |                 | -110.00 | 82.97   | 122.07  | 8.12        |   |  |
| 02 Jan           | Rotating      | 08:28      | 08:37    | 0.15  | 709.13          | 713.91        | 4.78              | 16      | 32.01      | 35        | 3,158                | 2.51                            | 350             |         | 83.11   | 120.77  | 8.12        |   |  |
| 02 Jan           | Sliding       | 08:37      | 08:43    | 0.11  | 713.91          | 719.91        | 6.00              |         | 55.06      |           |                      |                                 |                 | -70.00  | 83.19   | 119.70  | 4.74        |   |  |
| 02 Jan           | Rotating      | 08:43      | 08:52    | 0.16  | 719.91          | 722.77        | 2.86              | 15      | 18.36      | 38        | 3,035                | 2.88                            | 320             |         | 83.22   | 119.25  | 4.74        |   |  |
| 02 Jan           | Sliding       | 08:52      | 09:02    | 0.16  | 722.77          | 726.77        | 4.00              |         | 24.85      |           |                      |                                 |                 | -60.00  | 83.41   | 117.94  | 11.79       |   |  |
| 02 Jan           | Rotating      | 09:02      | 09:09    | 0.12  | 726.77          | 731.92        | 5.15              | 15      | 43.25      | 30        | 3,492                | 2.86                            | 338             |         | 83.74   | 115.93  | 11.79       |   |  |
| 02 Jan           | Sliding       | 09:09      | 09:20    | 0.17  | 731.92          | 735.92        | 4.00              |         | 22.88      |           |                      |                                 |                 | -100.00 | 84.04   | 114.85  | 7.54        |   |  |
| 02 Jan           | Rotating      | 09:20      | 09:29    | 0.15  | 735.92          | 740.87        | 4.95              | 16      | 32.46      | 33        | 3,330                | 2.83                            | 341             |         | 84.42   | 113.66  | 7.54        |   |  |
| 02 Jan           | Sliding       | 09:29      | 09:38    | 0.16  | 740.87          | 744.87        | 4.00              |         | 25.51      |           |                      |                                 |                 | -80.00  | 84.48   | 112.66  | 7.72        |   |  |
| 02 Jan           | Rotating      | 09:38      | 09:49    | 0.17  | 744.87          | 749.69        | 4.82              | 16      | 28.17      | 30        | 3,472                | 2.82                            | 327             |         | 84.38   | 111.42  | 7.72        |   |  |
| 02 Jan           | Sliding       | 09:49      | 10:03    | 0.24  | 749.69          | 752.69        | 3.00              |         | 12.70      |           |                      |                                 |                 | -80.00  | 84.36   | 110.74  | 5.01        |   |  |

**End of Well Report for AA Pad, AA16**

| Drilling Records  |               |            |          |       |                 |               |                   |         |            |           |                      |                                 |                 |         |         |         |             | *Surveys are interpolated from actual surveys |
|-------------------|---------------|------------|----------|-------|-----------------|---------------|-------------------|---------|------------|-----------|----------------------|---------------------------------|-----------------|---------|---------|---------|-------------|---|
| Date              | Drilling Mode | Start Time | End Time | Hours | Start Depth (m) | End Depth (m) | Depth Drilled (m) | WOB (N) | ROP (m/hr) | RPM (RPM) | Surface Torque (N-m) | Flow Rate (m <sup>3</sup> /min) | Delta SPP (kPa) | TFO (°) | INC (°) | AZM (°) | DLS (°/30m) | Comment                                       |
| 02 Jan            | Rotating      | 10:03      | 10:08    | 0.09  | 752.69          | 759.30        | 6.61              | 16      | 72.66      | 36        | 3,467                | 2.96                            | 309             |         | 84.50   | 109.64  | 5.01        |   |
| 02 Jan            | Sliding       | 10:08      | 10:21    | 0.21  | 759.30          | 763.30        | 4.00              |         | 19.19      |           |                      |                                 |                 | -90.00  | 84.71   | 108.51  | 11.14       |   |
| 02 Jan            | Rotating      | 10:21      | 10:26    | 0.09  | 763.30          | 768.58        | 5.28              | 15      | 60.39      | 31        | 3,489                | 2.53                            | 312             |         | 85.14   | 106.59  | 11.14       |   |
| 02 Jan            | Sliding       | 10:26      | 10:36    | 0.16  | 768.58          | 772.58        | 4.00              |         | 24.79      |           |                      |                                 |                 | -80.00  | 84.89   | 105.63  | 6.65        |   |
| 02 Jan            | Rotating      | 10:36      | 10:46    | 0.17  | 772.58          | 777.95        | 5.37              | 16      | 31.07      | 38        | 3,376                | 2.75                            | 308             |         | 84.13   | 104.71  | 6.65        |   |
| 02 Jan            | Sliding       | 10:46      | 10:58    | 0.19  | 777.95          | 781.95        | 4.00              |         | 20.52      |           |                      |                                 |                 | -90.00  | 83.82   | 103.90  | 8.03        |   |
| 02 Jan            | Rotating      | 10:58      | 11:03    | 0.08  | 781.95          | 787.02        | 5.07              | 16      | 60.63      | 31        | 3,222                | 2.99                            | 301             |         | 84.04   | 102.55  | 8.03        |   |
| <b>MWD Run #3</b> |               |            |          |       |                 |               |                   |         |            |           |                      |                                 |                 |         |         |         |             |   |
| 02 Jan            | Sliding       | 15:33      | 15:44    | 0.19  | 787.02          | 790.02        | 3.00              |         | 15.99      |           |                      |                                 |                 | -120.00 | 84.17   | 101.75  | 8.03        |   |
| 02 Jan            | Rotating      | 15:44      | 15:53    | 0.16  | 790.02          | 796.08        | 6.06              | 16      | 37.49      | 38        | 3,313                | 2.93                            | 330             |         | 84.36   | 100.51  | 6.14        |   |
| 02 Jan            | Sliding       | 15:53      | 16:03    | 0.16  | 796.08          | 799.08        | 3.00              |         | 18.37      |           |                      |                                 |                 | -60.00  | 84.45   | 99.90   | 6.14        |   |
| 02 Jan            | Rotating      | 16:03      | 16:09    | 0.10  | 799.08          | 805.75        | 6.67              | 16      | 66.45      | 37        | 3,099                | 2.97                            | 306             |         | 84.59   | 98.83   | 4.66        |   |
| 02 Jan            | Sliding       | 16:09      | 16:16    | 0.12  | 805.75          | 810.75        | 5.00              |         | 41.64      |           |                      |                                 |                 | -110.00 | 84.76   | 97.67   | 9.79        |   |
| 02 Jan            | Rotating      | 16:16      | 16:29    | 0.22  | 810.75          | 815.28        | 4.53              | 15      | 20.92      | 34        | 3,467                | 2.67                            | 303             |         | 85.01   | 96.20   | 9.79        |   |
| 02 Jan            | Sliding       | 16:29      | 16:36    | 0.11  | 815.28          | 819.28        | 4.00              |         | 34.99      |           |                      |                                 |                 | -70.00  | 85.14   | 94.95   | 8.95        |   |
| 02 Jan            | Rotating      | 16:36      | 16:47    | 0.18  | 819.28          | 823.94        | 4.66              | 16      | 26.27      | 36        | 3,169                | 2.61                            | 335             |         | 85.10   | 93.55   | 8.95        |   |
| 02 Jan            | Sliding       | 16:47      | 16:55    | 0.14  | 823.94          | 829.94        | 6.00              |         | 43.86      |           |                      |                                 |                 | -70.00  | 85.31   | 91.66   | 10.08       |   |
| 02 Jan            | Rotating      | 16:55      | 17:04    | 0.14  | 829.94          | 833.34        | 3.40              | 16      | 24.11      | 33        | 3,081                | 2.51                            | 328             |         | 85.57   | 90.54   | 10.08       |   |
| 02 Jan            | Sliding       | 17:04      | 17:13    | 0.15  | 833.34          | 839.34        | 6.00              |         | 40.51      |           |                      |                                 |                 | -60.00  | 86.04   | 89.05   | 6.14        |   |
| 02 Jan            | Rotating      | 17:13      | 17:20    | 0.12  | 839.34          | 842.31        | 2.97              | 16      | 24.59      | 36        | 3,206                | 2.73                            | 319             |         | 86.29   | 88.49   | 6.14        |   |
| 02 Jan            | Sliding       | 17:20      | 17:29    | 0.15  | 842.31          | 845.31        | 3.00              |         | 19.46      |           |                      |                                 |                 | -110.00 | 86.52   | 87.92   | 6.93        |   |
| 02 Jan            | Rotating      | 17:29      | 17:36    | 0.11  | 845.31          | 851.47        | 6.16              | 15      | 56.25      | 32        | 3,170                | 2.72                            | 311             |         | 86.45   | 86.49   | 6.93        |   |
| 02 Jan            | Sliding       | 17:36      | 17:48    | 0.21  | 851.47          | 854.47        | 3.00              |         | 14.24      |           |                      |                                 |                 | -80.00  | 86.45   | 85.77   | 10.02       |   |
| 02 Jan            | Rotating      | 17:48      | 17:53    | 0.08  | 854.47          | 860.57        | 6.10              | 15      | 81.00      | 36        | 3,226                | 2.59                            | 316             |         | 86.89   | 83.77   | 10.02       |   |
| 02 Jan            | Sliding       | 17:53      | 17:57    | 0.08  | 860.57          | 864.57        | 4.00              |         | 51.22      |           |                      |                                 |                 | -90.00  | 87.10   | 82.66   | 5.07        |   |
| 02 Jan            | Rotating      | 17:57      | 18:10    | 0.21  | 864.57          | 869.61        | 5.04              | 15      | 24.39      | 30        | 3,250                | 2.56                            | 310             |         | 87.14   | 81.81   | 5.07        |   |
| 02 Jan            | Sliding       | 18:10      | 18:20    | 0.17  | 869.61          | 875.61        | 6.00              |         | 34.69      |           |                      |                                 |                 | -80.00  | 87.20   | 80.01   | 12.28       |   |
| 02 Jan            | Rotating      | 18:20      | 18:30    | 0.17  | 875.61          | 878.81        | 3.20              | 15      | 18.83      | 38        | 3,343                | 2.97                            | 345             |         | 87.24   | 78.70   | 12.28       |   |
| 02 Jan            | Sliding       | 18:30      | 18:39    | 0.14  | 878.81          | 883.81        | 5.00              |         | 36.91      |           |                      |                                 |                 | -70.00  | 87.43   | 76.97   | 8.72        |   |
| 02 Jan            | Rotating      | 18:39      | 18:49    | 0.17  | 883.81          | 887.83        | 4.02              | 16      | 23.39      | 33        | 3,282                | 2.95                            | 323             |         | 87.68   | 75.83   | 8.72        |   |
| 02 Jan            | Sliding       | 18:49      | 18:57    | 0.14  | 887.83          | 891.83        | 4.00              |         | 28.87      |           |                      |                                 |                 | -120.00 | 87.87   | 74.80   | 5.99        |   |
| 02 Jan            | Rotating      | 18:57      | 19:05    | 0.14  | 891.83          | 896.77        | 4.94              | 16      | 36.58      | 31        | 3,405                | 2.92                            | 332             |         | 87.92   | 73.81   | 5.99        |   |
| 02 Jan            | Sliding       | 19:05      | 19:15    | 0.15  | 896.77          | 901.77        | 5.00              |         | 32.44      |           |                      |                                 |                 | -80.00  | 88.12   | 72.50   | 13.76       |   |
| 02 Jan            | Rotating      | 19:15      | 19:22    | 0.13  | 901.77          | 906.10        | 4.33              | 16      | 32.90      | 31        | 3,096                | 2.96                            | 302             |         | 88.66   | 70.59   | 13.76       |   |
| 02 Jan            | Sliding       | 19:22      | 19:32    | 0.16  | 906.10          | 910.10        | 4.00              |         | 25.43      |           |                      |                                 |                 | -110.00 | 89.02   | 69.11   | 7.16        |   |
| 02 Jan            | Rotating      | 19:32      | 19:41    | 0.16  | 910.10          | 915.99        | 5.89              | 16      | 37.83      | 33        | 3,365                | 2.83                            | 324             |         | 89.20   | 67.71   | 7.16        |   |
| 02 Jan            | Sliding       | 19:41      | 19:51    | 0.17  | 915.99          | 919.99        | 4.00              |         | 23.66      |           |                      |                                 |                 | -60.00  | 89.29   | 66.58   | 10.29       |   |
| 02 Jan            | Rotating      | 19:51      | 20:02    | 0.18  | 919.99          | 924.22        | 4.23              | 15      | 23.46      | 32        | 3,348                | 2.86                            | 305             |         | 89.35   | 65.13   | 10.29       |   |
| 02 Jan            | Sliding       | 20:02      | 20:15    | 0.22  | 924.22          | 927.22        | 3.00              |         | 13.72      |           |                      |                                 |                 | -100.00 | 89.39   | 64.10   | 10.29       |   |
| 02 Jan            | Rotating      | 20:15      | 20:21    | 0.10  | 927.22          | 933.70        | 6.48              | 16      | 67.88      | 33        | 3,303                | 2.54                            | 311             |         | 89.50   | 64.43   | 1.77        |   |
| 02 Jan            | Sliding       | 20:21      | 20:28    | 0.12  | 933.70          | 939.70        | 6.00              |         | 49.99      |           |                      |                                 |                 | -90.00  | 89.58   | 65.07   | 4.70        |   |
| 02 Jan            | Rotating      | 20:28      | 20:36    | 0.13  | 939.70          | 942.82        | 3.12              | 16      | 23.74      | 36        | 3,117                | 2.96                            | 323             |         | 89.60   | 65.56   | 4.70        |   |
| 02 Jan            | Sliding       | 20:36      | 20:42    | 0.10  | 942.82          | 945.82        | 3.00              |         | 31.29      |           |                      |                                 |                 | 50.00   | 89.63   | 65.95   | 1.45        |   |
| 02 Jan            | Rotating      | 20:42      | 20:56    | 0.23  | 945.82          | 952.10        | 6.28              | 15      | 26.78      | 31        | 3,298                | 2.87                            | 331             |         | 89.70   | 65.65   | 1.45        |   |
| 02 Jan            | Sliding       | 20:56      | 21:11    | 0.25  | 952.10          | 956.10        | 4.00              |         | 16.04      |           |                      |                                 |                 | 80.00   | 89.79   | 65.47   | 1.96        |   |
| 02 Jan            | Rotating      | 21:11      | 21:17    | 0.10  | 956.10          | 960.92        | 4.82              | 15      | 50.40      | 32        | 3,481                | 2.61                            | 343             |         | 90.04   | 65.28   | 1.96        |   |
| 02 Jan            | Sliding       | 21:17      | 21:28    | 0.19  | 960.92          | 965.92        | 5.00              |         | 25.72      |           |                      |                                 |                 | -70.00  | 90.02   | 65.17   | 2.32        |   |
| 02 Jan            | Rotating      | 21:28      | 21:33    | 0.09  | 965.92          | 970.38        | 4.46              | 16      | 51.67      | 32        | 3,051                | 2.86                            | 342             |         | 89.68   | 65.20   | 2.32        |   |
| 02 Jan            | Sliding       | 21:33      | 21:44    | 0.17  | 970.38          | 975.38        | 5.00              |         | 28.84      |           |                      |                                 |                 | -50.00  | 89.56   | 65.06   | 2.72        |   |
| 02 Jan            | Rotating      | 21:44      | 21:50    | 0.10  | 975.38          | 979.32        | 3.94              | 15      | 39.55      | 32        | 3,282                | 2.89                            | 340             |         | 89.76   | 64.77   | 2.72        |   |
| 02 Jan            | Sliding       | 21:50      | 21:57    | 0.13  | 979.32          | 982.32        | 3.00              |         | 23.65      |           |                      |                                 |                 | 180.00  | 89.91   | 64.54   | 2.72        |   |
| 02 Jan            | Rotating      | 21:57      | 22:07    | 0.17  | 982.32          | 988.84        | 6.52              | 16      | 39.06      | 35        | 3,483                | 2.82                            | 342             |         | 90.09   | 64.89   | 1.83        |   |
| 02 Jan            | Sliding       | 22:07      | 22:17    | 0.16  | 988.84          | 993.84        | 5.00              |         | 30.53      |           |                      |                                 |                 | -70.00  | 90.17   | 65.17   | 1.73        |   |
| 02 Jan            | Rotating      | 22:17      | 22:26    | 0.15  | 993.84          | 997.90        | 4.06              | 16      | 27.08      | 30        | 3,329                | 2.92                            | 322             |         | 90.19   | 65.40   | 1.73        |   |
| 02 Jan            | Sliding       | 22:26      | 22:36    | 0.15  | 997.90          | 1,002.90      | 5.00              |         | 32.35      |           |                      |                                 |                 | 60.00   | 90.10   | 65.61   | 1.67        |   |
| 02 Jan            | Rotating      | 22:36      | 22:46    | 0.17  | 1,002.90        | 1,006.67      | 3.77              | 16      | 21.68      | 35        | 3,117                | 2.58                            | 319             |         | 89.90   | 65.67   | 1.67        |   |
| 02 Jan            | Sliding       | 22:46      | 22:53    | 0.12  | 1,006.67        | 1,009.67      | 3.00              |         | 24.85      |           |                      |                                 |                 | 90.00   | 89.74   | 65.71   | 1.67        |   |
| 02 Jan            | Rotating      | 22:53      | 23:02    | 0.14  | 1,009.67        | 1,016.60      | 6.93              | 16      | 50.17      | 37        | 3,272                | 2.81                            | 330             |         | 90.20   | 64.59   | 5.53        |   |
| 02 Jan            | Sliding       | 23:02      | 23:06    | 0.08  | 1,016.60        | 1,020.60      | 4.00              |         | 49.24      |           |                      |                                 |                 | 160.00  | 90.34   | 64.35   | 3.04        |   |
| 02 Jan            | Rotating      | 23:06      | 23:17    | 0.17  | 1,020.60        | 1,025.46      | 4.86              | 16      | 28.71      | 29        | 3,342                | 2.77                            | 319             |         | 90.25   | 64.83   | 3.04        |   |
| 02 Jan            | Sliding       | 23:17      | 23:25    | 0.13  | 1,025.46        | 1,030.46      | 5.00              |         | 37.71      |           |                      |                                 |                 | -50.00  | 90.17   | 65.01   | 0.96        |   |
| 02 Jan            | Rotating      | 23:25      | 23:33    | 0.14  | 1,030.46        | 1,034.47      | 4.01              | 16      | 28.32      | 30        | 3,001                | 2.71                            | 309             |         | 90.11   | 64.90   | 0.96        |   |



**End of Well Report for AA Pad, AA16**

| Drilling Records  |               |            |          |       |                 |               |                   |         |            |           |                      |                                 |                 |         |         |         |             | *Surveys are interpolated from actual surveys |  |
|-------------------|---------------|------------|----------|-------|-----------------|---------------|-------------------|---------|------------|-----------|----------------------|---------------------------------|-----------------|---------|---------|---------|-------------|---|--|
| Date              | Drilling Mode | Start Time | End Time | Hours | Start Depth (m) | End Depth (m) | Depth Drilled (m) | WOB (N) | ROP (m/hr) | RPM (RPM) | Surface Torque (N-m) | Flow Rate (m <sup>3</sup> /min) | Delta SPP (kPa) | TFO (°) | INC (°) | AZM (°) | DLS (°/30m) | Comment                                       |  |
| 02 Jan            | Sliding       | 23:33      | 23:43    | 0.17  | 1,034.47        | 1,039.47      | 5.00              |         | 30.19      |           |                      |                                 |                 | 130.00  | 90.14   | 64.65   | 2.20        |   |  |
| 02 Jan            | Rotating      | 23:43      | 23:53    | 0.16  | 1,039.47        | 1,043.50      | 4.03              | 16      | 25.20      | 31        | 3,048                | 2.53                            | 337             |         | 90.23   | 64.37   | 2.20        |   |  |
| 02 Jan            | Sliding       | 23:53      | 00:04    | 0.19  | 1,043.50        | 1,049.50      | 6.00              |         | 31.31      |           |                      |                                 |                 | -140.00 | 90.30   | 64.39   | 2.57        |   |  |
| 03 Jan            | Rotating      | 00:04      | 00:12    | 0.13  | 1,049.50        | 1,052.37      | 2.87              | 16      | 21.48      | 34        | 3,408                | 2.75                            | 303             |         | 90.29   | 64.63   | 2.57        |   |  |
| 03 Jan            | Sliding       | 00:12      | 00:22    | 0.17  | 1,052.37        | 1,058.37      | 6.00              |         | 36.29      |           |                      |                                 |                 | -70.00  | 90.14   | 65.05   | 2.15        |   |  |
| 03 Jan            | Rotating      | 00:22      | 00:27    | 0.09  | 1,058.37        | 1,062.19      | 3.82              | 15      | 44.18      | 36        | 3,093                | 2.98                            | 338             |         | 89.95   | 65.25   | 2.15        |   |  |
| 03 Jan            | Sliding       | 00:27      | 00:38    | 0.17  | 1,062.19        | 1,068.19      | 6.00              |         | 34.69      |           |                      |                                 |                 | 90.00   | 89.71   | 65.25   | 1.65        |   |  |
| 03 Jan            | Rotating      | 00:38      | 00:43    | 0.09  | 1,068.19        | 1,071.02      | 2.83              | 16      | 30.71      | 30        | 3,103                | 2.81                            | 338             |         | 89.62   | 65.13   | 1.65        |   |  |
| 03 Jan            | Sliding       | 00:43      | 00:52    | 0.14  | 1,071.02        | 1,076.02      | 5.00              |         | 34.57      |           |                      |                                 |                 | 140.00  | 89.71   | 64.96   | 2.72        |   |  |
| 03 Jan            | Rotating      | 00:52      | 01:02    | 0.17  | 1,076.02        | 1,080.46      | 4.44              | 16      | 25.54      | 37        | 3,219                | 2.59                            | 312             |         | 90.10   | 64.87   | 2.72        |   |  |
| 03 Jan            | Sliding       | 01:02      | 01:12    | 0.16  | 1,080.46        | 1,084.46      | 4.00              |         | 24.92      |           |                      |                                 |                 | -100.00 | 90.33   | 64.96   | 3.91        |   |  |
| 03 Jan            | Rotating      | 01:12      | 01:21    | 0.15  | 1,084.46        | 1,089.46      | 5.00              | 16      | 32.29      | 36        | 3,058                | 2.89                            | 307             |         | 90.24   | 65.60   | 3.91        |   |  |
| 03 Jan            | Sliding       | 01:21      | 01:28    | 0.11  | 1,089.46        | 1,094.46      | 5.00              |         | 45.16      |           |                      |                                 |                 | 0.00    | 90.17   | 65.91   | 0.41        |   |  |
| 03 Jan            | Rotating      | 01:28      | 01:38    | 0.17  | 1,094.46        | 1,098.84      | 4.38              | 16      | 25.23      | 35        | 3,365                | 2.93                            | 333             |         | 90.12   | 65.95   | 0.41        |   |  |
| 03 Jan            | Sliding       | 01:38      | 01:43    | 0.08  | 1,098.84        | 1,101.84      | 3.00              |         | 36.78      |           |                      |                                 |                 | 100.00  | 90.07   | 65.90   | 2.79        |   |  |
| 03 Jan            | Rotating      | 01:43      | 01:55    | 0.20  | 1,101.84        | 1,107.18      | 5.34              | 15      | 27.07      | 33        | 3,008                | 2.54                            | 311             |         | 89.89   | 65.43   | 2.79        |   |  |
| 03 Jan            | Sliding       | 01:55      | 02:04    | 0.15  | 1,107.18        | 1,112.18      | 5.00              |         | 33.34      |           |                      |                                 |                 | 120.00  | 89.71   | 65.16   | 1.32        |   |  |
| 03 Jan            | Rotating      | 02:04      | 02:12    | 0.13  | 1,112.18        | 1,116.52      | 4.34              | 15      | 34.05      | 35        | 3,483                | 2.70                            | 326             |         | 89.53   | 65.10   | 1.32        |   |  |
| 03 Jan            | Sliding       | 02:12      | 02:21    | 0.16  | 1,116.52        | 1,122.52      | 6.00              |         | 36.41      |           |                      |                                 |                 | -100.00 | 89.47   | 65.12   | 0.72        |   |  |
| 03 Jan            | Rotating      | 02:21      | 02:29    | 0.12  | 1,122.52        | 1,125.53      | 3.01              | 15      | 25.32      | 36        | 3,408                | 2.98                            | 326             |         | 89.52   | 65.18   | 0.72        |   |  |
| 03 Jan            | Sliding       | 02:29      | 02:38    | 0.16  | 1,125.53        | 1,130.53      | 5.00              |         | 31.57      |           |                      |                                 |                 | -170.00 | 89.57   | 65.00   | 3.53        |   |  |
| 03 Jan            | Rotating      | 02:38      | 02:48    | 0.17  | 1,130.53        | 1,134.72      | 4.19              | 16      | 25.00      | 34        | 3,028                | 2.60                            | 320             |         | 89.57   | 64.51   | 3.53        |   |  |
| 03 Jan            | Sliding       | 02:48      | 02:55    | 0.12  | 1,134.72        | 1,137.72      | 3.00              |         | 25.70      |           |                      |                                 |                 | 70.00   | 89.57   | 64.18   | 1.31        |   |  |
| 03 Jan            | Rotating      | 02:55      | 03:04    | 0.14  | 1,137.72        | 1,144.09      | 6.37              | 16      | 45.12      | 31        | 3,211                | 2.90                            | 330             |         | 89.82   | 64.32   | 1.31        |   |  |
| 03 Jan            | Sliding       | 03:04      | 03:14    | 0.18  | 1,144.09        | 1,149.09      | 5.00              |         | 27.74      |           |                      |                                 |                 | -110.00 | 89.88   | 64.42   | 0.69        |   |  |
| 03 Jan            | Rotating      | 03:14      | 03:23    | 0.14  | 1,149.09        | 1,153.04      | 3.95              | 16      | 28.39      | 33        | 3,474                | 2.62                            | 348             |         | 89.84   | 64.50   | 0.69        |   |  |
| 03 Jan            | Sliding       | 03:23      | 03:28    | 0.09  | 1,153.04        | 1,156.04      | 3.00              |         | 34.67      |           |                      |                                 |                 | 40.00   | 89.81   | 64.56   | 0.69        |   |  |
| 03 Jan            | Rotating      | 03:28      | 03:38    | 0.17  | 1,156.04        | 1,162.06      | 6.02              | 16      | 36.01      | 33        | 3,123                | 2.87                            | 323             |         | 89.62   | 64.24   | 1.97        |   |  |
| 03 Jan            | Sliding       | 03:38      | 03:43    | 0.09  | 1,162.06        | 1,167.06      | 5.00              |         | 55.97      |           |                      |                                 |                 | 150.00  | 89.53   | 64.08   | 1.05        |   |  |
| 03 Jan            | Rotating      | 03:43      | 03:55    | 0.19  | 1,167.06        | 1,171.75      | 4.69              | 15      | 25.07      | 35        | 3,064                | 2.51                            | 328             |         | 89.62   | 64.22   | 1.05        |   |  |
| 03 Jan            | Sliding       | 03:55      | 04:02    | 0.13  | 1,171.75        | 1,177.75      | 6.00              |         | 47.31      |           |                      |                                 |                 | -100.00 | 89.80   | 64.49   | 2.06        |   |  |
| 03 Jan            | Rotating      | 04:02      | 04:10    | 0.13  | 1,177.75        | 1,181.02      | 3.27              | 16      | 25.50      | 34        | 3,142                | 2.75                            | 323             |         | 89.93   | 64.67   | 2.06        |   |  |
| 03 Jan            | Sliding       | 04:10      | 04:18    | 0.13  | 1,181.02        | 1,186.02      | 5.00              |         | 37.35      |           |                      |                                 |                 | 50.00   | 90.09   | 64.90   | 1.18        |   |  |
| 03 Jan            | Rotating      | 04:18      | 04:27    | 0.15  | 1,186.02        | 1,190.05      | 4.03              | 15      | 27.16      | 37        | 3,329                | 2.88                            | 331             |         | 90.19   | 65.03   | 1.18        |   |  |
| 03 Jan            | Sliding       | 04:27      | 04:35    | 0.14  | 1,190.05        | 1,195.05      | 5.00              |         | 36.96      |           |                      |                                 |                 | -80.00  | 90.15   | 65.10   | 1.14        |   |  |
| 03 Jan            | Rotating      | 04:35      | 04:43    | 0.14  | 1,195.05        | 1,199.49      | 4.44              | 15      | 31.64      | 32        | 3,220                | 2.85                            | 336             |         | 89.98   | 65.11   | 1.14        |   |  |
| 03 Jan            | Sliding       | 04:43      | 04:50    | 0.11  | 1,199.49        | 1,205.49      | 6.00              |         | 52.94      |           |                      |                                 |                 | 40.00   | 90.10   | 64.58   | 4.47        |   |  |
| 03 Jan            | Rotating      | 04:50      | 05:00    | 0.16  | 1,205.49        | 1,207.89      | 2.40              | 15      | 14.61      | 32        | 3,037                | 2.73                            | 338             |         | 90.23   | 64.25   | 4.47        |   |  |
| 03 Jan            | Sliding       | 05:00      | 05:11    | 0.18  | 1,207.89        | 1,212.89      | 5.00              |         | 27.41      |           |                      |                                 |                 | -150.00 | 90.08   | 64.39   | 2.96        |   |  |
| 03 Jan            | Rotating      | 05:11      | 05:15    | 0.07  | 1,212.89        | 1,217.15      | 4.26              | 15      | 57.94      | 29        | 3,124                | 2.70                            | 345             |         | 89.83   | 64.73   | 2.96        |   |  |
| <b>MWD Run #4</b> |               |            |          |       |                 |               |                   |         |            |           |                      |                                 |                 |         |         |         |             |   |  |
| 03 Jan            | Sliding       | 11:45      | 11:59    | 0.23  | 1,217.15        | 1,222.15      | 5.00              |         | 21.50      |           |                      |                                 |                 | -60.00  | 89.75   | 64.50   | 2.33        |   |  |
| 03 Jan            | Rotating      | 11:59      | 12:06    | 0.11  | 1,222.15        | 1,226.07      | 3.92              | 16      | 36.37      | 29        | 3,450                | 2.83                            | 336             |         | 89.73   | 64.20   | 2.33        |   |  |
| 03 Jan            | Sliding       | 12:06      | 12:14    | 0.14  | 1,226.07        | 1,231.07      | 5.00              |         | 36.84      |           |                      |                                 |                 | 120.00  | 89.91   | 64.33   | 2.09        |   |  |
| 03 Jan            | Rotating      | 12:14      | 12:22    | 0.14  | 1,231.07        | 1,235.13      | 4.06              | 16      | 29.48      | 37        | 3,435                | 2.97                            | 331             |         | 90.10   | 64.54   | 2.09        |   |  |
| 03 Jan            | Sliding       | 12:22      | 12:28    | 0.09  | 1,235.13        | 1,241.13      | 6.00              |         | 64.54      |           |                      |                                 |                 | -90.00  | 89.91   | 64.89   | 2.57        |   |  |
| 03 Jan            | Rotating      | 12:28      | 12:41    | 0.23  | 1,241.13        | 1,244.07      | 2.94              | 16      | 13.06      | 33        | 3,380                | 2.83                            | 332             |         | 89.74   | 65.08   | 2.57        |   |  |
| 03 Jan            | Sliding       | 12:41      | 12:52    | 0.18  | 1,244.07        | 1,248.07      | 4.00              |         | 21.81      |           |                      |                                 |                 | 30.00   | 89.67   | 65.17   | 0.98        |   |  |
| 03 Jan            | Rotating      | 12:52      | 13:02    | 0.16  | 1,248.07        | 1,253.77      | 5.70              | 16      | 35.62      | 37        | 3,293                | 2.64                            | 331             |         | 89.82   | 65.06   | 0.98        |   |  |
| 03 Jan            | Sliding       | 13:02      | 13:08    | 0.11  | 1,253.77        | 1,257.77      | 4.00              |         | 37.61      |           |                      |                                 |                 | 120.00  | 89.78   | 65.09   | 0.91        |   |  |
| 03 Jan            | Rotating      | 13:08      | 13:22    | 0.24  | 1,257.77        | 1,263.15      | 5.38              | 16      | 22.68      | 33        | 3,310                | 2.77                            | 334             |         | 89.65   | 65.18   | 0.91        |   |  |
| 03 Jan            | Sliding       | 13:22      | 13:29    | 0.11  | 1,263.15        | 1,269.15      | 6.00              |         | 53.58      |           |                      |                                 |                 | -50.00  | 90.00   | 64.89   | 2.55        |   |  |
| 03 Jan            | Rotating      | 13:29      | 13:43    | 0.23  | 1,269.15        | 1,271.90      | 2.75              | 15      | 12.18      | 36        | 3,191                | 2.68                            | 307             |         | 90.18   | 64.74   | 2.55        |   |  |
| 03 Jan            | Sliding       | 13:43      | 13:50    | 0.12  | 1,271.90        | 1,274.90      | 3.00              |         | 25.36      |           |                      |                                 |                 | 140.00  | 90.23   | 64.85   | 4.06        |   |  |
| 03 Jan            | Rotating      | 13:50      | 13:59    | 0.15  | 1,274.90        | 1,280.61      | 5.71              | 15      | 37.65      | 36        | 3,320                | 2.98                            | 331             |         | 90.06   | 65.61   | 4.06        |   |  |
| 03 Jan            | Sliding       | 13:59      | 14:10    | 0.18  | 1,280.61        | 1,285.61      | 5.00              |         | 27.28      |           |                      |                                 |                 | -70.00  | 89.92   | 65.72   | 1.19        |   |  |
| 03 Jan            | Rotating      | 14:10      | 14:18    | 0.13  | 1,285.61        | 1,290.43      | 4.82              | 16      | 38.20      | 34        | 3,207                | 2.90                            | 348             |         | 89.80   | 65.57   | 1.19        |   |  |
| 03 Jan            | Sliding       | 14:18      | 14:23    | 0.10  | 1,290.43        | 1,295.43      | 5.00              |         | 52.35      |           |                      |                                 |                 | 120.00  | 89.78   | 65.37   | 1.27        |   |  |
| 03 Jan            | Rotating      | 14:23      | 14:33    | 0.15  | 1,295.43        | 1,299.22      | 3.79              | 16      | 24.47      | 33        | 3,487                | 2.79                            | 312             |         | 89.79   | 65.21   | 1.27        |   |  |
| 03 Jan            | Sliding       | 14:33      | 14:44    | 0.19  | 1,299.22        | 1,303.22      | 4.00              |         | 21.10      |           |                      |                                 |                 | -140.00 | 89.93   | 65.07   | 1.87        |   |  |
| 03 Jan            | Rotating      | 14:44      | 14:49    | 0.09  | 1,303.22        | 1,308.43      | 5.21              | 16      | 59.31      | 32        | 3,167                | 2.55                            | 306             |         | 90.21   | 64.90   | 1.87        |   |  |

**End of Well Report for AA Pad, AA16**

| Drilling Records |               |            |          |       |                 |               |                   |         |            |           |                      |                                 |                 |         |         |         |             | *Surveys are interpolated from actual surveys |  |
|------------------|---------------|------------|----------|-------|-----------------|---------------|-------------------|---------|------------|-----------|----------------------|---------------------------------|-----------------|---------|---------|---------|-------------|---|--|
| Date             | Drilling Mode | Start Time | End Time | Hours | Start Depth (m) | End Depth (m) | Depth Drilled (m) | WOB (N) | ROP (m/hr) | RPM (RPM) | Surface Torque (N-m) | Flow Rate (m <sup>3</sup> /min) | Delta SPP (kPa) | TFO (°) | INC (°) | AZM (°) | DLS (°/30m) | Comment                                       |  |
| 03 Jan           | Sliding       | 14:49      | 14:58    | 0.15  | 1,308.43        | 1,311.43      | 3.00              |         | 20.63      |           |                      |                                 |                 | -120.00 | 90.20   | 64.99   | 2.14        |   |  |
| 03 Jan           | Rotating      | 14:58      | 15:05    | 0.11  | 1,311.43        | 1,317.61      | 6.18              | 16      | 55.35      | 35        | 3,289                | 2.76                            | 322             |         | 90.02   | 65.39   | 2.14        |   |  |
| 03 Jan           | Sliding       | 15:05      | 15:11    | 0.11  | 1,317.61        | 1,321.61      | 4.00              |         | 35.88      |           |                      |                                 |                 | -30.00  | 90.10   | 65.10   | 4.00        |   |  |
| 03 Jan           | Rotating      | 15:11      | 15:22    | 0.18  | 1,321.61        | 1,326.48      | 4.87              | 16      | 26.79      | 37        | 3,335                | 2.58                            | 319             |         | 90.29   | 64.48   | 4.00        |   |  |
| 03 Jan           | Sliding       | 15:22      | 15:31    | 0.15  | 1,326.48        | 1,330.48      | 4.00              |         | 27.50      |           |                      |                                 |                 | 140.00  | 90.21   | 64.27   | 1.44        |   |  |
| 03 Jan           | Rotating      | 15:31      | 15:38    | 0.11  | 1,330.48        | 1,335.75      | 5.27              | 15      | 47.33      | 38        | 3,477                | 2.77                            | 322             |         | 89.98   | 64.15   | 1.44        |   |  |
| 03 Jan           | Sliding       | 15:38      | 15:52    | 0.24  | 1,335.75        | 1,339.75      | 4.00              |         | 16.91      |           |                      |                                 |                 | -90.00  | 89.86   | 64.22   | 1.42        |   |  |
| 03 Jan           | Rotating      | 15:52      | 15:58    | 0.11  | 1,339.75        | 1,344.67      | 4.92              | 15      | 46.06      | 37        | 3,015                | 2.72                            | 317             |         | 89.76   | 64.43   | 1.42        |   |  |
| 03 Jan           | Sliding       | 15:58      | 16:05    | 0.12  | 1,344.67        | 1,347.67      | 3.00              |         | 25.10      |           |                      |                                 |                 | -120.00 | 89.82   | 64.66   | 3.52        |   |  |
| 03 Jan           | Rotating      | 16:05      | 16:15    | 0.15  | 1,347.67        | 1,354.31      | 6.64              | 15      | 43.11      | 37        | 3,374                | 2.95                            | 304             |         | 90.18   | 65.35   | 3.52        |   |  |
| 03 Jan           | Sliding       | 16:15      | 16:26    | 0.18  | 1,354.31        | 1,358.31      | 4.00              |         | 21.82      |           |                      |                                 |                 | 130.00  | 90.10   | 65.63   | 2.60        |   |  |
| 03 Jan           | Rotating      | 16:26      | 16:32    | 0.11  | 1,358.31        | 1,363.04      | 4.73              | 15      | 43.03      | 35        | 3,100                | 2.61                            | 344             |         | 89.75   | 65.85   | 2.60        |   |  |
| 03 Jan           | Sliding       | 16:32      | 16:44    | 0.19  | 1,363.04        | 1,367.04      | 4.00              |         | 21.15      |           |                      |                                 |                 | 60.00   | 89.66   | 65.55   | 3.83        |   |  |
| 03 Jan           | Rotating      | 16:44      | 16:49    | 0.08  | 1,367.04        | 1,372.95      | 5.91              | 16      | 70.49      | 29        | 3,369                | 2.95                            | 312             |         | 89.66   | 64.79   | 3.83        |   |  |
| 03 Jan           | Sliding       | 16:49      | 17:02    | 0.22  | 1,372.95        | 1,376.95      | 4.00              |         | 18.40      |           |                      |                                 |                 | 140.00  | 89.63   | 64.93   | 2.28        |   |  |
| 03 Jan           | Rotating      | 17:02      | 17:07    | 0.09  | 1,376.95        | 1,381.27      | 4.32              | 16      | 47.39      | 29        | 3,479                | 2.88                            | 345             |         | 89.59   | 65.26   | 2.28        |   |  |
| 03 Jan           | Sliding       | 17:07      | 17:14    | 0.11  | 1,381.27        | 1,384.27      | 3.00              |         | 26.75      |           |                      |                                 |                 | -80.00  | 89.61   | 65.40   | 0.84        |   |  |
| 03 Jan           | Rotating      | 17:14      | 17:26    | 0.21  | 1,384.27        | 1,390.76      | 6.49              | 16      | 31.13      | 38        | 3,355                | 2.91                            | 343             |         | 89.72   | 65.55   | 0.84        |   |  |
| 03 Jan           | Sliding       | 17:26      | 17:32    | 0.10  | 1,390.76        | 1,394.76      | 4.00              |         | 39.59      |           |                      |                                 |                 | 100.00  | 89.66   | 65.20   | 5.15        |   |  |
| 03 Jan           | Rotating      | 17:32      | 17:44    | 0.18  | 1,394.76        | 1,399.74      | 4.98              | 15      | 26.95      | 31        | 3,413                | 2.69                            | 347             |         | 89.47   | 64.37   | 5.15        |   |  |
| 03 Jan           | Sliding       | 17:44      | 17:53    | 0.16  | 1,399.74        | 1,403.74      | 4.00              |         | 25.75      |           |                      |                                 |                 | 50.00   | 89.59   | 64.46   | 5.84        |   |  |
| 03 Jan           | Rotating      | 17:53      | 18:04    | 0.19  | 1,403.74        | 1,409.49      | 5.75              | 15      | 30.78      | 38        | 3,035                | 2.61                            | 319             |         | 90.08   | 65.47   | 5.84        |   |  |
| 03 Jan           | Sliding       | 18:04      | 18:08    | 0.07  | 1,409.49        | 1,412.49      | 3.00              |         | 42.81      |           |                      |                                 |                 | -110.00 | 90.17   | 65.44   | 1.98        |   |  |
| 03 Jan           | Rotating      | 18:08      | 18:21    | 0.21  | 1,412.49        | 1,418.52      | 6.03              | 15      | 28.84      | 32        | 3,026                | 2.97                            | 349             |         | 90.23   | 65.05   | 1.98        |   |  |
| 03 Jan           | Sliding       | 18:21      | 18:33    | 0.21  | 1,418.52        | 1,422.52      | 4.00              |         | 19.25      |           |                      |                                 |                 | 70.00   | 90.06   | 64.79   | 2.71        |   |  |
| 03 Jan           | Rotating      | 18:33      | 18:39    | 0.09  | 1,422.52        | 1,427.19      | 4.67              | 16      | 50.47      | 31        | 3,007                | 2.88                            | 332             |         | 89.76   | 64.49   | 2.71        |   |  |
| 03 Jan           | Sliding       | 18:39      | 18:46    | 0.12  | 1,427.19        | 1,433.19      | 6.00              |         | 51.46      |           |                      |                                 |                 | -90.00  | 89.90   | 64.83   | 3.00        |   |  |
| 03 Jan           | Rotating      | 18:46      | 18:59    | 0.22  | 1,433.19        | 1,436.74      | 3.55              | 16      | 16.32      | 31        | 3,222                | 2.54                            | 328             |         | 90.07   | 65.14   | 3.00        |   |  |
| 03 Jan           | Sliding       | 18:59      | 19:07    | 0.14  | 1,436.74        | 1,439.74      | 3.00              |         | 21.41      |           |                      |                                 |                 | -150.00 | 90.03   | 65.36   | 2.25        |   |  |
| 03 Jan           | Rotating      | 19:07      | 19:19    | 0.19  | 1,439.74        | 1,445.48      | 5.74              | 15      | 29.57      | 34        | 3,038                | 2.79                            | 310             |         | 89.84   | 65.75   | 2.25        |   |  |
| 03 Jan           | Sliding       | 19:19      | 19:31    | 0.20  | 1,445.48        | 1,448.48      | 3.00              |         | 14.83      |           |                      |                                 |                 | 90.00   | 89.89   | 65.83   | 1.31        |   |  |
| 03 Jan           | Rotating      | 19:31      | 19:36    | 0.08  | 1,448.48        | 1,454.46      | 5.98              | 16      | 78.02      | 34        | 3,452                | 2.60                            | 313             |         | 90.15   | 65.88   | 1.31        |   |  |
| 03 Jan           | Sliding       | 20:15      | 20:24    | 0.14  | 1,454.46        | 1,458.46      | 4.00              |         | 27.83      |           |                      |                                 |                 | 130.00  | 90.19   | 65.74   | 1.83        |   |  |
| 03 Jan           | Rotating      | 20:24      | 20:36    | 0.20  | 1,458.46        | 1,463.55      | 5.09              | 16      | 25.75      | 36        | 3,055                | 2.53                            | 308             |         | 90.16   | 65.43   | 1.83        |   |  |
| 03 Jan           | Sliding       | 20:36      | 20:40    | 0.07  | 1,463.55        | 1,469.55      | 6.00              |         | 91.51      |           |                      |                                 |                 | 20.00   | 90.00   | 64.73   | 4.55        |   |  |
| 03 Jan           | Rotating      | 20:40      | 20:52    | 0.19  | 1,469.55        | 1,472.99      | 3.44              | 16      | 17.65      | 35        | 3,077                | 2.93                            | 341             |         | 89.88   | 64.22   | 4.55        |   |  |
| 03 Jan           | Sliding       | 20:52      | 20:57    | 0.09  | 1,472.99        | 1,475.99      | 3.00              |         | 34.11      |           |                      |                                 |                 | -110.00 | 89.77   | 64.18   | 2.88        |   |  |
| 03 Jan           | Rotating      | 20:57      | 21:07    | 0.17  | 1,475.99        | 1,482.61      | 6.62              | 16      | 37.90      | 33        | 3,487                | 2.69                            | 326             |         | 89.51   | 64.76   | 2.88        |   |  |
| 03 Jan           | Sliding       | 21:07      | 21:13    | 0.09  | 1,482.61        | 1,488.61      | 6.00              |         | 65.08      |           |                      |                                 |                 | -120.00 | 89.66   | 65.16   | 2.21        |   |  |
| 03 Jan           | Rotating      | 21:13      | 21:25    | 0.20  | 1,488.61        | 1,491.27      | 2.66              | 15      | 13.43      | 31        | 3,237                | 2.78                            | 334             |         | 89.76   | 65.33   | 2.21        |   |  |
| 03 Jan           | Sliding       | 21:25      | 21:32    | 0.12  | 1,491.27        | 1,495.27      | 4.00              |         | 32.20      |           |                      |                                 |                 | 120.00  | 89.79   | 64.89   | 6.43        |   |  |
| 03 Jan           | Rotating      | 21:32      | 21:42    | 0.17  | 1,495.27        | 1,500.36      | 5.09              | 16      | 29.76      | 32        | 3,031                | 2.99                            | 306             |         | 89.75   | 63.80   | 6.43        |   |  |
| 03 Jan           | Sliding       | 21:42      | 21:50    | 0.12  | 1,500.36        | 1,506.36      | 6.00              |         | 48.12      |           |                      |                                 |                 | 50.00   | 89.93   | 64.48   | 6.25        |   |  |
| 03 Jan           | Rotating      | 21:50      | 21:58    | 0.13  | 1,506.36        | 1,509.75      | 3.39              | 16      | 26.09      | 32        | 3,201                | 2.75                            | 344             |         | 90.06   | 65.17   | 6.25        |   |  |
| 03 Jan           | Sliding       | 21:58      | 22:06    | 0.13  | 1,509.75        | 1,514.75      | 5.00              |         | 37.35      |           |                      |                                 |                 | -120.00 | 89.94   | 64.64   | 6.12        |   |  |
| 03 Jan           | Rotating      | 22:06      | 22:14    | 0.14  | 1,514.75        | 1,518.67      | 3.92              | 15      | 28.74      | 31        | 3,200                | 2.60                            | 313             |         | 89.76   | 63.86   | 6.12        |   |  |
| 03 Jan           | Sliding       | 22:14      | 22:23    | 0.14  | 1,518.67        | 1,522.67      | 4.00              |         | 27.86      |           |                      |                                 |                 | 80.00   | 89.86   | 63.78   | 2.05        |   |  |
| 03 Jan           | Rotating      | 22:23      | 22:30    | 0.13  | 1,522.67        | 1,527.91      | 5.24              | 16      | 41.71      | 30        | 3,109                | 2.72                            | 342             |         | 90.13   | 64.02   | 2.05        |   |  |
| 03 Jan           | Sliding       | 22:30      | 22:36    | 0.10  | 1,527.91        | 1,533.91      | 6.00              |         | 60.95      |           |                      |                                 |                 | -90.00  | 89.87   | 64.38   | 2.93        |   |  |
| 03 Jan           | Rotating      | 22:36      | 22:48    | 0.20  | 1,533.91        | 1,536.76      | 2.85              | 16      | 13.91      | 32        | 3,134                | 2.91                            | 318             |         | 89.66   | 64.57   | 2.93        |   |  |
| 03 Jan           | Sliding       | 22:48      | 23:03    | 0.25  | 1,536.76        | 1,540.76      | 4.00              |         | 16.01      |           |                      |                                 |                 | 60.00   | 89.67   | 64.78   | 1.93        |   |  |
| 03 Jan           | Rotating      | 23:03      | 23:09    | 0.10  | 1,540.76        | 1,546.35      | 5.59              | 15      | 55.98      | 33        | 3,104                | 2.59                            | 347             |         | 89.92   | 65.04   | 1.93        |   |  |
| 03 Jan           | Sliding       | 23:09      | 23:22    | 0.21  | 1,546.35        | 1,551.35      | 5.00              |         | 23.93      |           |                      |                                 |                 | 120.00  | 90.13   | 64.54   | 5.33        |   |  |
| 03 Jan           | Rotating      | 23:22      | 23:28    | 0.10  | 1,551.35        | 1,555.23      | 3.88              | 15      | 38.36      | 34        | 3,474                | 2.81                            | 341             |         | 90.29   | 63.87   | 5.33        |   |  |
| 03 Jan           | Sliding       | 23:28      | 23:36    | 0.13  | 1,555.23        | 1,559.23      | 4.00              |         | 31.27      |           |                      |                                 |                 | 40.00   | 90.18   | 63.59   | 2.30        |   |  |
| 03 Jan           | Rotating      | 23:36      | 23:46    | 0.17  | 1,559.23        | 1,565.03      | 5.80              | 16      | 33.91      | 36        | 3,020                | 2.78                            | 327             |         | 89.73   | 63.61   | 2.30        |   |  |
| 03 Jan           | Sliding       | 23:46      | 23:58    | 0.21  | 1,565.03        | 1,570.03      | 5.00              |         | 23.89      |           |                      |                                 |                 | -60.00  | 89.93   | 64.03   | 3.97        |   |  |
| 03 Jan           | Rotating      | 23:58      | 00:03    | 0.08  | 1,570.03        | 1,573.91      | 3.88              | 16      | 48.98      | 31        | 3,109                | 2.94                            | 325             |         | 90.22   | 64.45   | 3.97        |   |  |
| 04 Jan           | Sliding       | 00:03      | 00:13    | 0.16  | 1,573.91        | 1,579.91      | 6.00              |         | 36.54      |           |                      |                                 |                 | 180.00  | 89.92   | 64.37   | 3.39        |   |  |

**End of Well Report for AA Pad, AA16**

| Drilling Records |               |            |          |       |                 |               |                   |         |            |           |                      |                                 |                 |         |         |         |             | *Surveys are interpolated from actual surveys |
|------------------|---------------|------------|----------|-------|-----------------|---------------|-------------------|---------|------------|-----------|----------------------|---------------------------------|-----------------|---------|---------|---------|-------------|---|
| Date             | Drilling Mode | Start Time | End Time | Hours | Start Depth (m) | End Depth (m) | Depth Drilled (m) | WOB (N) | ROP (m/hr) | RPM (RPM) | Surface Torque (N-m) | Flow Rate (m <sup>3</sup> /min) | Delta SPP (kPa) | TFO (°) | INC (°) | AZM (°) | DLS (°/30m) | Comment                                       |
| 04 Jan           | Rotating      | 00:13      | 00:19    | 0.10  | 1,579.91        | 1,583.22      | 3.31              | 16      | 32.68      | 34        | 3,213                | 2.73                            | 324             |         |         |         |             |   |
| 04 Jan           | Sliding       | 00:19      | 00:28    | 0.16  | 1,583.22        | 1,587.22      | 4.00              |         | 25.58      |           |                      |                                 |                 | 30.00   | 89.80   | 64.20   | 2.86        |   |
| 04 Jan           | Rotating      | 00:28      | 00:39    | 0.18  | 1,587.22        | 1,592.55      | 5.33              | 16      | 29.10      | 30        | 3,107                | 2.88                            | 349             |         | 90.30   | 64.31   | 2.86        |   |
| 04 Jan           | Sliding       | 00:39      | 00:55    | 0.25  | 1,592.55        | 1,597.55      | 5.00              |         | 19.82      |           |                      |                                 |                 | -130.00 | 90.22   | 64.42   | 1.39        |   |
| 04 Jan           | Rotating      | 00:55      | 01:00    | 0.09  | 1,597.55        | 1,601.10      | 3.55              | 15      | 38.06      | 33        | 3,193                | 2.77                            | 339             |         | 90.08   | 64.50   | 1.39        |   |
| 04 Jan           | Sliding       | 01:00      | 01:11    | 0.18  | 1,601.10        | 1,606.10      | 5.00              |         | 27.45      |           |                      |                                 |                 | 40.00   | 90.02   | 64.70   | 1.39        |   |
| 04 Jan           | Rotating      | 01:11      | 01:21    | 0.16  | 1,606.10        | 1,610.46      | 4.36              | 16      | 27.06      | 35        | 3,495                | 2.88                            | 342             |         | 90.00   | 64.90   | 1.39        |   |
| 04 Jan           | Sliding       | 01:21      | 01:32    | 0.19  | 1,610.46        | 1,614.46      | 4.00              |         | 21.33      |           |                      |                                 |                 | 130.00  | 90.09   | 64.80   | 2.16        |   |
| 04 Jan           | Rotating      | 01:32      | 01:40    | 0.13  | 1,614.46        | 1,619.15      | 4.69              | 15      | 36.11      | 35        | 3,163                | 2.85                            | 323             |         | 90.25   | 64.51   | 2.16        |   |
| 04 Jan           | Sliding       | 01:40      | 01:44    | 0.07  | 1,619.15        | 1,624.15      | 5.00              |         | 68.16      |           |                      |                                 |                 | 70.00   | 90.19   | 64.31   | 1.29        |   |
| 04 Jan           | Rotating      | 01:44      | 01:56    | 0.20  | 1,624.15        | 1,628.85      | 4.70              | 15      | 22.99      | 29        | 3,474                | 2.91                            | 305             |         | 90.03   | 64.19   | 1.29        |   |
| 04 Jan           | Sliding       | 01:56      | 02:05    | 0.14  | 1,628.85        | 1,632.85      | 4.00              |         | 29.19      |           |                      |                                 |                 | -70.00  | 89.88   | 64.00   | 2.16        |   |
| 04 Jan           | Rotating      | 02:05      | 02:12    | 0.12  | 1,632.85        | 1,637.78      | 4.93              | 16      | 40.38      | 31        | 3,327                | 2.93                            | 328             |         | 89.68   | 63.71   | 2.16        |   |
| 04 Jan           | Sliding       | 02:12      | 02:21    | 0.16  | 1,637.78        | 1,643.78      | 6.00              |         | 38.22      |           |                      |                                 |                 | -130.00 | 89.65   | 63.65   | 2.16        |   |
| 04 Jan           | Rotating      | 02:21      | 02:31    | 0.16  | 1,643.78        | 1,647.48      | 3.70              | 15      | 22.53      | 33        | 3,248                | 2.91                            | 340             |         | 89.65   | 63.65   | 2.16        |   |
| 04 Jan           | Sliding       | 02:31      | 02:44    | 0.22  | 1,647.48        | 1,653.48      | 6.00              |         | 27.66      |           |                      |                                 |                 | -100.00 | 89.65   | 63.65   | 2.16        |   |
| 04 Jan           | Rotating      | 02:44      | 02:52    | 0.12  | 1,653.48        | 1,655.78      | 2.30              | 16      | 18.42      | 30        | 3,481                | 2.89                            | 309             |         | 89.65   | 63.65   | 2.16        |   |

| Slide Sheet       |                  |           |                    |                    |                     |                     |                    |                  |                   |                |                      |                    |                  |                     |                   |      |       |      |
|-------------------|------------------|-----------|--------------------|--------------------|---------------------|---------------------|--------------------|------------------|-------------------|----------------|----------------------|--------------------|------------------|---------------------|-------------------|------|-------|------|
| Bit Depth (m)     | Survey Depth (m) | Incl. (°) | (Grid) Azimuth (°) | Vertical Depth (m) | Dogleg Rate (°/30m) | Calc'd Toolface (°) | Build Rate (°/30m) | Build Seen (°/m) | Turn Rate (°/30m) | Slide Seen (m) | Motor Output (°/30m) | Motor Output (°/m) | Slide Length (m) | Toolface Orient (°) | Rotate Length (m) |      |       |      |
| 0.00              | 0.00             | 0.00      | 0.00               | 0.00               | 0.00                | 0.00                | 0.00               |                  |                   |                |                      |                    |                  |                     |                   |      | 9.11  |      |
| <b>MWD Run #1</b> |                  |           |                    |                    |                     |                     |                    |                  |                   |                |                      |                    |                  |                     |                   |      |       |      |
| 18.14             | 2.14             | 0.16      | 85.07              | 2.14               | 2.25                | 85.07               | 2.25               |                  |                   |                |                      |                    |                  |                     |                   | 5.00 | 60.00 | 4.03 |
| 27.00             | 11.00            | 0.22      | 120.07             | 11.00              | 0.43                | 80.99               | 0.20               |                  | 118.53            |                |                      |                    |                  |                     |                   | 4.00 | 60.00 | 4.86 |
| 36.32             | 20.32            | 0.17      | 210.70             | 20.32              | 0.90                | 142.15              | -0.15              | -0.01            | 291.73            | 5.29           | 1.59                 | 0.05               | 5.00             | 150.00              | 4.32              |      |       |      |
| 45.29             | 29.29            | 0.22      | 129.57             | 29.29              | 0.87                | -122.23             | 0.17               | 0.01             | -271.22           | 4.11           | 1.89                 | 0.06               | 5.00             | -90.00              | 3.97              |      |       |      |
| 54.49             | 38.49            | 0.50      | 99.70              | 38.49              | 1.06                | -49.83              | 0.90               | 0.06             | -97.40            | 4.88           | 1.99                 | 0.07               | 4.00             | -30.00              | 5.20              |      |       |      |
| 63.35             | 47.35            | 0.16      | 271.07             | 47.35              | 2.22                | 177.90              | -1.14              | -0.07            | 580.25            | 4.89           | 4.02                 | 0.13               | 3.00             | 150.00              | 5.86              |      |       |      |
| 72.52             | 56.52            | 0.00      | 285.70             | 56.52              | 0.51                | 179.55              | -0.51              | -0.04            | 47.89             | 3.96           | 1.18                 | 0.04               | 5.00             | 160.00              | 4.16              |      |       |      |
| 82.14             | 66.14            | 0.09      | 77.62              | 66.14              | 0.28                | 153.34              | 0.26               | 0.02             | 473.63            | 3.76           | 0.73                 | 0.02               | 5.00             | 180.00              | 4.62              |      |       |      |
| 90.53             | 74.53            | 0.20      | 96.45              | 74.53              | 0.42                | 32.80               | 0.39               | 0.03             | 67.34             | 4.23           | 0.83                 | 0.03               | 6.00             | 0.00                | 2.39              |      |       |      |
| 100.42            | 84.42            | 0.32      | 254.18             | 84.42              | 1.54                | 166.12              | 0.38               | 0.02             | 478.13            | 5.27           | 2.88                 | 0.10               | 3.00             | 160.00              | 6.90              |      |       |      |
| 109.63            | 93.63            | 0.08      | 200.31             | 93.63              | 0.92                | -167.26             | -0.79              | -0.04            | -175.58           | 6.71           | 1.26                 | 0.04               | 4.00             | 180.00              | 5.20              |      |       |      |
| 118.67            | 102.67           | 0.04      | 237.93             | 102.67             | 0.17                | 148.42              | -0.11              | -0.02            | 124.78            | 2.25           | 0.67                 | 0.02               | 5.00             | 170.00              | 4.04              |      |       |      |
| 127.16            | 111.16           | 0.31      | 263.01             | 111.16             | 0.98                | 28.88               | 0.96               | 0.08             | 88.65             | 3.28           | 2.52                 | 0.08               | 3.00             | 40.00               | 5.49              |      |       |      |
| 136.68            | 120.68           | 0.04      | 187.97             | 120.68             | 0.97                | -172.59             | -0.86              | -0.05            | -236.50           | 5.47           | 1.68                 | 0.06               | 5.00             | -150.00             | 4.52              |      |       |      |
| 146.28            | 130.28           | 0.07      | 34.51              | 130.28             | 0.35                | -162.97             | 0.10               | 0.01             | -479.63           | 4.11           | 0.81                 | 0.03               | 5.00             | -160.00             | 4.60              |      |       |      |
| 155.35            | 139.35           | 0.01      | 172.63             | 139.35             | 0.26                | 175.63              | -0.21              | -0.01            | 456.45            | 4.56           | 0.52                 | 0.02               | 4.00             | -170.00             | 5.08              |      |       |      |
| 164.09            | 148.09           | 0.27      | 203.05             | 148.09             | 0.91                | 31.42               | 0.90               | 0.06             | 104.51            | 4.13           | 1.92                 | 0.06               | 4.00             | 10.00               | 4.73              |      |       |      |
| 173.83            | 157.83           | 0.12      | 55.45              | 157.83             | 1.17                | -170.28             | -0.47              | -0.03            | -454.72           | 4.66           | 2.44                 | 0.08               | 4.00             | 180.00              | 5.74              |      |       |      |
| 182.89            | 166.89           | 0.01      | 1.28               | 166.88             | 0.38                | -175.84             | -0.36              | -0.03            | -179.35           | 4.33           | 0.79                 | 0.03               | 5.00             | 180.00              | 4.06              |      |       |      |
| 191.22            | 175.22           | 0.18      | 196.73             | 175.22             | 0.69                | -165.37             | 0.61               | 0.07             | -592.31           | 2.60           | 2.20                 | 0.07               | 3.00             | 180.00              | 5.33              |      |       |      |
| 201.26            | 185.26           | 0.39      | 141.52             | 185.26             | 0.96                | -82.85              | 0.61               | 0.03             | -164.89           | 5.98           | 1.60                 | 0.05               | 4.00             | -60.00              | 6.04              |      |       |      |
| 209.83            | 193.83           | 0.13      | 279.76             | 193.83             | 1.72                | 169.88              | -0.90              | -0.08            | 484.22            | 3.23           | 4.56                 | 0.15               | 5.00             | 180.00              | 3.56              |      |       |      |
| 219.14            | 203.14           | 0.20      | 145.16             | 203.14             | 0.98                | -152.33             | 0.22               | 0.02             | -433.70           | 3.27           | 2.78                 | 0.09               | 3.00             | -170.00             | 6.31              |      |       |      |
| 228.53            | 212.53           | 0.21      | 266.64             | 212.53             | 1.13                | 149.98              | 0.03               | 0.00             | 388.04            | 5.83           | 1.82                 | 0.06               | 4.00             | 130.00              | 5.39              |      |       |      |
| 236.97            | 220.97           | 0.35      | 227.15             | 220.97             | 0.82                | -74.25              | 0.51               | 0.07             | -140.44           | 2.13           | 3.26                 | 0.11               | 5.00             | -60.00              | 3.44              |      |       |      |
| 246.66            | 230.66           | 0.03      | 72.73              | 230.66             | 1.17                | -178.04             | -0.99              | -0.07            | -478.13           | 4.30           | 2.63                 | 0.09               | 4.00             | 170.00              | 5.69              |      |       |      |
| 255.68            | 239.68           | 0.28      | 112.69             | 239.68             | 0.85                | 44.27               | 0.82               | 0.04             | 132.80            | 5.59           | 1.37                 | 0.05               | 6.00             | 30.00               | 3.03              |      |       |      |
| 264.66            | 248.66           | 1.08      | 92.72              | 248.66             | 2.77                | -26.51              | 2.70               | 0.25             | -66.73            | 3.29           | 7.57                 | 0.25               | 5.00             | -20.00              | 3.98              |      |       |      |
| 274.14            | 258.14           | 2.74      | 116.33             | 258.13             | 5.71                | 37.56               | 5.25               | 0.26             | 74.78             | 6.45           | 8.39                 | 0.28               | 5.00             | 40.00               | 4.47              |      |       |      |
| 283.31            | 267.31           | 4.70      | 105.57             | 267.28             | 6.75                | -25.12              | 6.38               | 0.38             | -35.21            | 5.20           | 11.93                | 0.40               | 5.00             | -10.00              | 4.18              |      |       |      |
| 292.08            | 276.08           | 6.74      | 105.41             | 276.01             | 6.99                | -0.52               | 6.99               | 0.48             | -0.54             | 4.29           | 14.28                | 0.48               | 3.00             | -30.00              | 5.77              |      |       |      |
| 301.24            | 285.24           | 8.89      | 105.63             | 285.09             | 7.05                | 0.93                | 7.05               | 0.43             | 0.74              | 4.99           | 12.94                | 0.43               | 5.00             | 0.00                | 4.17              |      |       |      |
| 310.94            | 294.94           | 11.82     | 106.00             | 294.63             | 9.07                | 1.45                | 9.07               | 0.75             | 1.12              | 3.93           | 22.37                | 0.75               | 5.00             | -10.00              | 4.70              |      |       |      |
| 320.09            | 304.09           | 14.33     | 105.69             | 303.53             | 8.22                | -1.72               | 8.21               | 0.50             | -0.99             | 4.98           | 15.09                | 0.50               | 4.00             | -20.00              | 5.14              |      |       |      |
| <b>MWD Run #2</b> |                  |           |                    |                    |                     |                     |                    |                  |                   |                |                      |                    |                  |                     |                   |      |       |      |
| 329.67            | 312.67           | 17.06     | 120.51             | 311.80             | 16.88               | 63.01               | 9.55               |                  | 51.79             |                |                      |                    | 6.00             | 50.00               | 3.59              |      |       |      |
| 338.75            | 321.75           | 19.47     | 125.53             | 320.42             | 9.49                | 35.58               | 7.95               |                  | 16.59             |                |                      |                    | 6.00             | 50.00               | 3.07              |      |       |      |
| 347.22            | 330.22           | 22.15     | 126.42             | 328.33             | 9.56                | 7.10                | 9.49               |                  | 3.13              |                |                      |                    | 4.00             | 10.00               | 4.47              |      |       |      |
| 356.83            | 339.83           | 25.12     | 128.42             | 337.15             | 9.60                | 16.06               | 9.27               | 0.45             | 6.25              | 6.54           | 14.11                | 0.47               | 4.00             | 10.00               | 5.62              |      |       |      |

**End of Well Report for AA Pad, AA16**

| Slide Sheet       |                  |           |                    |                    |                     |                     |                    |                  |                   |                |                      |                    |                  |                     |                   |
|-------------------|------------------|-----------|--------------------|--------------------|---------------------|---------------------|--------------------|------------------|-------------------|----------------|----------------------|--------------------|------------------|---------------------|-------------------|
| Bit Depth (m)     | Survey Depth (m) | Incl. (°) | (Grid) Azimuth (°) | Vertical Depth (m) | Dogleg Rate (°/30m) | Calc'd Toolface (°) | Build Rate (°/30m) | Build Seen (°/m) | Turn Rate (°/30m) | Slide Seen (m) | Motor Output (°/30m) | Motor Output (°/m) | Slide Length (m) | Toolface Orient (°) | Rotate Length (m) |
| 366.27            | 349.27           | 27.95     | 130.61             | 345.59             | 9.53                | 20.03               | 9.01               | 0.57             | 6.96              | 4.97           | 18.09                | 0.60               | 4.00             | 0.00                | 5.43              |
| 374.68            | 357.68           | 30.68     | 131.53             | 352.92             | 9.88                | 9.76                | 9.75               | 0.98             | 3.28              | 2.80           | 29.75                | 0.99               | 6.00             | 0.00                | 2.41              |
| 384.12            | 367.12           | 33.31     | 133.00             | 360.93             | 8.70                | 17.14               | 8.34               | 0.66             | 4.67              | 4.01           | 20.51                | 0.68               | 3.00             | -10.00              | 6.44              |
| 392.84            | 375.84           | 35.82     | 132.93             | 368.11             | 8.64                | -0.90               | 8.64               | 0.40             | -0.23             | 6.31           | 11.95                | 0.40               | 3.00             | -20.00              | 5.72              |
| 402.89            | 385.89           | 38.36     | 132.82             | 376.12             | 7.58                | -1.54               | 7.58               | 0.70             | -0.33             | 3.60           | 21.13                | 0.70               | 4.00             | 20.00               | 6.04              |
| 411.71            | 394.71           | 40.88     | 132.90             | 382.92             | 8.58                | 1.23                | 8.58               | 0.81             | 0.28              | 3.10           | 24.40                | 0.81               | 5.00             | -30.00              | 3.83              |
| 420.20            | 403.20           | 42.98     | 133.14             | 389.23             | 7.43                | 4.40                | 7.41               | 0.86             | 0.84              | 2.45           | 25.77                | 0.86               | 4.00             | -10.00              | 4.49              |
| 429.91            | 412.91           | 45.42     | 133.35             | 396.19             | 7.54                | 3.49                | 7.53               | 0.41             | 0.64              | 5.88           | 12.44                | 0.41               | 5.00             | 0.00                | 4.71              |
| 438.59            | 421.59           | 47.91     | 133.35             | 402.15             | 8.64                | -0.06               | 8.64               | 0.60             | -0.01             | 4.19           | 17.91                | 0.60               | 6.00             | 0.00                | 2.67              |
| 447.74            | 430.74           | 50.23     | 132.87             | 408.14             | 7.68                | -9.04               | 7.59               | 0.52             | -1.57             | 4.44           | 15.81                | 0.53               | 4.00             | -20.00              | 5.15              |
| 457.59            | 440.59           | 53.34     | 132.15             | 414.23             | 9.62                | -10.56              | 9.47               | 0.43             | -2.20             | 7.17           | 13.21                | 0.44               | 5.00             | 0.00                | 4.85              |
| 466.22            | 449.22           | 55.59     | 132.15             | 419.25             | 7.85                | 0.17                | 7.85               | 0.65             | 0.03              | 3.48           | 19.45                | 0.65               | 3.00             | 20.00               | 5.64              |
| 475.13            | 458.13           | 58.06     | 132.47             | 424.13             | 8.36                | 6.17                | 8.31               | 0.61             | 1.06              | 4.07           | 18.32                | 0.61               | 3.00             | 20.00               | 5.91              |
| 484.53            | 467.53           | 60.16     | 132.89             | 428.95             | 6.79                | 9.81                | 6.69               | 0.56             | 1.33              | 3.76           | 16.94                | 0.56               | 5.00             | 10.00               | 4.40              |
| 493.77            | 476.77           | 62.85     | 132.43             | 433.36             | 8.84                | -8.63               | 8.74               | 0.81             | -1.49             | 3.33           | 24.55                | 0.82               | 3.00             | 0.00                | 6.24              |
| 502.84            | 485.84           | 65.57     | 132.80             | 437.30             | 9.06                | 7.03                | 8.99               | 0.58             | 1.22              | 4.67           | 17.60                | 0.59               | 5.00             | 40.00               | 4.07              |
| 512.64            | 495.64           | 68.01     | 132.59             | 441.17             | 7.51                | -4.46               | 7.49               | 0.69             | -0.63             | 3.56           | 20.67                | 0.69               | 3.00             | -10.00              | 6.80              |
| 521.82            | 504.82           | 70.10     | 132.89             | 444.45             | 6.88                | 7.58                | 6.82               | 0.41             | 0.96              | 5.11           | 12.35                | 0.41               | 5.00             | 10.00               | 4.18              |
| 530.39            | 513.39           | 73.04     | 132.84             | 447.16             | 10.31               | -0.86               | 10.30              | 1.66             | -0.16             | 1.77           | 49.80                | 1.66               | 4.00             | 20.00               | 4.57              |
| 539.42            | 522.42           | 75.33     | 132.83             | 449.62             | 7.59                | -0.12               | 7.59               | 0.47             | -0.02             | 4.85           | 14.13                | 0.47               | 5.00             | 20.00               | 4.03              |
| 548.45            | 531.45           | 77.11     | 132.15             | 451.77             | 6.32                | -20.47              | 5.92               | 0.40             | -2.27             | 4.46           | 12.79                | 0.43               | 5.00             | -20.00              | 4.03              |
| 557.60            | 540.60           | 80.09     | 132.66             | 453.58             | 9.93                | 9.60                | 9.79               | 0.58             | 1.68              | 5.13           | 17.72                | 0.59               | 5.00             | 20.00               | 4.15              |
| 567.24            | 550.24           | 82.61     | 132.61             | 455.03             | 7.84                | -1.34               | 7.84               | 0.45             | -0.18             | 5.60           | 13.49                | 0.45               | 3.00             | 20.00               | 6.63              |
| 576.15            | 559.15           | 82.26     | 132.72             | 456.20             | 1.25                | 161.41              | -1.18              | -0.07            | 0.40              | 4.76           | 2.33                 | 0.08               | 4.00             | 160.00              | 4.91              |
| 585.30            | 568.30           | 82.68     | 132.42             | 457.40             | 1.69                | -36.15              | 1.36               | 0.16             | -1.00             | 2.52           | 6.13                 | 0.20               | 3.00             | -40.00              | 6.15              |
| 594.75            | 577.75           | 82.65     | 132.56             | 458.60             | 0.45                | 101.88              | -0.09              | -0.01            | 0.44              | 4.54           | 0.94                 | 0.03               | 4.00             | 130.00              | 5.45              |
| 603.51            | 586.51           | 82.52     | 132.35             | 459.74             | 0.83                | -121.52             | -0.43              | -0.05            | -0.71             | 2.61           | 2.79                 | 0.09               | 4.00             | -120.00             | 4.76              |
| 612.97            | 595.97           | 83.23     | 132.72             | 460.91             | 2.53                | 27.26               | 2.25               | 0.18             | 1.17              | 4.01           | 5.98                 | 0.20               | 4.00             | 10.00               | 5.46              |
| 621.70            | 604.70           | 83.05     | 131.26             | 461.95             | 5.03                | -97.26              | -0.63              | -0.05            | -5.03             | 3.96           | 11.08                | 0.37               | 4.00             | -110.00             | 4.72              |
| 630.82            | 613.82           | 82.94     | 131.09             | 463.06             | 0.65                | -122.59             | -0.35              | -0.03            | -0.55             | 3.67           | 1.62                 | 0.05               | 5.00             | -100.00             | 4.13              |
| 640.37            | 623.37           | 82.66     | 132.13             | 464.26             | 3.36                | 105.17              | -0.88              | -0.06            | 3.27              | 4.82           | 6.65                 | 0.22               | 3.00             | 110.00              | 6.55              |
| 649.02            | 632.02           | 82.98     | 130.77             | 465.34             | 4.79                | -76.82              | 1.10               | 0.07             | -4.70             | 4.52           | 9.17                 | 0.31               | 6.00             | -90.00              | 2.65              |
| 658.55            | 641.55           | 82.52     | 131.42             | 466.54             | 2.47                | 125.63              | -1.44              | -0.15            | 2.03              | 2.98           | 7.91                 | 0.26               | 5.00             | 110.00              | 4.53              |
| 668.14            | 651.14           | 82.60     | 132.12             | 467.78             | 2.21                | 83.58               | 0.25               | 0.01             | 2.21              | 6.95           | 3.04                 | 0.10               | 5.00             | 70.00               | 4.60              |
| 676.65            | 659.65           | 82.68     | 130.96             | 468.87             | 4.08                | -86.27              | 0.27               | 0.02             | -4.11             | 3.98           | 8.73                 | 0.29               | 4.00             | -80.00              | 4.51              |
| 686.32            | 669.32           | 83.19     | 130.96             | 470.06             | 1.59                | -0.14               | 1.59               | 0.10             | 0.00              | 5.08           | 3.02                 | 0.10               | 3.00             | -20.00              | 6.67              |
| 695.07            | 678.07           | 82.42     | 130.29             | 471.16             | 3.47                | -139.40             | -2.63              | -0.18            | -2.28             | 4.24           | 7.16                 | 0.24               | 5.00             | -150.00             | 3.74              |
| 704.13            | 687.13           | 83.09     | 128.06             | 472.30             | 7.68                | -73.38              | 2.21               | 0.28             | -7.41             | 2.39           | 29.14                | 0.97               | 5.00             | -50.00              | 4.06              |
| 713.91            | 696.91           | 82.95     | 125.92             | 473.49             | 6.51                | -93.94              | -0.43              | -0.02            | -6.54             | 6.04           | 10.55                | 0.35               | 5.00             | -110.00             | 4.78              |
| 722.77            | 705.77           | 82.88     | 122.98             | 474.58             | 9.90                | -91.63              | -0.25              | -0.02            | -9.98             | 4.80           | 18.28                | 0.61               | 6.00             | -70.00              | 2.86              |
| 731.92            | 714.92           | 83.14     | 120.50             | 475.69             | 8.12                | -84.06              | 0.86               | 0.06             | -8.14             | 4.37           | 17.01                | 0.57               | 4.00             | -60.00              | 5.15              |
| 740.87            | 723.87           | 83.23     | 119.07             | 476.76             | 4.74                | -86.61              | 0.29               | 0.01             | -4.77             | 6.09           | 6.98                 | 0.23               | 4.00             | -100.00             | 4.95              |
| 749.69            | 732.69           | 83.79     | 115.63             | 477.75             | 11.79               | -80.90              | 1.91               | 0.15             | -11.71            | 3.67           | 28.30                | 0.94               | 4.00             | -80.00              | 4.82              |
| 759.30            | 742.30           | 84.53     | 113.32             | 478.73             | 7.54                | -72.22              | 2.32               | 0.16             | -7.21             | 4.66           | 15.55                | 0.52               | 3.00             | -80.00              | 6.61              |
| 768.58            | 751.58           | 84.34     | 110.93             | 479.63             | 7.72                | -94.69              | -0.62              | -0.04            | -7.73             | 4.46           | 16.05                | 0.53               | 4.00             | -90.00              | 5.28              |
| 777.95            | 760.95           | 84.53     | 109.37             | 480.54             | 5.01                | -83.12              | 0.61               | 0.07             | -4.99             | 2.76           | 17.02                | 0.57               | 4.00             | -80.00              | 5.37              |
| 787.02            | 770.02           | 85.25     | 106.07             | 481.35             | 11.14               | -77.71              | 2.40               | 0.19             | -10.92            | 3.79           | 26.67                | 0.89               | 4.00             | -90.00              | 5.07              |
| <b>MWD Run #3</b> |                  |           |                    |                    |                     |                     |                    |                  |                   |                |                      |                    |                  |                     |                   |
| 796.08            | 780.58           | 83.76     | 104.26             | 482.36             | 6.65                | -129.89             | -4.26              |                  | -5.13             |                |                      |                    | 3.00             | -120.00             | 6.06              |
| 805.75            | 790.25           | 84.18     | 101.69             | 483.38             | 8.03                | -80.66              | 1.32               |                  | -7.96             |                |                      |                    | 3.00             | -60.00              | 6.67              |
| 815.28            | 799.78           | 84.47     | 99.76              | 484.32             | 6.14                | -81.51              | 0.92               |                  | -6.10             |                |                      |                    | 5.00             | -110.00             | 4.53              |
| 823.94            | 808.44           | 84.64     | 98.42              | 485.14             | 4.66                | -82.94              | 0.58               | 0.06             | -4.65             | 2.69           | 15.01                | 0.50               | 4.00             | -70.00              | 4.66              |
| 833.34            | 817.84           | 85.15     | 95.38              | 485.98             | 9.79                | -80.55              | 1.63               | 0.10             | -9.70             | 4.87           | 18.90                | 0.63               | 6.00             | -70.00              | 3.40              |
| 842.31            | 826.81           | 85.08     | 92.69              | 486.74             | 8.95                | -91.59              | -0.23              | -0.02            | -8.98             | 4.31           | 18.63                | 0.62               | 6.00             | -60.00              | 2.97              |
| 851.47            | 835.97           | 85.76     | 89.68              | 487.47             | 10.08               | -77.34              | 2.23               | 0.12             | -9.86             | 5.76           | 16.03                | 0.53               | 3.00             | -110.00             | 6.16              |
| 860.57            | 845.07           | 86.52     | 87.97              | 488.08             | 6.14                | -66.10              | 2.49               | 0.12             | -5.62             | 6.13           | 9.11                 | 0.30               | 3.00             | -80.00              | 6.10              |
| 869.61            | 854.11           | 86.43     | 85.88              | 488.64             | 6.93                | -92.64              | -0.31              | -0.03            | -6.94             | 2.88           | 21.76                | 0.73               | 4.00             | -90.00              | 5.04              |
| 878.81            | 863.31           | 87.10     | 82.88              | 489.16             | 10.02               | -77.50              | 2.18               | 0.22             | -9.80             | 3.10           | 29.75                | 0.99               | 6.00             | -80.00              | 3.20              |
| 887.83            | 872.33           | 87.17     | 81.35              | 489.61             | 5.07                | -87.41              | 0.23               | 0.02             | -5.07             | 3.98           | 11.49                | 0.38               | 5.00             | -70.00              | 4.02              |
| 896.77            | 881.27           | 87.27     | 77.69              | 490.05             | 12.28               | -88.38              | 0.37               | 0.02             | -12.29            | 5.74           | 19.13                | 0.64               | 4.00             | -120.00             | 4.94              |
| 906.10            | 890.60           | 87.86     | 75.04              | 490.44             | 8.72                | -77.68              | 1.87               | 0.11             | -8.52             | 5.31           | 15.31                | 0.51               | 5.00             | -80.00              | 4.33              |
| 915.99            | 900.49           | 87.96     | 73.07              | 490.80             | 5.99                | -87.04              | 0.31               | 0.02             | -5.98             | 4.95           | 11.96                | 0.40               | 4.00             | -110.00             | 5.89              |

**End of Well Report for AA Pad, AA16**

| Slide Sheet   |                  |           |                    |                    |                     |                     |                    |                  |                   |                |                      |                    |                  |                     |                   |
|---------------|------------------|-----------|--------------------|--------------------|---------------------|---------------------|--------------------|------------------|-------------------|----------------|----------------------|--------------------|------------------|---------------------|-------------------|
| Bit Depth (m) | Survey Depth (m) | Incl. (°) | (Grid) Azimuth (°) | Vertical Depth (m) | Dogleg Rate (°/30m) | Calc'd Toolface (°) | Build Rate (°/30m) | Build Seen (°/m) | Turn Rate (°/30m) | Slide Seen (m) | Motor Output (°/30m) | Motor Output (°/m) | Slide Length (m) | Toolface Orient (°) | Rotate Length (m) |
| 924.22        | 908.72           | 88.98     | 69.43              | 491.02             | 13.76               | -74.32              | 3.73               | 0.26             | -13.25            | 3.90           | 29.04                | 0.97               | 4.00             | -60.00              | 4.23              |
| 933.70        | 918.20           | 89.26     | 67.19              | 491.17             | 7.16                | -82.93              | 0.88               | 0.08             | -7.10             | 3.59           | 18.89                | 0.63               | 3.00             | -100.00             | 6.48              |
| 942.82        | 927.32           | 89.39     | 64.07              | 491.28             | 10.29               | -87.62              | 0.43               | 0.03             | -10.28            | 4.79           | 19.59                | 0.65               | 6.00             | -90.00              | 3.12              |
| 952.10        | 936.60           | 89.56     | 64.59              | 491.36             | 1.77                | 72.72               | 0.53               | 0.06             | 1.69              | 2.90           | 5.68                 | 0.19               | 3.00             | 50.00               | 6.28              |
| 960.92        | 945.42           | 89.62     | 65.97              | 491.42             | 4.70                | 87.14               | 0.23               | 0.01             | 4.69              | 5.70           | 7.27                 | 0.24               | 4.00             | 80.00               | 4.82              |
| 970.38        | 954.88           | 89.73     | 65.52              | 491.48             | 1.45                | -77.09              | 0.32               | 0.03             | -1.41             | 3.18           | 4.31                 | 0.14               | 5.00             | -70.00              | 4.46              |
| 979.32        | 963.82           | 90.18     | 65.16              | 491.49             | 1.96                | -38.25              | 1.54               | 0.11             | -1.21             | 4.12           | 4.25                 | 0.14               | 5.00             | -50.00              | 3.94              |
| 988.84        | 973.34           | 89.45     | 65.21              | 491.52             | 2.32                | 176.18              | -2.31              | -0.15            | 0.15              | 5.06           | 4.36                 | 0.15               | 3.00             | 180.00              | 6.52              |
| 997.90        | 982.40           | 89.92     | 64.54              | 491.57             | 2.72                | -55.27              | 1.55               | 0.09             | -2.24             | 5.04           | 4.89                 | 0.16               | 5.00             | -70.00              | 4.06              |
| 1,006.67      | 991.17           | 90.16     | 65.02              | 491.56             | 1.83                | 63.53               | 0.82               | 0.10             | 1.64              | 2.33           | 6.90                 | 0.23               | 5.00             | 60.00               | 3.77              |
| 1,016.60      | 1,001.10         | 90.20     | 65.59              | 491.53             | 1.73                | 85.59               | 0.13               | 0.01             | 1.73              | 5.87           | 2.93                 | 0.10               | 3.00             | 90.00               | 6.93              |
| 1,025.46      | 1,009.96         | 89.73     | 65.72              | 491.53             | 1.67                | 164.95              | -1.61              | -0.10            | 0.43              | 4.80           | 3.08                 | 0.10               | 4.00             | 160.00              | 4.86              |
| 1,034.47      | 1,018.97         | 90.37     | 64.19              | 491.53             | 5.53                | -67.03              | 2.16               | 0.27             | -5.09             | 2.37           | 21.02                | 0.70               | 5.00             | -50.00              | 4.01              |
| 1,043.50      | 1,028.00         | 90.20     | 65.08              | 491.48             | 3.04                | 100.66              | -0.56              | -0.04            | 2.98              | 4.17           | 6.57                 | 0.22               | 5.00             | 130.00              | 4.03              |
| 1,052.37      | 1,036.87         | 90.08     | 64.83              | 491.46             | 0.96                | -117.02             | -0.44              | -0.03            | -0.86             | 4.86           | 1.75                 | 0.06               | 6.00             | -140.00             | 2.87              |
| 1,062.19      | 1,046.69         | 90.31     | 64.15              | 491.43             | 2.20                | -71.41              | 0.70               | 0.04             | -2.09             | 5.79           | 3.74                 | 0.12               | 6.00             | -70.00              | 3.82              |
| 1,071.02      | 1,055.52         | 90.28     | 64.90              | 491.38             | 2.57                | 92.19               | -0.10              | 0.00             | 2.57              | 5.96           | 3.81                 | 0.13               | 6.00             | 90.00               | 2.83              |
| 1,080.46      | 1,064.96         | 89.82     | 65.40              | 491.38             | 2.15                | 132.84              | -1.46              | -0.08            | 1.57              | 5.62           | 3.60                 | 0.12               | 5.00             | 140.00              | 4.44              |
| 1,089.46      | 1,073.96         | 89.52     | 65.00              | 491.43             | 1.65                | -126.39             | -0.98              | -0.05            | -1.33             | 6.17           | 2.41                 | 0.08               | 4.00             | -100.00             | 5.00              |
| 1,098.84      | 1,083.34         | 90.35     | 64.81              | 491.44             | 2.72                | -12.55              | 2.66               | 0.17             | -0.59             | 4.94           | 5.17                 | 0.17               | 5.00             | 0.00                | 4.38              |
| 1,107.18      | 1,091.68         | 90.20     | 65.89              | 491.40             | 3.91                | 98.30               | -0.56              | -0.05            | 3.87              | 3.34           | 9.77                 | 0.33               | 3.00             | 100.00              | 5.34              |
| 1,116.52      | 1,101.02         | 90.10     | 65.97              | 491.37             | 0.41                | 141.97              | -0.32              | -0.02            | 0.25              | 4.96           | 0.78                 | 0.03               | 5.00             | 120.00              | 4.34              |
| 1,125.53      | 1,110.03         | 89.80     | 65.18              | 491.38             | 2.79                | -110.51             | -0.98              | -0.08            | -2.62             | 3.67           | 6.86                 | 0.23               | 6.00             | -100.00             | 3.01              |
| 1,134.72      | 1,119.22         | 89.42     | 65.06              | 491.44             | 1.32                | -162.87             | -1.26              | -0.08            | -0.39             | 4.85           | 2.50                 | 0.08               | 5.00             | -170.00             | 4.19              |
| 1,144.09      | 1,128.59         | 89.57     | 65.23              | 491.53             | 0.72                | 47.52               | 0.49               | 0.02             | 0.53              | 6.36           | 1.06                 | 0.04               | 3.00             | 70.00               | 6.37              |
| 1,153.04      | 1,137.54         | 89.56     | 64.18              | 491.59             | 3.53                | -90.22              | -0.01              | 0.00             | -3.53             | 4.76           | 6.63                 | 0.22               | 5.00             | -110.00             | 3.95              |
| 1,162.06      | 1,146.56         | 89.91     | 64.37              | 491.64             | 1.31                | 28.90               | 1.15               | 0.13             | 0.64              | 2.65           | 4.47                 | 0.15               | 3.00             | 40.00               | 6.02              |
| 1,171.75      | 1,156.25         | 89.81     | 64.57              | 491.66             | 0.69                | 117.71              | -0.32              | -0.02            | 0.61              | 5.53           | 1.21                 | 0.04               | 5.00             | 150.00              | 4.69              |
| 1,181.02      | 1,165.52         | 89.51     | 64.04              | 491.72             | 1.97                | -119.56             | -0.97              | -0.09            | -1.71             | 3.46           | 5.27                 | 0.18               | 6.00             | -100.00             | 3.27              |
| 1,190.05      | 1,174.55         | 89.68     | 64.31              | 491.78             | 1.05                | 57.52               | 0.56               | 0.04             | 0.89              | 4.34           | 2.19                 | 0.07               | 5.00             | 50.00               | 4.03              |
| 1,199.49      | 1,183.99         | 90.04     | 64.84              | 491.80             | 2.06                | 55.55               | 1.17               | 0.06             | 1.70              | 6.17           | 3.15                 | 0.11               | 5.00             | -80.00              | 4.44              |
| 1,207.89      | 1,192.39         | 90.25     | 65.10              | 491.78             | 1.18                | 51.29               | 0.74               | 0.05             | 0.92              | 4.37           | 2.26                 | 0.08               | 6.00             | 40.00               | 2.40              |
| 1,217.15      | 1,201.65         | 89.90     | 65.12              | 491.77             | 1.14                | 176.74              | -1.14              | -0.07            | 0.06              | 4.82           | 2.19                 | 0.07               | 5.00             | -150.00             | 4.26              |
| MWD Run #4    |                  |           |                    |                    |                     |                     |                    |                  |                   |                |                      |                    |                  |                     |                   |
| 1,226.07      | 1,209.07         | 90.30     | 64.09              | 491.76             | 4.47                | -68.84              | 1.61               |                  | -4.17             |                |                      |                    | 5.00             | -60.00              | 3.92              |
| 1,235.13      | 1,218.13         | 89.77     | 64.81              | 491.75             | 2.96                | 125.86              | -1.74              | -0.53            | 2.40              | 0.98           | 27.38                | 0.91               | 5.00             | 120.00              | 4.06              |
| 1,244.07      | 1,227.07         | 89.72     | 64.12              | 491.79             | 2.33                | -94.05              | -0.16              | -0.01            | -2.33             | 5.02           | 4.15                 | 0.14               | 6.00             | -90.00              | 2.94              |
| 1,253.77      | 1,236.77         | 90.17     | 64.62              | 491.80             | 2.09                | 48.54               | 1.38               | 0.08             | 1.56              | 5.64           | 3.59                 | 0.12               | 4.00             | 30.00               | 5.70              |
| 1,263.15      | 1,246.15         | 89.62     | 65.21              | 491.82             | 2.57                | 133.54              | -1.77              | -0.09            | 1.86              | 6.44           | 3.74                 | 0.12               | 4.00             | 120.00              | 5.38              |
| 1,271.90      | 1,254.90         | 89.85     | 65.04              | 491.86             | 0.98                | -36.75              | 0.79               | 0.08             | -0.59             | 3.05           | 2.81                 | 0.09               | 6.00             | -50.00              | 2.75              |
| 1,280.61      | 1,263.61         | 89.64     | 65.19              | 491.90             | 0.91                | 143.17              | -0.73              | -0.06            | 0.54              | 3.33           | 2.37                 | 0.08               | 3.00             | 140.00              | 5.71              |
| 1,290.43      | 1,273.43         | 90.28     | 64.66              | 491.90             | 2.55                | -39.75              | 1.96               | 0.09             | -1.63             | 7.07           | 3.54                 | 0.12               | 5.00             | -70.00              | 4.82              |
| 1,299.22      | 1,282.22         | 90.01     | 65.82              | 491.88             | 4.06                | 103.01              | -0.91              | -0.09            | 3.96              | 3.08           | 11.60                | 0.39               | 5.00             | 120.00              | 3.79              |
| 1,308.43      | 1,291.43         | 89.77     | 65.54              | 491.90             | 1.19                | -130.23             | -0.77              | -0.05            | -0.91             | 4.39           | 2.50                 | 0.08               | 4.00             | -140.00             | 5.21              |
| 1,317.61      | 1,300.61         | 89.79     | 65.15              | 491.94             | 1.27                | -87.64              | 0.05               | 0.00             | -1.27             | 5.39           | 2.16                 | 0.07               | 3.00             | -120.00             | 6.18              |
| 1,326.48      | 1,309.48         | 90.26     | 64.86              | 491.93             | 1.87                | -31.53              | 1.59               | 0.13             | -0.98             | 3.66           | 4.53                 | 0.15               | 4.00             | -30.00              | 4.87              |
| 1,335.75      | 1,318.75         | 89.99     | 65.47              | 491.91             | 2.14                | 114.55              | -0.89              | -0.09            | 1.95              | 3.09           | 6.43                 | 0.21               | 4.00             | 140.00              | 5.27              |
| 1,344.67      | 1,327.67         | 90.33     | 64.33              | 491.89             | 4.00                | -73.10              | 1.16               | 0.09             | -3.83             | 4.05           | 8.82                 | 0.29               | 4.00             | -90.00              | 4.92              |
| 1,354.31      | 1,337.31         | 89.92     | 64.12              | 491.87             | 1.44                | -153.49             | -1.29              | -0.09            | -0.64             | 4.37           | 3.18                 | 0.11               | 3.00             | -120.00             | 6.64              |
| 1,363.04      | 1,346.04         | 89.73     | 64.49              | 491.89             | 1.42                | 116.94              | -0.64              | -0.05            | 1.26              | 3.81           | 3.25                 | 0.11               | 4.00             | 130.00              | 4.73              |
| 1,372.95      | 1,355.95         | 90.27     | 65.52              | 491.89             | 3.52                | 62.42               | 1.63               | 0.16             | 3.12              | 3.27           | 10.66                | 0.36               | 4.00             | 60.00               | 5.91              |
| 1,381.27      | 1,364.27         | 89.66     | 65.90              | 491.90             | 2.60                | 147.70              | -2.20              | -0.17            | 1.39              | 3.59           | 6.02                 | 0.20               | 4.00             | 140.00              | 4.32              |
| 1,390.76      | 1,373.76         | 89.66     | 64.69              | 491.95             | 3.83                | -89.96              | 0.00               | 0.00             | -3.83             | 3.58           | 10.15                | 0.34               | 3.00             | -80.00              | 6.49              |
| 1,399.74      | 1,382.74         | 89.58     | 65.37              | 492.01             | 2.28                | 96.82               | -0.27              | -0.02            | 2.27              | 4.66           | 4.40                 | 0.15               | 4.00             | 100.00              | 4.98              |
| 1,409.49      | 1,392.49         | 89.75     | 65.58              | 492.07             | 0.84                | 51.87               | 0.52               | 0.05             | 0.66              | 3.26           | 2.50                 | 0.08               | 4.00             | 50.00               | 5.75              |
| 1,418.52      | 1,401.52         | 89.40     | 64.07              | 492.14             | 5.15                | -102.82             | -1.14              | -0.08            | -5.02             | 4.05           | 11.49                | 0.38               | 3.00             | -110.00             | 6.03              |
| 1,427.19      | 1,410.19         | 90.14     | 65.59              | 492.17             | 5.84                | 64.03               | 2.56               | 0.25             | 5.25              | 2.92           | 17.34                | 0.58               | 4.00             | 70.00               | 4.67              |
| 1,436.74      | 1,419.74         | 90.24     | 64.97              | 492.14             | 1.98                | -80.94              | 0.31               | 0.03             | -1.95             | 3.52           | 5.36                 | 0.18               | 6.00             | -90.00              | 3.55              |
| 1,445.48      | 1,428.48         | 89.68     | 64.41              | 492.15             | 2.71                | -135.41             | -1.93              | -0.14            | -1.90             | 4.07           | 5.82                 | 0.19               | 3.00             | -150.00             | 5.74              |
| 1,454.46      | 1,437.46         | 90.10     | 65.20              | 492.16             | 3.00                | 61.81               | 1.42               | 0.08             | 2.64              | 5.43           | 4.96                 | 0.17               | 3.00             | 90.00               | 5.98              |
| 1,463.55      | 1,446.55         | 89.81     | 65.82              | 492.17             | 2.25                | 115.89              | -0.98              | -0.09            | 2.03              | 3.35           | 6.11                 | 0.20               | 4.00             | 130.00              | 5.09              |
| 1,472.99      | 1,455.99         | 90.21     | 65.89              | 492.17             | 1.31                | 10.17               | 1.29               | 0.12             | 0.23              | 3.46           | 3.59                 | 0.12               | 6.00             | 20.00               | 3.44              |

**End of Well Report for AA Pad, AA16**

| Slide Sheet   |                  |           |                    |                    |                     |                     |                    |                  |                   |                |                      |                    |                  |                     |                   |
|---------------|------------------|-----------|--------------------|--------------------|---------------------|---------------------|--------------------|------------------|-------------------|----------------|----------------------|--------------------|------------------|---------------------|-------------------|
| Bit Depth (m) | Survey Depth (m) | Incl. (°) | (Grid) Azimuth (°) | Vertical Depth (m) | Dogleg Rate (°/30m) | Calc'd Toolface (°) | Build Rate (°/30m) | Build Seen (°/m) | Turn Rate (°/30m) | Slide Seen (m) | Motor Output (°/30m) | Motor Output (°/m) | Slide Length (m) | Toolface Orient (°) | Rotate Length (m) |
| 1,482.61      | 1,465.61         | 90.14     | 65.31              | 492.14             | 1.83                | -96.83              | -0.22              | -0.02            | -1.82             | 4.53           | 3.90                 | 0.13               | 3.00             | -110.00             | 6.62              |
| 1,491.27      | 1,474.27         | 89.84     | 64.03              | 492.14             | 4.55                | -103.38             | -1.05              | -0.06            | -4.43             | 5.22           | 7.55                 | 0.25               | 6.00             | -120.00             | 2.66              |
| 1,500.36      | 1,483.36         | 89.48     | 64.82              | 492.20             | 2.88                | 114.36              | -1.19              | -0.15            | 2.62              | 2.47           | 10.60                | 0.35               | 4.00             | 120.00              | 5.09              |
| 1,509.75      | 1,492.75         | 89.81     | 65.43              | 492.25             | 2.21                | 61.17               | 1.06               | 0.05             | 1.93              | 6.73           | 3.08                 | 0.10               | 6.00             | 50.00               | 3.39              |
| 1,518.67      | 1,501.67         | 89.74     | 63.52              | 492.29             | 6.43                | -92.16              | -0.24              | -0.02            | -6.42             | 3.83           | 14.97                | 0.50               | 5.00             | -120.00             | 3.92              |
| 1,527.91      | 1,510.91         | 90.11     | 65.41              | 492.30             | 6.25                | 78.86               | 1.21               | 0.06             | 6.13              | 5.85           | 9.87                 | 0.33               | 4.00             | 80.00               | 5.24              |
| 1,536.76      | 1,519.76         | 89.71     | 63.65              | 492.31             | 6.12                | -102.77             | -1.35              | -0.08            | -5.97             | 4.93           | 10.98                | 0.37               | 6.00             | -90.00              | 2.85              |
| 1,546.35      | 1,529.35         | 90.20     | 64.09              | 492.32             | 2.05                | 42.10               | 1.52               | 0.11             | 1.38              | 4.35           | 4.53                 | 0.15               | 4.00             | 60.00               | 5.59              |
| 1,555.23      | 1,538.23         | 89.55     | 64.67              | 492.34             | 2.93                | 138.22              | -2.19              | -0.11            | 1.95              | 6.03           | 4.32                 | 0.14               | 5.00             | 120.00              | 3.88              |
| 1,565.03      | 1,548.03         | 89.99     | 65.12              | 492.38             | 1.93                | 45.64               | 1.35               | 0.10             | 1.38              | 4.21           | 4.49                 | 0.15               | 4.00             | 40.00               | 5.80              |
| 1,573.91      | 1,556.91         | 90.36     | 63.58              | 492.35             | 5.33                | -76.69              | 1.23               | 0.07             | -5.19             | 5.00           | 9.46                 | 0.32               | 5.00             | -60.00              | 3.88              |
| 1,583.22      | 1,566.22         | 89.64     | 63.61              | 492.35             | 2.30                | 177.75              | -2.30              | -0.20            | 0.09              | 3.51           | 6.10                 | 0.20               | 6.00             | 180.00              | 3.31              |
| 1,592.55      | 1,575.55         | 90.34     | 64.63              | 492.35             | 3.97                | 55.65               | 2.24               | 0.13             | 3.28              | 5.45           | 6.80                 | 0.23               | 4.00             | 30.00               | 5.33              |
| 1,601.10      | 1,584.10         | 89.51     | 64.13              | 492.37             | 3.39                | -148.86             | -2.90              | -0.16            | -1.75             | 5.24           | 5.52                 | 0.18               | 5.00             | -130.00             | 3.55              |
| 1,610.46      | 1,593.46         | 90.38     | 64.33              | 492.37             | 2.86                | 12.63               | 2.79               | 0.22             | 0.63              | 4.03           | 6.64                 | 0.22               | 5.00             | 40.00               | 4.36              |
| 1,619.15      | 1,602.15         | 90.03     | 64.52              | 492.34             | 1.39                | 150.95              | -1.21              | -0.07            | 0.67              | 5.14           | 2.34                 | 0.08               | 4.00             | 130.00              | 4.69              |
| 1,628.85      | 1,611.85         | 90.00     | 64.97              | 492.34             | 1.39                | 94.35               | -0.11              | -0.01            | 1.38              | 5.34           | 2.52                 | 0.08               | 5.00             | 70.00               | 4.70              |
| 1,637.78      | 1,620.78         | 90.30     | 64.40              | 492.32             | 2.16                | -61.72              | 1.02               | 0.07             | -1.90             | 4.24           | 4.54                 | 0.15               | 4.00             | -70.00              | 4.93              |
| 1,647.48      | 1,630.48         | 89.98     | 64.15              | 492.29             | 1.29                | -141.92             | -1.01              | -0.07            | -0.79             | 5.00           | 2.50                 | 0.08               | 6.00             | -130.00             | 3.70              |
| 1,655.78      | 1,638.78         | 89.65     | 63.65              | 492.32             | 2.16                | -123.58             | -1.19              | -0.10            | -1.80             | 3.37           | 5.31                 | 0.18               | 6.00             | -100.00             | 2.30              |

| Survey Data       |           |                    |                    |                  |                   |              |                 |              |                      |                     |
|-------------------|-----------|--------------------|--------------------|------------------|-------------------|--------------|-----------------|--------------|----------------------|---------------------|
| Survey Depth (m)  | Incl. (°) | (Grid) Azimuth (°) | Vertical Depth (m) | Subsea Depth (m) | Local Coordinates |              | Map Coordinates |              | Vertical Section (m) | Dogleg Rate (°/30m) |
|                   |           |                    |                    |                  | Northings (m)     | Eastings (m) | Northings (m)   | Eastings (m) |                      |                     |
| <b>MWD Run #1</b> |           |                    |                    |                  |                   |              |                 |              |                      |                     |
| 2.14              | 0.16      | 85.07              | 2.14               | -627.47          | 0.00 N            | 0.00 E       | 6,789,330.21 N  | 572,493.04 E | 0.00                 | 2.25                |
| 11.00             | 0.22      | 120.07             | 11.00              | -618.61          | 0.01 S            | 0.03 E       | 6,789,330.20 N  | 572,493.07 E | 0.03                 | 0.43                |
| 20.32             | 0.17      | 210.70             | 20.32              | -609.29          | 0.03 S            | 0.04 E       | 6,789,330.18 N  | 572,493.08 E | 0.04                 | 0.90                |
| 29.29             | 0.22      | 129.57             | 29.29              | -600.32          | 0.05 S            | 0.04 E       | 6,789,330.16 N  | 572,493.09 E | 0.04                 | 0.87                |
| 38.49             | 0.50      | 99.70              | 38.49              | -591.12          | 0.07 S            | 0.10 E       | 6,789,330.14 N  | 572,493.14 E | 0.09                 | 1.06                |
| 47.35             | 0.16      | 271.07             | 47.35              | -582.26          | 0.08 S            | 0.12 E       | 6,789,330.13 N  | 572,493.16 E | 0.12                 | 2.22                |
| 56.52             | 0.00      | 285.70             | 56.52              | -573.09          | 0.07 S            | 0.11 E       | 6,789,330.14 N  | 572,493.15 E | 0.10                 | 0.51                |
| 66.14             | 0.09      | 77.62              | 66.14              | -563.47          | 0.07 S            | 0.12 E       | 6,789,330.14 N  | 572,493.16 E | 0.11                 | 0.28                |
| 74.53             | 0.20      | 96.45              | 74.53              | -555.08          | 0.07 S            | 0.14 E       | 6,789,330.14 N  | 572,493.18 E | 0.13                 | 0.42                |
| 84.42             | 0.32      | 254.18             | 84.42              | -545.19          | 0.08 S            | 0.13 E       | 6,789,330.13 N  | 572,493.17 E | 0.12                 | 1.54                |
| 93.63             | 0.08      | 200.31             | 93.63              | -535.98          | 0.10 S            | 0.10 E       | 6,789,330.11 N  | 572,493.14 E | 0.09                 | 0.92                |
| 102.67            | 0.04      | 237.93             | 102.67             | -526.94          | 0.10 S            | 0.10 E       | 6,789,330.11 N  | 572,493.14 E | 0.08                 | 0.17                |
| 111.16            | 0.31      | 263.01             | 111.16             | -518.45          | 0.11 S            | 0.07 E       | 6,789,330.10 N  | 572,493.11 E | 0.06                 | 0.98                |
| 120.68            | 0.04      | 187.97             | 120.68             | -508.93          | 0.11 S            | 0.04 E       | 6,789,330.10 N  | 572,493.08 E | 0.03                 | 0.97                |
| 130.28            | 0.07      | 34.51              | 130.28             | -499.33          | 0.11 S            | 0.05 E       | 6,789,330.10 N  | 572,493.09 E | 0.03                 | 0.35                |
| 139.35            | 0.01      | 172.63             | 139.35             | -490.26          | 0.11 S            | 0.05 E       | 6,789,330.10 N  | 572,493.09 E | 0.04                 | 0.26                |
| 148.09            | 0.27      | 203.05             | 148.09             | -481.52          | 0.13 S            | 0.04 E       | 6,789,330.08 N  | 572,493.08 E | 0.03                 | 0.91                |
| 157.83            | 0.12      | 55.45              | 157.83             | -471.78          | 0.14 S            | 0.04 E       | 6,789,330.07 N  | 572,493.08 E | 0.03                 | 1.17                |
| 166.89            | 0.01      | 1.28               | 166.88             | -462.73          | 0.14 S            | 0.05 E       | 6,789,330.07 N  | 572,493.09 E | 0.03                 | 0.38                |
| 175.22            | 0.18      | 196.73             | 175.22             | -454.39          | 0.15 S            | 0.04 E       | 6,789,330.06 N  | 572,493.09 E | 0.03                 | 0.69                |
| 185.26            | 0.39      | 141.52             | 185.26             | -444.35          | 0.19 S            | 0.06 E       | 6,789,330.02 N  | 572,493.10 E | 0.04                 | 0.96                |
| 193.83            | 0.13      | 279.76             | 193.83             | -435.78          | 0.21 S            | 0.07 E       | 6,789,330.00 N  | 572,493.11 E | 0.05                 | 1.72                |
| 203.14            | 0.20      | 145.16             | 203.14             | -426.47          | 0.22 S            | 0.07 E       | 6,789,329.99 N  | 572,493.11 E | 0.05                 | 0.98                |
| 212.53            | 0.21      | 266.64             | 212.53             | -417.08          | 0.24 S            | 0.06 E       | 6,789,329.97 N  | 572,493.10 E | 0.04                 | 1.13                |
| 220.97            | 0.35      | 227.15             | 220.97             | -408.64          | 0.26 S            | 0.03 E       | 6,789,329.95 N  | 572,493.07 E | 0.00                 | 0.82                |
| 230.66            | 0.03      | 72.73              | 230.66             | -398.95          | 0.28 S            | 0.01 E       | 6,789,329.93 N  | 572,493.05 E | -0.02                | 1.17                |
| 239.68            | 0.28      | 112.69             | 239.68             | -389.93          | 0.28 S            | 0.03 E       | 6,789,329.93 N  | 572,493.07 E | 0.00                 | 0.85                |
| 248.66            | 1.08      | 92.72              | 248.66             | -380.95          | 0.30 S            | 0.13 E       | 6,789,329.91 N  | 572,493.18 E | 0.10                 | 2.77                |
| 258.14            | 2.74      | 116.33             | 258.13             | -371.48          | 0.40 S            | 0.43 E       | 6,789,329.81 N  | 572,493.47 E | 0.38                 | 5.71                |
| 267.31            | 4.70      | 105.57             | 267.28             | -362.33          | 0.60 S            | 0.99 E       | 6,789,329.61 N  | 572,494.03 E | 0.92                 | 6.75                |
| 276.08            | 6.74      | 105.41             | 276.01             | -353.60          | 0.83 S            | 1.83 E       | 6,789,329.38 N  | 572,494.87 E | 1.73                 | 6.99                |
| 285.24            | 8.89      | 105.63             | 285.09             | -344.52          | 1.17 S            | 3.03 E       | 6,789,329.04 N  | 572,496.07 E | 2.89                 | 7.05                |
| 294.94            | 11.82     | 106.00             | 294.63             | -334.98          | 1.64 S            | 4.71 E       | 6,789,328.57 N  | 572,497.75 E | 4.52                 | 9.07                |
| <b>MWD Run #2</b> |           |                    |                    |                  |                   |              |                 |              |                      |                     |
| 304.09            | 14.33     | 105.69             | 303.53             | -326.08          | 2.21 S            | 6.70 E       | 6,789,328.00 N  | 572,499.74 E | 6.44                 | 8.22                |
| 312.67            | 17.06     | 120.51             | 311.80             | -317.81          | 3.13 S            | 8.81 E       | 6,789,327.08 N  | 572,501.85 E | 8.44                 | 16.88               |

**End of Well Report for AA Pad, AA16**

| Survey Data       |           |                    |                    |                  |                   |              |                 |              |                      |                     |
|-------------------|-----------|--------------------|--------------------|------------------|-------------------|--------------|-----------------|--------------|----------------------|---------------------|
| Survey Depth (m)  | Incl. (°) | (Grid) Azimuth (°) | Vertical Depth (m) | Subsea Depth (m) | Local Coordinates |              | Map Coordinates |              | Vertical Section (m) | Dogleg Rate (°/30m) |
|                   |           |                    |                    |                  | Northings (m)     | Eastings (m) | Northings (m)   | Eastings (m) |                      |                     |
| 321.75            | 19.47     | 125.53             | 320.42             | -309.19          | 4.69 S            | 11.18 E      | 6,789,325.52 N  | 572,504.22 E | 10.65                | 9.49                |
| 330.22            | 22.15     | 126.42             | 328.33             | -301.28          | 6.46 S            | 13.62 E      | 6,789,323.75 N  | 572,506.66 E | 12.89                | 9.56                |
| 339.83            | 25.12     | 128.42             | 337.15             | -292.46          | 8.80 S            | 16.67 E      | 6,789,321.41 N  | 572,509.72 E | 15.70                | 9.60                |
| 349.27            | 27.95     | 130.61             | 345.59             | -284.02          | 11.48 S           | 19.92 E      | 6,789,318.73 N  | 572,512.96 E | 18.66                | 9.53                |
| 357.68            | 30.68     | 131.53             | 352.92             | -276.69          | 14.19 S           | 23.03 E      | 6,789,316.02 N  | 572,516.07 E | 21.47                | 9.88                |
| 367.12            | 33.31     | 133.00             | 360.93             | -268.68          | 17.56 S           | 26.73 E      | 6,789,312.65 N  | 572,519.77 E | 24.81                | 8.70                |
| 375.84            | 35.82     | 132.93             | 368.11             | -261.50          | 20.93 S           | 30.35 E      | 6,789,309.28 N  | 572,523.39 E | 28.07                | 8.64                |
| 385.89            | 38.36     | 132.82             | 376.12             | -253.49          | 25.05 S           | 34.79 E      | 6,789,305.16 N  | 572,527.83 E | 32.07                | 7.58                |
| 394.71            | 40.88     | 132.90             | 382.92             | -246.69          | 28.88 S           | 38.91 E      | 6,789,301.33 N  | 572,531.95 E | 35.78                | 8.58                |
| 403.20            | 42.98     | 133.14             | 389.23             | -240.38          | 32.75 S           | 43.06 E      | 6,789,297.46 N  | 572,536.10 E | 39.52                | 7.43                |
| 412.91            | 45.42     | 133.35             | 396.19             | -233.42          | 37.39 S           | 47.99 E      | 6,789,292.82 N  | 572,541.03 E | 43.95                | 7.54                |
| 421.59            | 47.91     | 133.35             | 402.15             | -227.46          | 41.72 S           | 52.58 E      | 6,789,288.49 N  | 572,545.62 E | 48.08                | 8.64                |
| 430.74            | 50.23     | 132.87             | 408.14             | -221.47          | 46.44 S           | 57.63 E      | 6,789,283.77 N  | 572,550.67 E | 52.62                | 7.68                |
| 440.59            | 53.34     | 132.15             | 414.23             | -215.38          | 51.67 S           | 63.33 E      | 6,789,278.54 N  | 572,556.37 E | 57.77                | 9.62                |
| 449.22            | 55.59     | 132.15             | 419.25             | -210.36          | 56.38 S           | 68.54 E      | 6,789,273.83 N  | 572,561.58 E | 62.47                | 7.85                |
| 458.13            | 58.06     | 132.47             | 424.13             | -205.48          | 61.40 S           | 74.05 E      | 6,789,268.81 N  | 572,567.09 E | 67.45                | 8.36                |
| 467.53            | 60.16     | 132.89             | 428.95             | -200.66          | 66.87 S           | 79.98 E      | 6,789,263.34 N  | 572,573.02 E | 72.79                | 6.79                |
| 476.77            | 62.85     | 132.43             | 433.36             | -196.25          | 72.37 S           | 85.95 E      | 6,789,257.84 N  | 572,578.99 E | 78.17                | 8.84                |
| 485.84            | 65.57     | 132.80             | 437.30             | -192.31          | 77.90 S           | 91.96 E      | 6,789,252.31 N  | 572,585.00 E | 83.59                | 9.06                |
| 495.64            | 68.01     | 132.59             | 441.17             | -188.44          | 84.01 S           | 98.58 E      | 6,789,246.20 N  | 572,591.62 E | 89.56                | 7.51                |
| 504.82            | 70.10     | 132.89             | 444.45             | -185.16          | 89.82 S           | 104.88 E     | 6,789,240.39 N  | 572,597.92 E | 95.23                | 6.88                |
| 513.39            | 73.04     | 132.84             | 447.16             | -182.45          | 95.36 S           | 110.84 E     | 6,789,234.85 N  | 572,603.88 E | 100.60               | 10.31               |
| 522.42            | 75.33     | 132.83             | 449.62             | -179.99          | 101.26 S          | 117.20 E     | 6,789,228.95 N  | 572,610.25 E | 106.34               | 7.59                |
| 531.45            | 77.11     | 132.15             | 451.77             | -177.84          | 107.19 S          | 123.67 E     | 6,789,223.02 N  | 572,616.71 E | 112.17               | 6.32                |
| 540.60            | 80.09     | 132.66             | 453.58             | -176.03          | 113.24 S          | 130.30 E     | 6,789,216.97 N  | 572,623.34 E | 118.15               | 9.93                |
| 550.24            | 82.61     | 132.61             | 455.03             | -174.58          | 119.69 S          | 137.30 E     | 6,789,210.52 N  | 572,630.34 E | 124.46               | 7.84                |
| 559.15            | 82.26     | 132.72             | 456.20             | -173.41          | 125.67 S          | 143.80 E     | 6,789,204.54 N  | 572,636.84 E | 130.32               | 1.25                |
| 568.30            | 82.68     | 132.42             | 457.40             | -172.21          | 131.81 S          | 150.48 E     | 6,789,198.40 N  | 572,643.52 E | 136.35               | 1.69                |
| 577.75            | 82.65     | 132.56             | 458.60             | -171.01          | 138.14 S          | 157.39 E     | 6,789,192.07 N  | 572,650.43 E | 142.58               | 0.45                |
| 586.51            | 82.52     | 132.35             | 459.74             | -169.87          | 144.01 S          | 163.81 E     | 6,789,186.20 N  | 572,656.85 E | 148.37               | 0.83                |
| 595.97            | 83.23     | 132.72             | 460.91             | -168.70          | 150.35 S          | 170.72 E     | 6,789,179.86 N  | 572,663.76 E | 154.60               | 2.53                |
| 604.70            | 83.05     | 131.26             | 461.95             | -167.66          | 156.15 S          | 177.16 E     | 6,789,174.06 N  | 572,670.20 E | 160.42               | 5.03                |
| 613.82            | 82.94     | 131.09             | 463.06             | -166.55          | 162.11 S          | 183.98 E     | 6,789,168.10 N  | 572,677.02 E | 166.60               | 0.65                |
| 623.37            | 82.66     | 132.13             | 464.26             | -165.35          | 168.40 S          | 191.06 E     | 6,789,161.81 N  | 572,684.10 E | 173.01               | 3.36                |
| 632.02            | 82.98     | 130.77             | 465.34             | -164.27          | 174.08 S          | 197.49 E     | 6,789,156.13 N  | 572,690.53 E | 178.83               | 4.79                |
| 641.55            | 82.52     | 131.42             | 466.54             | -163.07          | 180.29 S          | 204.61 E     | 6,789,149.92 N  | 572,697.65 E | 185.29               | 2.47                |
| 651.14            | 82.60     | 132.12             | 467.78             | -161.83          | 186.63 S          | 211.71 E     | 6,789,143.58 N  | 572,704.75 E | 191.71               | 2.21                |
| 659.65            | 82.68     | 130.96             | 468.87             | -160.74          | 192.23 S          | 218.03 E     | 6,789,137.98 N  | 572,711.07 E | 197.42               | 4.08                |
| 669.32            | 83.19     | 130.96             | 470.06             | -159.55          | 198.52 S          | 225.28 E     | 6,789,131.69 N  | 572,718.32 E | 203.99               | 1.59                |
| 678.07            | 82.42     | 130.29             | 471.16             | -158.45          | 204.17 S          | 231.86 E     | 6,789,126.04 N  | 572,724.90 E | 209.97               | 3.47                |
| 687.13            | 83.09     | 128.06             | 472.30             | -157.31          | 209.85 S          | 238.83 E     | 6,789,120.36 N  | 572,731.87 E | 216.33               | 7.68                |
| 696.91            | 82.95     | 125.92             | 473.49             | -156.12          | 215.69 S          | 246.58 E     | 6,789,114.52 N  | 572,739.62 E | 223.45               | 6.51                |
| 705.77            | 82.88     | 122.98             | 474.58             | -155.03          | 220.66 S          | 253.83 E     | 6,789,109.55 N  | 572,746.87 E | 230.16               | 9.90                |
| 714.92            | 83.14     | 120.50             | 475.69             | -153.92          | 225.44 S          | 261.55 E     | 6,789,104.77 N  | 572,754.59 E | 237.36               | 8.12                |
| 723.87            | 83.23     | 119.07             | 476.76             | -152.85          | 229.85 S          | 269.26 E     | 6,789,100.36 N  | 572,762.31 E | 244.58               | 4.74                |
| 732.69            | 83.79     | 115.63             | 477.75             | -151.86          | 233.88 S          | 277.05 E     | 6,789,096.33 N  | 572,770.09 E | 251.92               | 11.79               |
| 742.30            | 84.53     | 113.32             | 478.73             | -150.88          | 237.84 S          | 285.75 E     | 6,789,092.37 N  | 572,778.79 E | 260.17               | 7.54                |
| 751.58            | 84.34     | 110.93             | 479.63             | -149.98          | 241.32 S          | 294.31 E     | 6,789,088.89 N  | 572,787.35 E | 268.33               | 7.72                |
| 760.95            | 84.53     | 109.37             | 480.54             | -149.07          | 244.53 S          | 303.06 E     | 6,789,085.68 N  | 572,796.10 E | 276.72               | 5.01                |
| <b>MWD Run #3</b> |           |                    |                    |                  |                   |              |                 |              |                      |                     |
| 770.02            | 85.25     | 106.07             | 481.35             | -148.26          | 247.28 S          | 311.67 E     | 6,789,082.93 N  | 572,804.71 E | 285.00               | 11.14               |
| 780.58            | 83.76     | 104.26             | 482.36             | -147.25          | 250.03 S          | 321.81 E     | 6,789,080.18 N  | 572,814.85 E | 294.81               | 6.65                |
| 790.25            | 84.18     | 101.69             | 483.38             | -146.23          | 252.19 S          | 331.18 E     | 6,789,078.02 N  | 572,824.22 E | 303.92               | 8.03                |
| 799.78            | 84.47     | 99.76              | 484.32             | -145.29          | 253.95 S          | 340.50 E     | 6,789,076.26 N  | 572,833.54 E | 313.01               | 6.14                |
| 808.44            | 84.64     | 98.42              | 485.14             | -144.47          | 255.31 S          | 349.01 E     | 6,789,074.90 N  | 572,842.05 E | 321.34               | 4.66                |
| 817.84            | 85.15     | 95.38              | 485.98             | -143.63          | 256.44 S          | 358.31 E     | 6,789,073.77 N  | 572,851.35 E | 330.47               | 9.79                |
| 826.81            | 85.08     | 92.69              | 486.74             | -142.87          | 257.06 S          | 367.22 E     | 6,789,073.15 N  | 572,860.26 E | 339.28               | 8.95                |
| 835.97            | 85.76     | 89.68              | 487.47             | -142.14          | 257.25 S          | 376.35 E     | 6,789,072.96 N  | 572,869.39 E | 348.34               | 10.08               |
| 845.07            | 86.52     | 87.97              | 488.08             | -141.53          | 257.07 S          | 385.43 E     | 6,789,073.14 N  | 572,878.47 E | 357.39               | 6.14                |
| 854.11            | 86.43     | 85.88              | 488.64             | -140.97          | 256.58 S          | 394.44 E     | 6,789,073.63 N  | 572,887.48 E | 366.40               | 6.93                |
| 863.31            | 87.10     | 82.88              | 489.16             | -140.45          | 255.68 S          | 403.58 E     | 6,789,074.53 N  | 572,896.62 E | 375.58               | 10.02               |

**End of Well Report for AA Pad, AA16**

| Survey Data       |           |                    |                    |                  |                   |              |                 |              |                      |                     |
|-------------------|-----------|--------------------|--------------------|------------------|-------------------|--------------|-----------------|--------------|----------------------|---------------------|
| Survey Depth (m)  | Incl. (°) | (Grid) Azimuth (°) | Vertical Depth (m) | Subsea Depth (m) | Local Coordinates |              | Map Coordinates |              | Vertical Section (m) | Dogleg Rate (°/30m) |
|                   |           |                    |                    |                  | Northings (m)     | Eastings (m) | Northings (m)   | Eastings (m) |                      |                     |
| 872.33            | 87.17     | 81.35              | 489.61             | -140.00          | 254.45 S          | 412.50 E     | 6,789,075.76 N  | 572,905.54 E | 384.58               | 5.07                |
| 881.27            | 87.27     | 77.69              | 490.05             | -139.56          | 252.83 S          | 421.28 E     | 6,789,077.38 N  | 572,914.32 E | 393.48               | 12.28               |
| 890.60            | 87.86     | 75.04              | 490.44             | -139.17          | 250.63 S          | 430.34 E     | 6,789,079.58 N  | 572,923.38 E | 402.72               | 8.72                |
| 900.49            | 87.96     | 73.07              | 490.80             | -138.81          | 247.91 S          | 439.84 E     | 6,789,082.30 N  | 572,932.88 E | 412.45               | 5.99                |
| 908.72            | 88.98     | 69.43              | 491.02             | -138.59          | 245.27 S          | 447.63 E     | 6,789,084.94 N  | 572,940.67 E | 420.46               | 13.76               |
| 918.20            | 89.26     | 67.19              | 491.17             | -138.44          | 241.77 S          | 456.43 E     | 6,789,088.44 N  | 572,949.48 E | 429.58               | 7.16                |
| 927.32            | 89.39     | 64.07              | 491.28             | -138.33          | 238.00 S          | 464.74 E     | 6,789,092.21 N  | 572,957.78 E | 438.22               | 10.29               |
| 936.60            | 89.56     | 64.59              | 491.36             | -138.25          | 233.98 S          | 473.10 E     | 6,789,096.23 N  | 572,966.14 E | 446.95               | 1.77                |
| 945.42            | 89.62     | 65.97              | 491.42             | -138.19          | 230.30 S          | 481.12 E     | 6,789,099.92 N  | 572,974.16 E | 455.30               | 4.70                |
| 954.88            | 89.73     | 65.52              | 491.48             | -138.13          | 226.41 S          | 489.74 E     | 6,789,103.80 N  | 572,982.78 E | 464.27               | 1.45                |
| 963.82            | 90.18     | 65.16              | 491.49             | -138.12          | 222.68 S          | 497.86 E     | 6,789,107.53 N  | 572,990.91 E | 472.73               | 1.96                |
| 973.34            | 89.45     | 65.21              | 491.52             | -138.09          | 218.68 S          | 506.51 E     | 6,789,111.53 N  | 572,999.55 E | 481.73               | 2.32                |
| 982.40            | 89.92     | 64.54              | 491.57             | -138.04          | 214.84 S          | 514.71 E     | 6,789,115.37 N  | 573,007.75 E | 490.28               | 2.72                |
| 991.17            | 90.16     | 65.02              | 491.56             | -138.05          | 211.10 S          | 522.64 E     | 6,789,119.11 N  | 573,015.68 E | 498.55               | 1.83                |
| 1,001.10          | 90.20     | 65.59              | 491.53             | -138.08          | 206.95 S          | 531.66 E     | 6,789,123.26 N  | 573,024.70 E | 507.95               | 1.73                |
| 1,009.96          | 89.73     | 65.72              | 491.53             | -138.08          | 203.30 S          | 539.74 E     | 6,789,126.91 N  | 573,032.78 E | 516.35               | 1.67                |
| 1,018.97          | 90.37     | 64.19              | 491.53             | -138.08          | 199.48 S          | 547.90 E     | 6,789,130.73 N  | 573,040.94 E | 524.86               | 5.53                |
| 1,028.00          | 90.20     | 65.08              | 491.48             | -138.13          | 195.61 S          | 556.06 E     | 6,789,134.60 N  | 573,049.10 E | 533.37               | 3.04                |
| 1,036.87          | 90.08     | 64.83              | 491.46             | -138.15          | 191.86 S          | 564.09 E     | 6,789,138.35 N  | 573,057.13 E | 541.74               | 0.96                |
| 1,046.69          | 90.31     | 64.15              | 491.43             | -138.18          | 187.63 S          | 572.96 E     | 6,789,142.58 N  | 573,066.00 E | 550.99               | 2.20                |
| 1,055.52          | 90.28     | 64.90              | 491.38             | -138.23          | 183.83 S          | 580.93 E     | 6,789,146.38 N  | 573,073.97 E | 559.30               | 2.57                |
| 1,064.96          | 89.82     | 65.40              | 491.38             | -138.23          | 179.87 S          | 589.49 E     | 6,789,150.34 N  | 573,082.53 E | 568.23               | 2.15                |
| 1,073.96          | 89.52     | 65.00              | 491.43             | -138.18          | 176.09 S          | 597.66 E     | 6,789,154.12 N  | 573,090.70 E | 576.74               | 1.65                |
| 1,083.34          | 90.35     | 64.81              | 491.44             | -138.17          | 172.11 S          | 606.16 E     | 6,789,158.10 N  | 573,099.20 E | 585.59               | 2.72                |
| 1,091.68          | 90.20     | 65.89              | 491.40             | -138.21          | 168.63 S          | 613.74 E     | 6,789,161.58 N  | 573,106.78 E | 593.48               | 3.91                |
| 1,101.02          | 90.10     | 65.97              | 491.37             | -138.24          | 164.83 S          | 622.27 E     | 6,789,165.38 N  | 573,115.31 E | 602.35               | 0.41                |
| 1,110.03          | 89.80     | 65.18              | 491.38             | -138.23          | 161.10 S          | 630.47 E     | 6,789,169.11 N  | 573,123.51 E | 610.89               | 2.79                |
| 1,119.22          | 89.42     | 65.06              | 491.44             | -138.17          | 157.23 S          | 638.81 E     | 6,789,172.98 N  | 573,131.85 E | 619.58               | 1.32                |
| 1,128.59          | 89.57     | 65.23              | 491.53             | -138.08          | 153.30 S          | 647.31 E     | 6,789,176.91 N  | 573,140.35 E | 628.44               | 0.72                |
| 1,137.54          | 89.56     | 64.18              | 491.59             | -138.02          | 149.47 S          | 655.40 E     | 6,789,180.74 N  | 573,148.44 E | 636.87               | 3.53                |
| 1,146.56          | 89.91     | 64.37              | 491.64             | -137.97          | 145.56 S          | 663.52 E     | 6,789,184.65 N  | 573,156.57 E | 645.35               | 1.31                |
| 1,156.25          | 89.81     | 64.57              | 491.66             | -137.95          | 141.38 S          | 672.27 E     | 6,789,188.83 N  | 573,165.31 E | 654.48               | 0.69                |
| 1,165.52          | 89.51     | 64.04              | 491.72             | -137.89          | 137.36 S          | 680.62 E     | 6,789,192.85 N  | 573,173.66 E | 663.19               | 1.97                |
| 1,174.55          | 89.68     | 64.31              | 491.78             | -137.83          | 133.43 S          | 688.75 E     | 6,789,196.78 N  | 573,181.79 E | 671.68               | 1.05                |
| 1,183.99          | 90.04     | 64.84              | 491.80             | -137.81          | 129.37 S          | 697.27 E     | 6,789,200.84 N  | 573,190.32 E | 680.57               | 2.06                |
| 1,192.39          | 90.25     | 65.10              | 491.78             | -137.83          | 125.82 S          | 704.89 E     | 6,789,204.39 N  | 573,197.93 E | 688.50               | 1.18                |
| 1,201.65          | 89.90     | 65.12              | 491.77             | -137.84          | 121.92 S          | 713.29 E     | 6,789,208.29 N  | 573,206.33 E | 697.25               | 1.14                |
| <b>MWD Run #4</b> |           |                    |                    |                  |                   |              |                 |              |                      |                     |
| 1,209.07          | 90.30     | 64.09              | 491.76             | -137.85          | 118.74 S          | 719.99 E     | 6,789,211.47 N  | 573,213.03 E | 704.25               | 4.47                |
| 1,218.13          | 89.77     | 64.81              | 491.75             | -137.86          | 114.83 S          | 728.16 E     | 6,789,215.38 N  | 573,221.20 E | 712.77               | 2.96                |
| 1,227.07          | 89.72     | 64.12              | 491.79             | -137.82          | 110.98 S          | 736.23 E     | 6,789,219.23 N  | 573,229.27 E | 721.19               | 2.33                |
| 1,236.77          | 90.17     | 64.62              | 491.80             | -137.81          | 106.78 S          | 744.97 E     | 6,789,223.43 N  | 573,238.02 E | 730.31               | 2.09                |
| 1,246.15          | 89.62     | 65.21              | 491.82             | -137.79          | 102.81 S          | 753.47 E     | 6,789,227.40 N  | 573,246.51 E | 739.17               | 2.57                |
| 1,254.90          | 89.85     | 65.04              | 491.86             | -137.75          | 99.12 S           | 761.41 E     | 6,789,231.09 N  | 573,254.45 E | 747.44               | 0.98                |
| 1,263.61          | 89.64     | 65.19              | 491.90             | -137.71          | 95.46 S           | 769.31 E     | 6,789,234.75 N  | 573,262.35 E | 755.67               | 0.91                |
| 1,273.43          | 90.28     | 64.66              | 491.90             | -137.71          | 91.30 S           | 778.20 E     | 6,789,238.91 N  | 573,271.24 E | 764.94               | 2.55                |
| 1,282.22          | 90.01     | 65.82              | 491.88             | -137.73          | 87.62 S           | 786.18 E     | 6,789,242.59 N  | 573,279.23 E | 773.26               | 4.06                |
| 1,291.43          | 89.77     | 65.54              | 491.90             | -137.71          | 83.82 S           | 794.58 E     | 6,789,246.39 N  | 573,287.62 E | 781.99               | 1.19                |
| 1,300.61          | 89.79     | 65.15              | 491.94             | -137.67          | 79.99 S           | 802.92 E     | 6,789,250.22 N  | 573,295.96 E | 790.68               | 1.27                |
| 1,309.48          | 90.26     | 64.86              | 491.93             | -137.68          | 76.25 S           | 810.96 E     | 6,789,253.96 N  | 573,304.00 E | 799.06               | 1.87                |
| 1,318.75          | 89.99     | 65.47              | 491.91             | -137.70          | 72.35 S           | 819.37 E     | 6,789,257.86 N  | 573,312.41 E | 807.82               | 2.14                |
| 1,327.67          | 90.33     | 64.33              | 491.89             | -137.72          | 68.57 S           | 827.45 E     | 6,789,261.64 N  | 573,320.49 E | 816.24               | 4.00                |
| 1,337.31          | 89.92     | 64.12              | 491.87             | -137.74          | 64.38 S           | 836.13 E     | 6,789,265.83 N  | 573,329.17 E | 825.30               | 1.44                |
| 1,346.04          | 89.73     | 64.49              | 491.89             | -137.72          | 60.59 S           | 844.00 E     | 6,789,269.62 N  | 573,337.04 E | 833.51               | 1.42                |
| 1,355.95          | 90.27     | 65.52              | 491.89             | -137.72          | 56.40 S           | 852.98 E     | 6,789,273.81 N  | 573,346.02 E | 842.87               | 3.52                |
| 1,364.27          | 89.66     | 65.90              | 491.90             | -137.71          | 52.98 S           | 860.56 E     | 6,789,277.23 N  | 573,353.60 E | 850.76               | 2.60                |
| 1,373.76          | 89.66     | 64.69              | 491.95             | -137.66          | 49.01 S           | 869.18 E     | 6,789,281.20 N  | 573,362.22 E | 859.74               | 3.83                |
| 1,382.74          | 89.58     | 65.37              | 492.01             | -137.60          | 45.22 S           | 877.32 E     | 6,789,284.99 N  | 573,370.36 E | 868.22               | 2.28                |
| 1,392.49          | 89.75     | 65.58              | 492.07             | -137.54          | 41.18 S           | 886.19 E     | 6,789,289.03 N  | 573,379.23 E | 877.46               | 0.84                |
| 1,401.52          | 89.40     | 64.07              | 492.14             | -137.47          | 37.34 S           | 894.37 E     | 6,789,292.87 N  | 573,387.41 E | 885.98               | 5.15                |
| 1,410.19          | 90.14     | 65.59              | 492.17             | -137.44          | 33.65 S           | 902.21 E     | 6,789,296.56 N  | 573,395.25 E | 894.16               | 5.84                |



**End of Well Report for AA Pad, AA16**

| Survey Data      |           |                    |                    |                  |                   |              |                 |              |                      |                     |
|------------------|-----------|--------------------|--------------------|------------------|-------------------|--------------|-----------------|--------------|----------------------|---------------------|
| Survey Depth (m) | Incl. (°) | (Grid) Azimuth (°) | Vertical Depth (m) | Subsea Depth (m) | Local Coordinates |              | Map Coordinates |              | Vertical Section (m) | Dogleg Rate (°/30m) |
|                  |           |                    |                    |                  | Northings (m)     | Eastings (m) | Northings (m)   | Eastings (m) |                      |                     |
| 1,419.74         | 90.24     | 64.97              | 492.14             | -137.47          | 29.65 S           | 910.89 E     | 6,789,300.56 N  | 573,403.93 E | 903.19               | 1.98                |
| 1,428.48         | 89.68     | 64.41              | 492.15             | -137.46          | 25.92 S           | 918.79 E     | 6,789,304.29 N  | 573,411.83 E | 911.43               | 2.71                |
| 1,437.46         | 90.10     | 65.20              | 492.16             | -137.45          | 22.10 S           | 926.91 E     | 6,789,308.11 N  | 573,419.95 E | 919.90               | 3.00                |
| 1,446.55         | 89.81     | 65.82              | 492.17             | -137.44          | 18.33 S           | 935.19 E     | 6,789,311.88 N  | 573,428.23 E | 928.51               | 2.25                |
| 1,455.99         | 90.21     | 65.89              | 492.17             | -137.44          | 14.47 S           | 943.80 E     | 6,789,315.74 N  | 573,436.84 E | 937.47               | 1.31                |
| 1,465.61         | 90.14     | 65.31              | 492.14             | -137.47          | 10.49 S           | 952.56 E     | 6,789,319.72 N  | 573,445.60 E | 946.59               | 1.83                |
| 1,474.27         | 89.84     | 64.03              | 492.14             | -137.47          | 6.79 S            | 960.39 E     | 6,789,323.42 N  | 573,453.43 E | 954.75               | 4.55                |
| 1,483.36         | 89.48     | 64.82              | 492.20             | -137.41          | 2.86 S            | 968.59 E     | 6,789,327.35 N  | 573,461.63 E | 963.31               | 2.88                |
| 1,492.75         | 89.81     | 65.43              | 492.25             | -137.36          | 1.09 N            | 977.11 E     | 6,789,331.30 N  | 573,470.15 E | 972.18               | 2.21                |
| 1,501.67         | 89.74     | 63.52              | 492.29             | -137.32          | 4.93 N            | 985.15 E     | 6,789,335.14 N  | 573,478.20 E | 980.58               | 6.43                |
| 1,510.91         | 90.11     | 65.41              | 492.30             | -137.31          | 8.91 N            | 993.49 E     | 6,789,339.12 N  | 573,486.53 E | 989.28               | 6.25                |
| 1,519.76         | 89.71     | 63.65              | 492.31             | -137.30          | 12.72 N           | 1,001.48 E   | 6,789,342.93 N  | 573,494.52 E | 997.61               | 6.12                |
| 1,529.35         | 90.20     | 64.09              | 492.32             | -137.29          | 16.94 N           | 1,010.09 E   | 6,789,347.15 N  | 573,503.13 E | 1,006.61             | 2.05                |
| 1,538.23         | 89.55     | 64.67              | 492.34             | -137.27          | 20.78 N           | 1,018.10 E   | 6,789,350.99 N  | 573,511.14 E | 1,014.96             | 2.93                |
| 1,548.03         | 89.99     | 65.12              | 492.38             | -137.23          | 24.94 N           | 1,026.97 E   | 6,789,355.15 N  | 573,520.01 E | 1,024.21             | 1.93                |
| 1,556.91         | 90.36     | 63.58              | 492.35             | -137.26          | 28.79 N           | 1,034.97 E   | 6,789,359.00 N  | 573,528.02 E | 1,032.56             | 5.33                |
| 1,566.22         | 89.64     | 63.61              | 492.35             | -137.26          | 32.93 N           | 1,043.31 E   | 6,789,363.14 N  | 573,536.35 E | 1,041.28             | 2.30                |
| 1,575.55         | 90.34     | 64.63              | 492.35             | -137.26          | 37.00 N           | 1,051.71 E   | 6,789,367.21 N  | 573,544.75 E | 1,050.04             | 3.97                |
| 1,584.10         | 89.51     | 64.13              | 492.37             | -137.24          | 40.70 N           | 1,059.42 E   | 6,789,370.91 N  | 573,552.46 E | 1,058.09             | 3.39                |
| 1,593.46         | 90.38     | 64.33              | 492.37             | -137.24          | 44.77 N           | 1,067.85 E   | 6,789,374.98 N  | 573,560.89 E | 1,066.88             | 2.86                |
| 1,602.15         | 90.03     | 64.52              | 492.34             | -137.27          | 48.52 N           | 1,075.68 E   | 6,789,378.73 N  | 573,568.72 E | 1,075.06             | 1.39                |
| 1,611.85         | 90.00     | 64.97              | 492.34             | -137.27          | 52.66 N           | 1,084.46 E   | 6,789,382.87 N  | 573,577.50 E | 1,084.21             | 1.39                |
| 1,620.78         | 90.30     | 64.40              | 492.32             | -137.29          | 56.47 N           | 1,092.53 E   | 6,789,386.68 N  | 573,585.57 E | 1,092.63             | 2.16                |
| 1,630.48         | 89.98     | 64.15              | 492.29             | -137.32          | 60.68 N           | 1,101.27 E   | 6,789,390.89 N  | 573,594.31 E | 1,101.75             | 1.29                |
| 1,638.78         | 89.65     | 63.65              | 492.32             | -137.29          | 64.34 N           | 1,108.72 E   | 6,789,394.55 N  | 573,601.76 E | 1,109.53             | 2.16                |

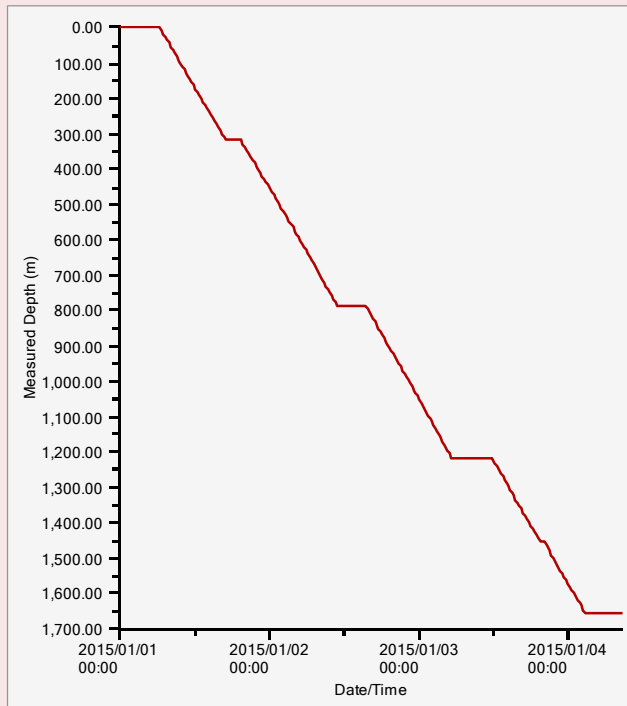
**Discussion**

**MWD Run #2** - Drilled ahead rotating until we could get signal. Tried various parameters with the pump rate; WOB and rotary speed to try and get the rop to improve. ROP would mostly stay at 4-6m/hr, despite the different parameters. When sliding it was difficult due to stick-slip, even when oscillating the pipe 1.5-3.5 turns. Would take 30Dan over string weight to pull out of slide due to hang ups. Hole drag was still high; 20Dan over going up; and 12-16Dan going down, with only 45m of new hole out of casing. Decided to pooh to pick up a Ratler agitator a 7/8 3.8stg motor and a different PDC. Motor drained fine. Washed out with 2 cubes fresh water. No sign of bearing wear or axial play. Good to re-run on later date.

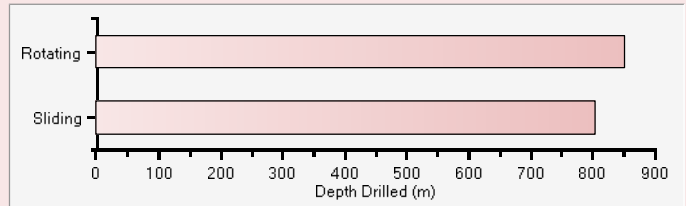
**MWD Run #3** - Difficult to slide due to stick-slipping. Motor would get hung up enough that it would take 110-112 Dan to pull out. At times used the Can-rig Rocket; oscillating 3.5 turns, left and right but the string would still get hung up. With only 45 meters of open hole drilled below casing, the hole drag and low ROP is very unusual with a PDC. Drained motor, washed out with water 2 cubes and laid down. Re-runable.

**End of Well Report for AA Pad, AA16**

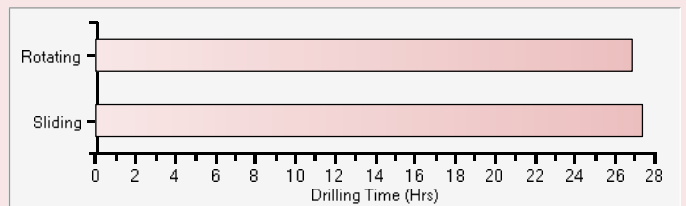
**Time vs Depth**



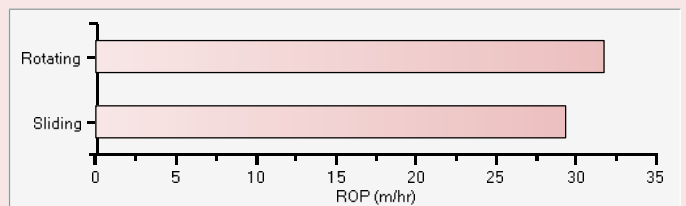
**Depth Drilled**



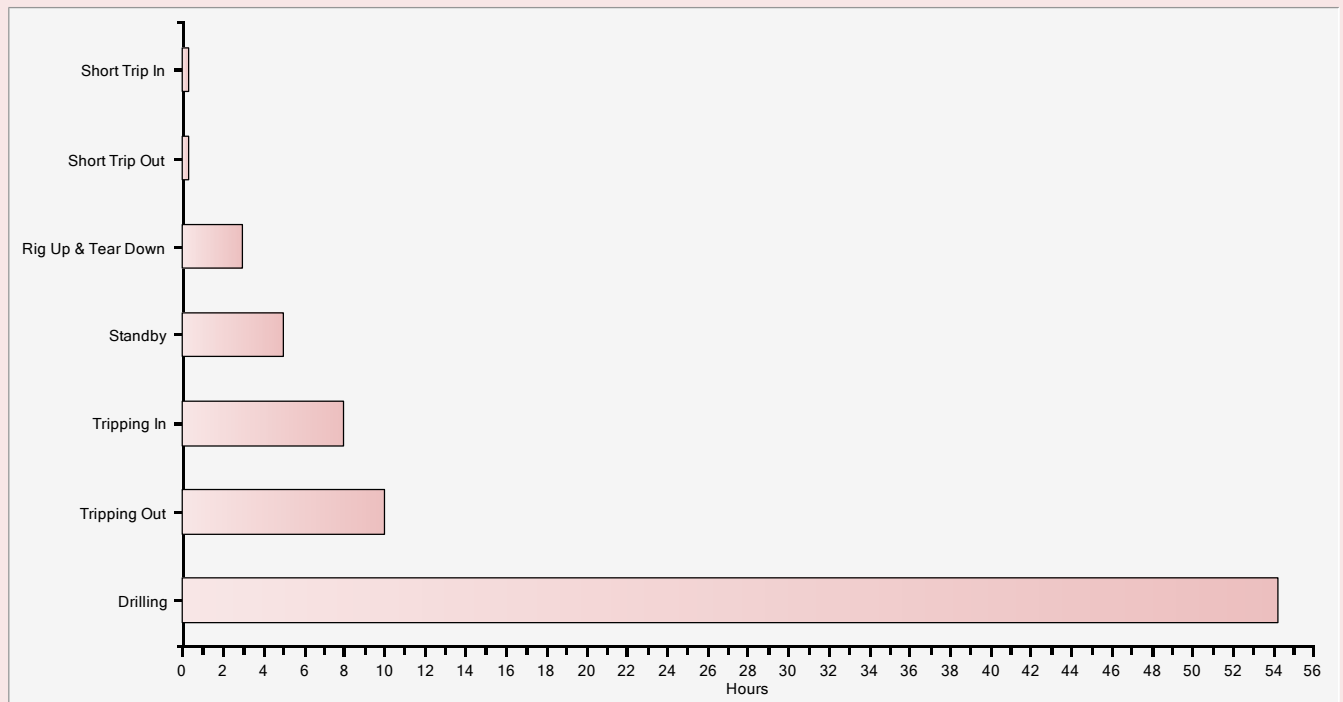
**Drilling Time**



**Average Rate of Penetration**



**Activity**



---

**End of Well Report for AA Pad, AA16**

---

**Disclaimer Notice**

True North Directional Services Inc. makes no warranty of any kind with respect to the subject matter included herein or the completeness or accuracy of this document.

True North Directional Services Inc. are not responsible for any actions (or lack thereof) taken as a result of relying on or in any way using information contained in this document and in no event shall be liable for any damages resulting from reliance on or use of this information.