



**Anglian Oil Company Ltd.
Northern Lights
AA Pad
AA16, Slot #09
MWD Run #4**

**Job No. AB-CD-12345678
Survey Date: 11 January 2013**

True North Directional Services Inc. Anticollision Report

18 August 2015

Minimum Distance Proximity Scan (Highside Reference)

Scan Range: 0.00m to 1,638.78m Measured Depth
Scan Radius is 500.00m. Clearance Factor cutoff is Unlimited.



True North
Directional Services Inc.

Minimum Distance Proximity Scan (Highside Reference)
Reference Survey: AA Pad, AA16, MWD Run #4 (and parent profiles)
Scan Range: 0.00m to 1,638.78m Measured Depth
Scan Radius is 500.00m. Clearance Factor cutoff is Unlimited.

| Comparison Structure, Well, Profile | Reference Well | | | Comparison Well | | | Separation (Ref. > Comp.) | | | Clearance Factor |
|-------------------------------------|--------------------|--------------------|----------------------|--------------------|--------------------|----------------------|---------------------------|------------------------|-----------------------------|------------------|
| | Measured Depth (m) | Vertical Depth (m) | Ellipse Major Axis/2 | Measured Depth (m) | Vertical Depth (m) | Ellipse Major Axis/2 | Between Centres (m) | Between Ellipsoids (m) | Relative HighSide Direction | |
| AA01, Run #1 | 1,638.78 | 492.32 | 54.01 | 1,403.99 | 486.79 | 45.76 | 552.98 | 459.04 | -89.422 | 5.89 |
| AA02, Gyro Survey Data | 304.09 | 303.53 | 2.84 | 240.04 | 240.02 | 1.04 | 92.56 | 84.47 | -122.120 | 11.45 |
| AA02, MWD Run #1 | 180.00 | 180.00 | 1.84 | 240.04 | 240.02 | 1.04 | 86.66 | 79.23 | 175.912 | 11.66 |
| AA02, MWD Run #2 | 1,638.78 | 492.32 | 54.01 | 1,401.17 | 488.23 | 39.88 | 475.41 | 387.16 | -89.497 | 5.39 |
| AA02, MWD Run #3 | 1,638.78 | 492.32 | 54.01 | 1,406.82 | 488.30 | 39.99 | 475.45 | 386.83 | -89.501 | 5.36 |
| AA02, MWD Run #4 | 1,638.78 | 492.32 | 54.01 | 1,543.28 | 488.51 | 42.30 | 496.99 | 404.44 | -89.421 | 5.37 |
| AA03, As Drilled Surveys | 1,638.78 | 492.32 | 54.01 | 1,486.64 | 502.22 | 47.54 | 636.39 | 541.68 | -90.881 | 6.72 |
| AA04, As Drilled Surveys | 1,638.78 | 492.32 | 54.01 | 1,511.77 | 488.07 | 52.19 | 157.21 | 66.34 | -88.441 | 1.73 |
| AA05, As Drilled Surveys | 1,638.78 | 492.32 | 54.01 | 1,521.56 | 501.38 | 53.58 | 236.99 | 138.80 | -92.176 | 2.41 |
| AA06, As Drilled Surveys | 323.52 | 322.11 | 3.32 | 324.76 | 321.68 | 4.08 | 2.21 | 14% | -49.676 | 0.38 |
| AA07, As Drilled Surveys | 1,638.78 | 492.32 | 54.01 | 1,670.72 | 500.45 | 55.78 | 8.73 | 40% | 158.689 | 0.01 |
| AA08, As Drilled Surveys | 1,638.78 | 492.32 | 54.01 | 1,452.44 | 501.62 | 50.09 | 474.64 | 377.63 | -91.116 | 4.89 |
| AA09, As Drilled Surveys | 1,638.78 | 492.32 | 54.01 | 1,428.97 | 486.84 | 45.35 | 637.47 | 545.12 | -89.501 | 6.90 |
| AA10, As Drilled Surveys | 930.00 | 491.30 | 27.38 | 748.66 | 502.13 | 18.53 | 398.05 | 365.36 | -91.551 | 12.18 |
| AA10, Sidetrack Surveys | 1,638.78 | 492.32 | 54.01 | 1,445.92 | 500.36 | 50.90 | 396.44 | 299.75 | -91.164 | 4.10 |
| AA11, As Drilled Surveys | 1,638.78 | 492.32 | 54.01 | 1,615.01 | 500.67 | 55.13 | 75.67 | 13.41 | -96.326 | 1.22 |
| AA12, As Drilled Surveys | 1,638.78 | 492.32 | 54.01 | 1,454.58 | 501.43 | 48.62 | 550.58 | 454.96 | -90.943 | 5.76 |
| AA13, SAGD Producer | 1,638.78 | 492.32 | 54.01 | 1,479.73 | 501.27 | 52.48 | 315.94 | 217.58 | -91.613 | 3.21 |
| AA14, SAGD Injector | 1,638.78 | 492.32 | 54.01 | 1,428.13 | 490.05 | 50.54 | 317.37 | 220.64 | -89.577 | 3.28 |
| AA15, As Drilled Surveys | 1,638.78 | 492.32 | 54.01 | 1,465.72 | 488.13 | 51.32 | 236.08 | 141.05 | -88.974 | 2.48 |
| AA17, As Drilled Surveys | 1,638.78 | 492.32 | 54.01 | 1,561.32 | 500.62 | 54.20 | 157.94 | 65.25 | -93.001 | 1.70 |
| AA18, As Drilled Surveys | 1,638.78 | 492.32 | 54.01 | 1,404.79 | 487.28 | 49.52 | 394.20 | 298.08 | -89.259 | 4.10 |

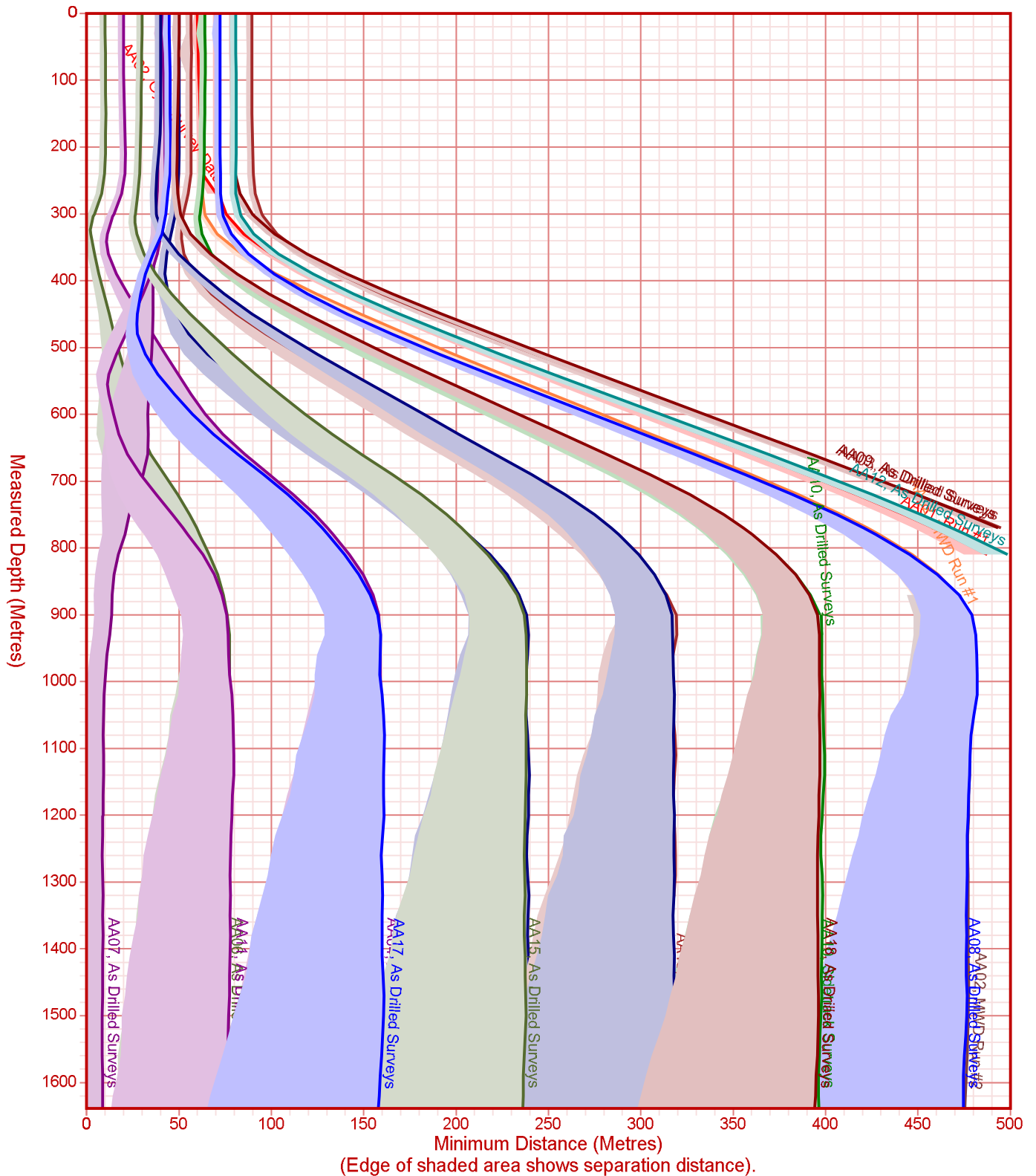
All station coordinates were calculated using the Minimum Curvature method.
 All data is in metres unless otherwise stated. Directions and coordinates are relative to Grid North.
 Vertical depths are relative to RKB. Northings and Eastings are relative to Well AA16.

Coordinate system is Universal Transverse Mercator, Zone 12 North.
 Central meridian is -111.000°. Grid convergence at surface is 1.184°.

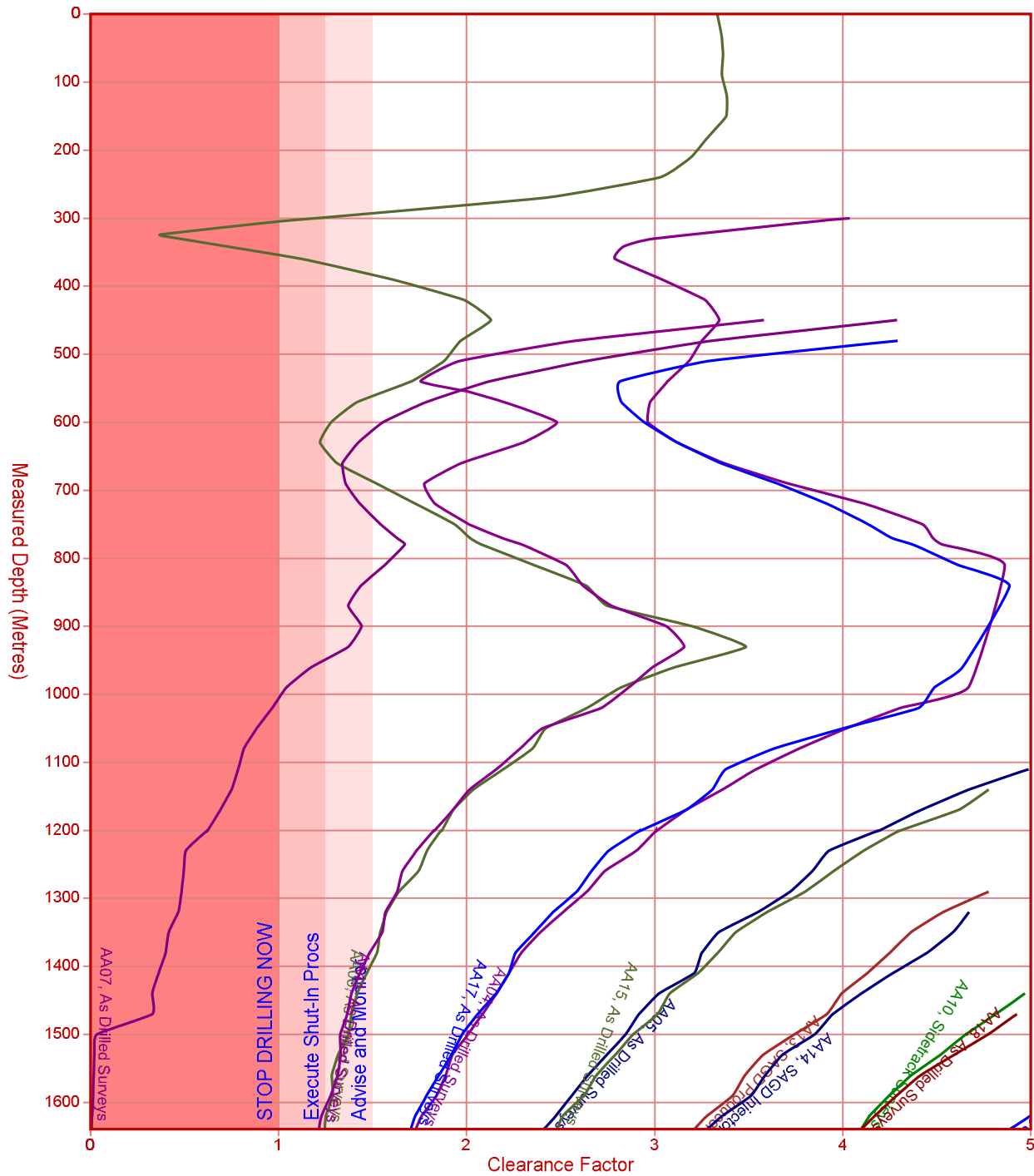
Profile Sections

Survey: MWD Run #1 from 0.00m to 304.09m
 Survey: MWD Run #2 from 304.09m to 770.02m
 Survey: MWD Run #3 from 770.02m to 1,201.65m
 Survey: MWD Run #4 from 1,201.65m to 1,638.78m

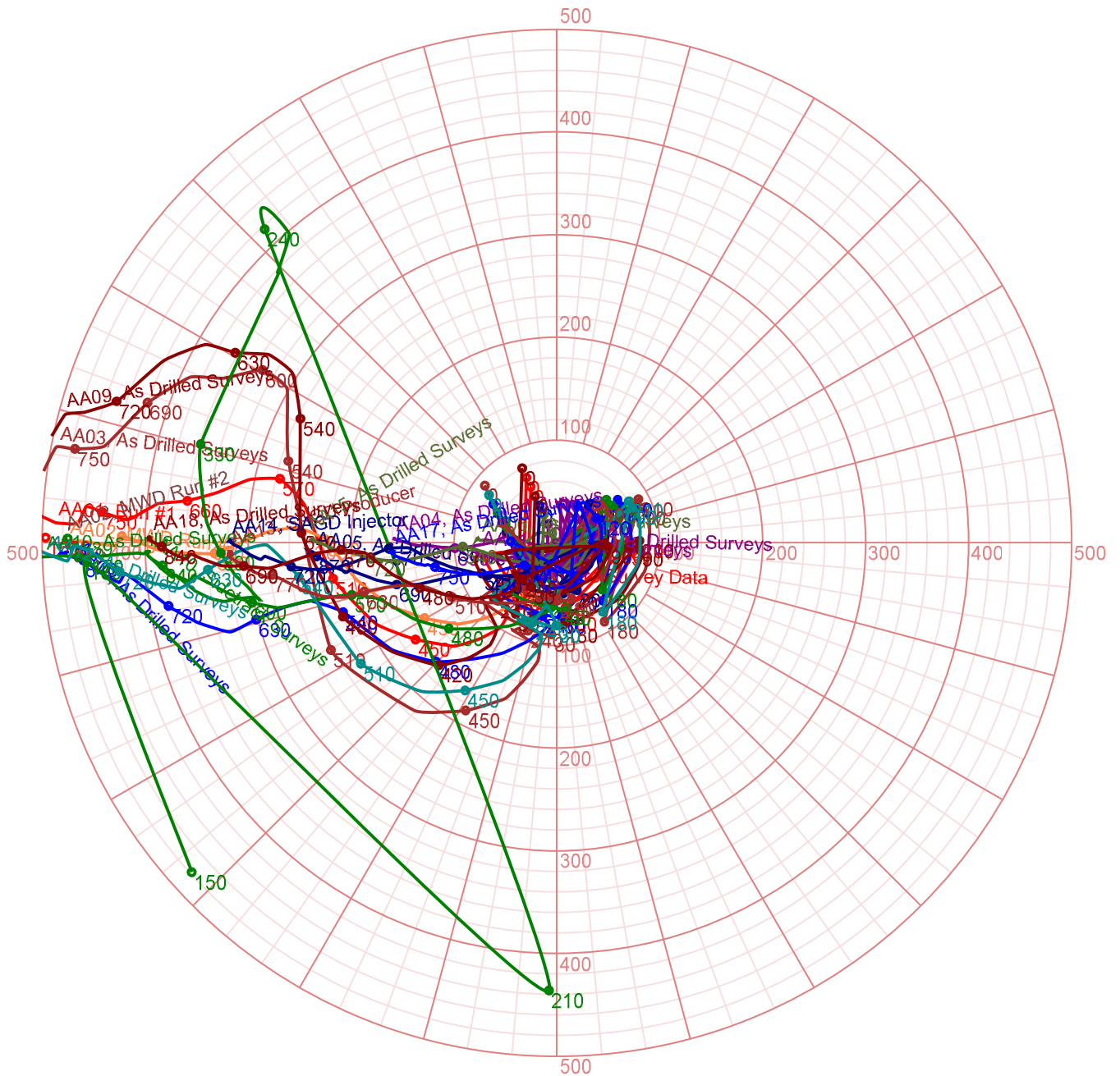
Minimum Distance Proximity Scan (Highside Reference)
Reference Survey: AA Pad, AA16, MWD Run #4 (and parent profiles)
Scan Range: 0.00m to 1,638.78m Measured Depth
Scan Radius is 500.00m. Clearance Factor cutoff is Unlimited.



Minimum Distance Proximity Scan (Highside Reference)
Reference Survey: AA Pad, AA16, MWD Run #4 (and parent profiles)
Scan Range: 0.00m to 1,638.78m Measured Depth
Scan Radius is 500.00m. Clearance Factor cutoff is Unlimited.



Minimum Distance Proximity Scan (Highside Reference)
Reference Survey: AA Pad, AA16, MWD Run #4 (and parent profiles)
Scan Range: 0.00m to 1,638.78m Measured Depth
Scan Radius is 500.00m. Clearance Factor cutoff is Unlimited.



Minimum Distance Proximity Scan (Highside Reference)
Reference Survey: AA Pad, AA16, MWD Run #4 (and parent profiles)
Scan Range: 0.00m to 1,638.78m Measured Depth
Scan Radius is 500.00m. Clearance Factor cutoff is Unlimited.

Survey Tool Program for AA16, MWD Run #4

| Measured Depth (m) | From Vertical Depth (m) | To Measured Depth (m) | Vertical Depth (m) | Survey Tool Description |
|--------------------|-------------------------|-----------------------|--------------------|---------------------------------|
| 0.00 | 0.00 | 240.00 | 240.00 | North Seeking Gyro MS (GYRO-NS) |
| 240.00 | 240.00 | 1,638.78 | 492.32 | MWD |

Disclaimer Notice

True North Directional Services Inc. makes no warranty of any kind with respect to the subject matter included herein or the completeness or accuracy of this document.

True North Directional Services Inc. are not responsible for any actions (or lack thereof) taken as a result of relying on or in any way using information contained in this document and in no event shall be liable for any damages resulting from reliance on or use of this information.