

KellyDown Tips

Periodic tips to help you use KellyDown more effectively

KellyDown and OneDrive

During Windows 10 setup, you will have seen a **Back up your files with OneDrive** screen telling you about the benefits of saving your files to OneDrive. (Before July 2019, the screen said, **Protect your files with OneDrive.**) If you clicked **Next**, you set up **OneDrive** as your default save location. If you clicked the **One save files to this PC** option, you set up your PC as the default save location.

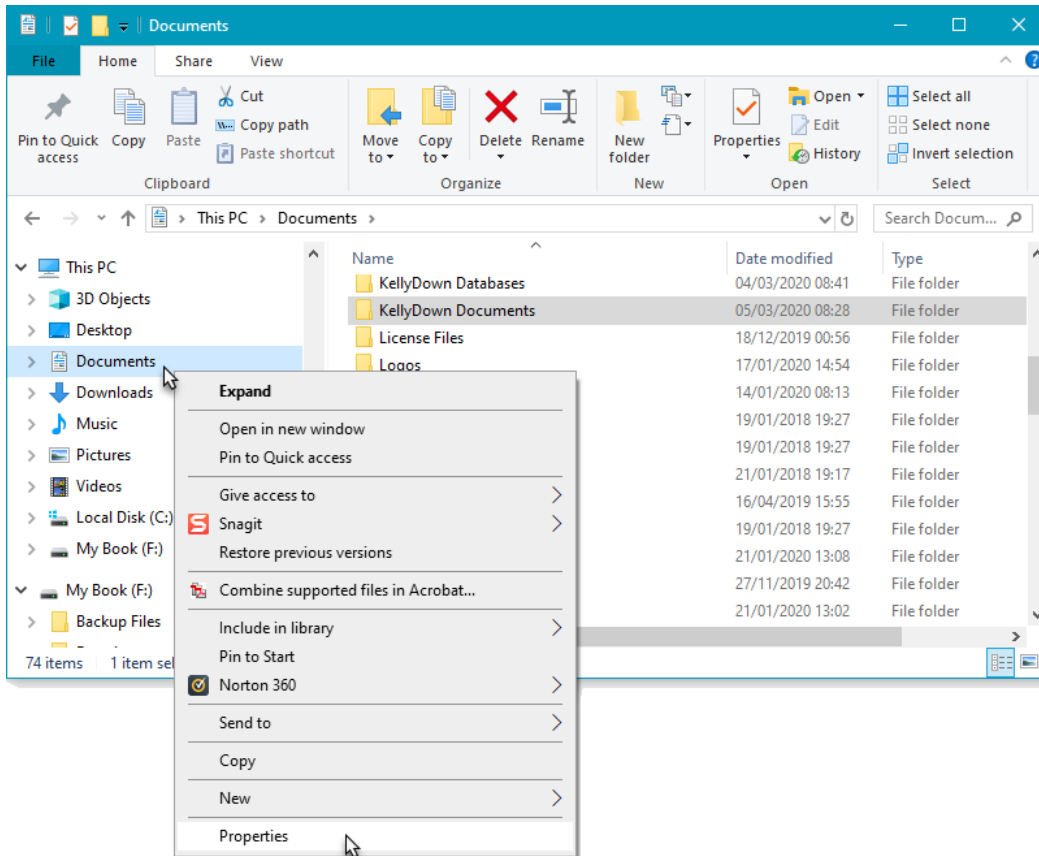
Whether you save by default to your computer or to OneDrive, all your files are available on your PC. The OneDrive app built in to Windows 10 synchronizes your files between OneDrive and your computer, so they're backed up, protected, and available on any device. You can use Files On-Demand to free up space or to make sure files or folders are always available on your device, even when you're offline.

While it is always a good idea to regularly back up your files, there are certain files, including the KellyDown database files that are not suitable for use with OneDrive. This is because these files are continually accessed by the application and each time they are created, deleted or updated, they are backed up to the OneDrive cloud. For example, to speed up execution, KellyDown creates several temporary files when performing an anti-collision scan. Uploading these files to the OneDrive cloud simply consumes bandwidth with no benefit. The KellyDown database files themselves may be accessed quite frequently during operation and uploading the database to the OneDrive cloud seriously impacts the performance of the application and may even cause accessibility problems.

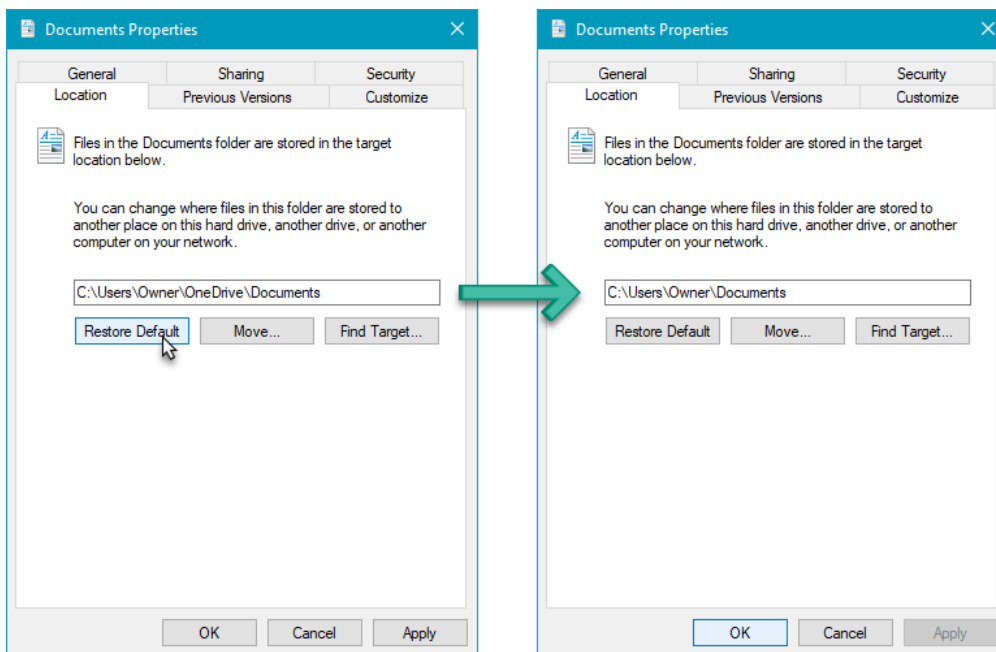
It is therefore recommended that you do not store the KellyDown database in the **OneDrive** folder on your computer. Instead, you should back up the KellyDown database to the **OneDrive** folder at regular intervals.

If you used the **Back up your files with OneDrive** option when you prepared your computer, you should change the location of the **Documents** folder so it is no longer under the **OneDrive** folder.

To do this, simply right click on your **Documents** folder and select **Properties**.

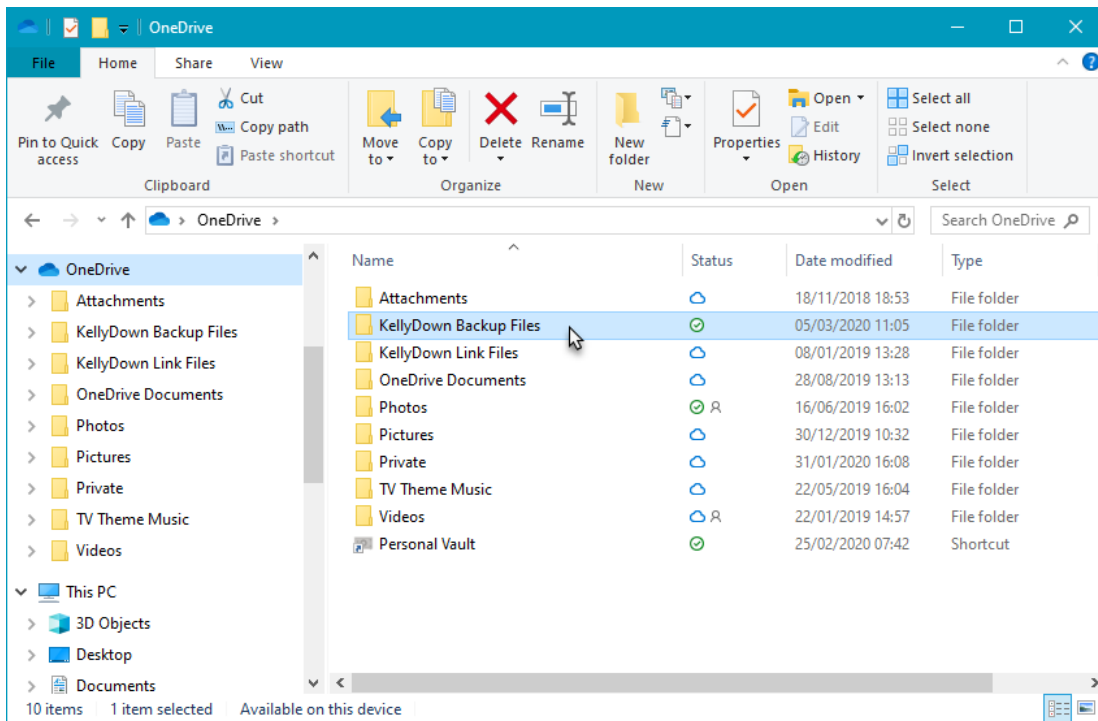


Click on the **Location** tab and click on the **Restore Default** button. This will move the **Documents** folder from the **OneDrive** folder to its default location (i.e. move the location of your **Documents** folder from `C:\Users\Owner\OneDrive\Documents` to `C:\Users\Owner\Documents`).

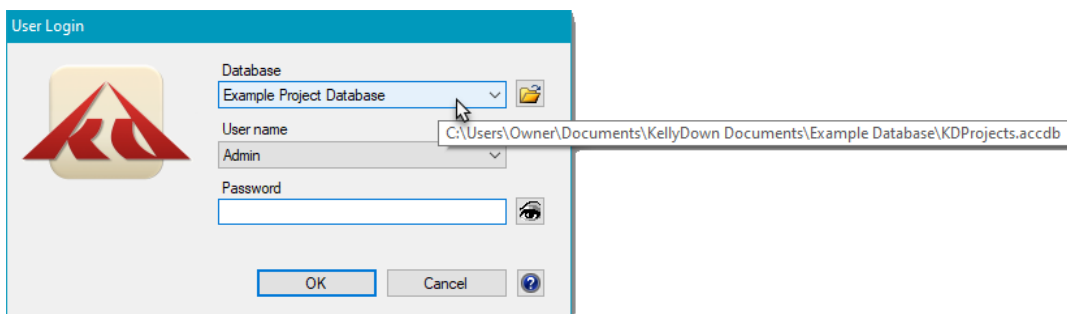


Click **OK** to save the changes.

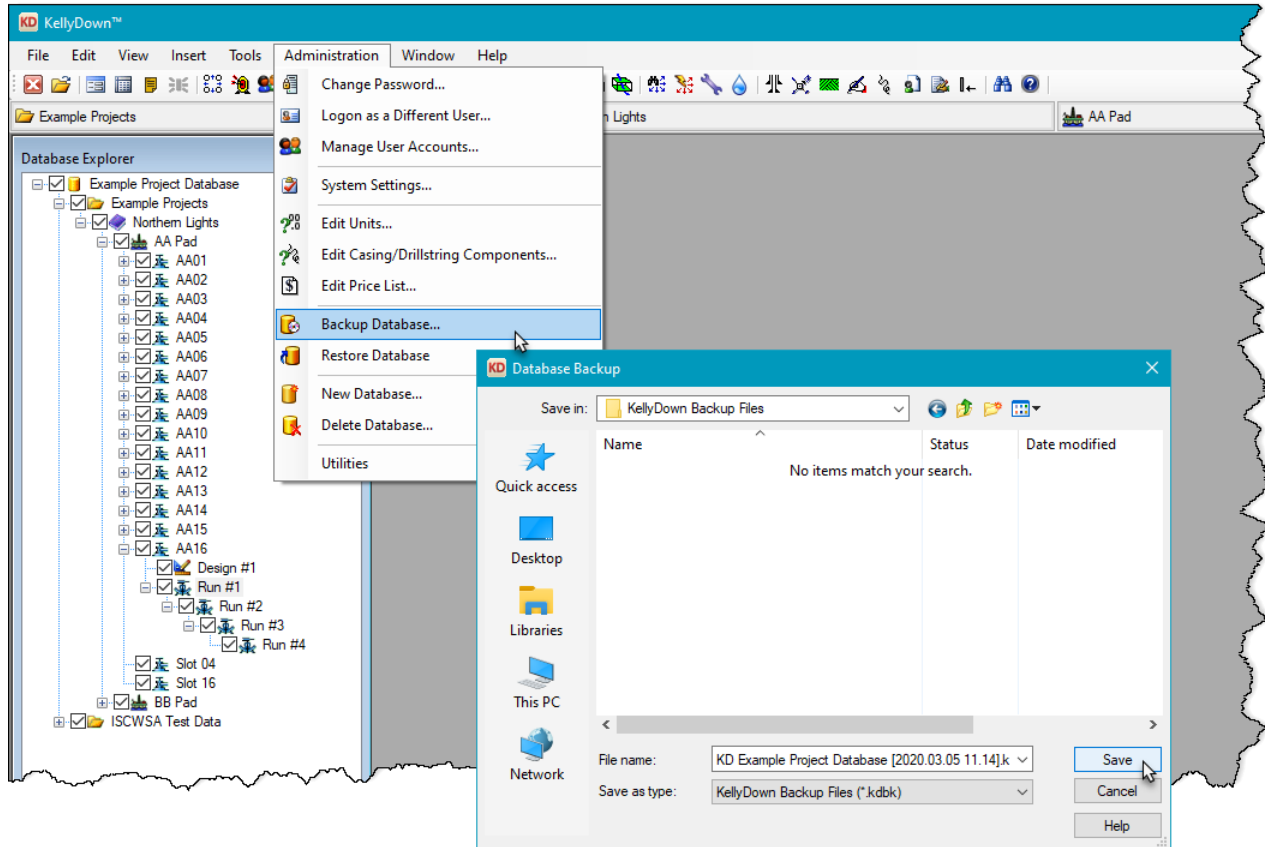
Next, create a new folder in the **OneDrive** folder named **KellyDown Backup Files**.



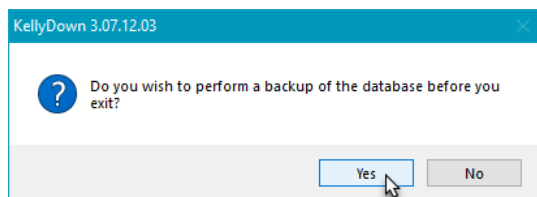
Now open KellyDown and if the current database isn't already selected, use the **Locate Database** button to locate it in the **Documents\ KellyDown Documents\Example Database** folder.



Once KellyDown opens, use **Administration, Backup Database** and locate the **KellyDown Backup Files** folder you created in the **OneDrive** folder. Then click on the **Save** button to save a backup of the current database to the **OneDrive** folder.



Whenever you exit KellyDown in the future and answer **Yes** when prompted to **perform a backup of the database**, a new backup is saved to the same location in the **OneDrive** folder and therefore also to the cloud.



If you have a question you would like answered in KellyDown Tips, reply to this email with your question.
 If you would like anything added to KellyDown to make it more useful or user friendly, reply to this email with your requests.
 You can download the latest version of KellyDown from www.kellydown.ca
 For other useful tips, please visit the KellyDown Tips and Tricks page at www.kellydown.ca/tips-and-tricks.
 If you would like to be removed from this email distribution list, reply with "Unsubscribe" in the subject line.
